



Distributor of CTS Electronic Components: Excellent Integrated System Limited

Datasheet of 4201-000LF - FILTER EMI 1500 PF PI TYPE

Contact us: sales@integrated-circuit.com Website: www.integrated-circuit.com

Excellent Integrated System Limited

Stocking Distributor

Click to view price, real time Inventory, Delivery & Lifecycle Information:

[CTS Electronic Components](#)

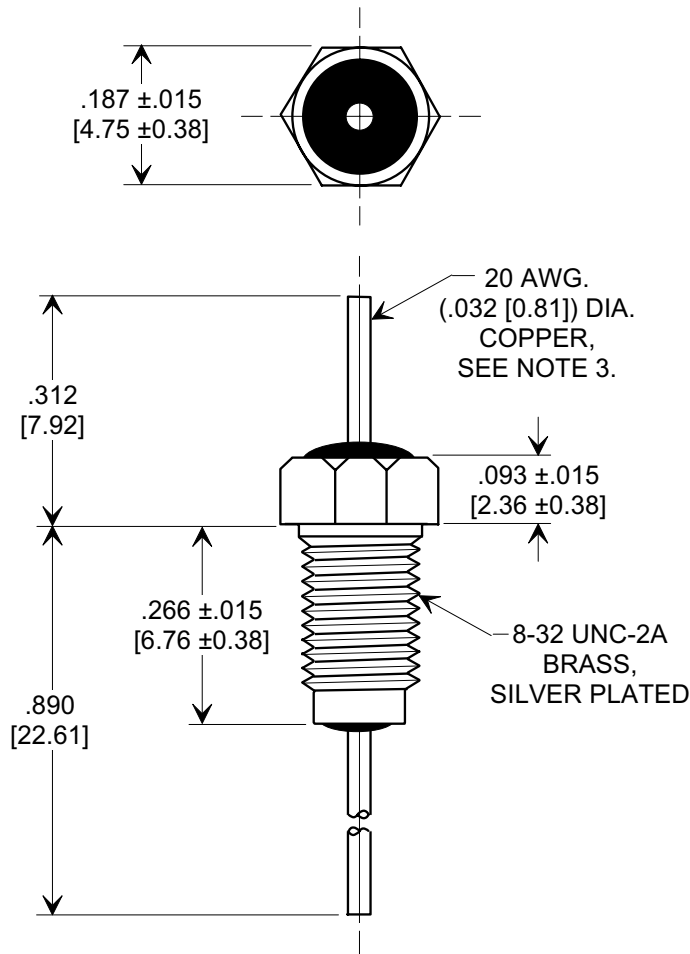
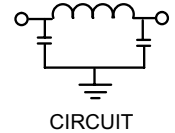
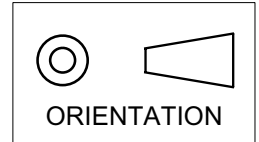
[4201-000LF](#)

For any questions, you can email us directly:

sales@integrated-circuit.com

Electrical Testing
 per Tusonix standard
 test plans and Mil-Std-202
 Test Methods.

MARKETING SALES DRAWING
DIMENSIONS IN INCHES - DO NOT SCALE THIS DRAWING
DIMENSIONS IN METRIC - []



NOTES:

- SUPPLIED WITH SILVER PLATED HEX NUT AND LOCKWASHER.
- TUSONIX STANDARD PART NUMBER: 4201-000.
 TUSONIX RoHS COMPLIANT PART NUMBER: 4201-000 LF.
 CUSTOMER MUST SPECIFY STANDARD OR RoHS PART NUMBER WHEN ORDERING.
- LEAD FINISH: STANDARD PART #: 60/40 SOLDER PLATED. RoHS PART #: SILVER PLATED.
- PART MARKING: TRADEMARK AND VARIATION NUMBER ON HEX FLATS.
 STANDARD PART: BLACK INK. RoHS PART: GREEN INK.

MIN. CAP. (pF)	WORKING VOLTAGE (VVdc)		CURRENT (Idc)	I.R. MIN.	DWV	MINIMUM NO LOAD INSERTION LOSS (dB) AT 25°C PER MIL-STD -220			
	85°C	125 °C				10 MHz	100 MHz	1 GHz	10 GHz
1500	200	100	10 A	10 G	400 VDC 2 SEC.	5	45	65	70

X-2015 Rev-0	REVISION RECORD								--TOLERANCES-- Unless Otherwise Specified	Title						
	0	1	2	3	4	5	6	7		BUSHING STYLE EMI FILTER						
	Original Release C.O.	.093 WAS .094. LE 12-9-83 WAS SK6644-030-S. L.E. 1-13-84	DIM'S & TOL'S REV'D. RELEASED. L.E. 1-8-85	CURRENT UNIT "A" ADDED. L.E. 8-20-85	2595	10 GHz WAS 60. E.C. 7-14-92	6774	RDN TO COMP FMT & ADDED METRIC. S.M. 01-23-02	20020123-1-01	DIM. .890 REMOVED TOL. S.M. 02-18-02	20020215-6-01	ADDED NOTES: S.M. 07-27-05	20050726-2-12	DECIMAL ± .031 [0.79]	Drawn S.M. 01-23-02	Scale 4X
	TUSONIX										Approved T.C. 01-23-02					
	TUCSON, ARIZONA										A	4201-000				