



Distributor of CTS Electronic Components: Excellent Integrated System Limited

Datasheet of 4201-001LF - FILTER EMI 1500 PF PI TYPE

Contact us: [sales@integrated-circuit.com](mailto:sales@integrated-circuit.com) Website: [www.integrated-circuit.com](http://www.integrated-circuit.com)

---

## Excellent Integrated System Limited

Stocking Distributor

Click to view price, real time Inventory, Delivery & Lifecycle Information:

[CTS Electronic Components](#)

[4201-001LF](#)

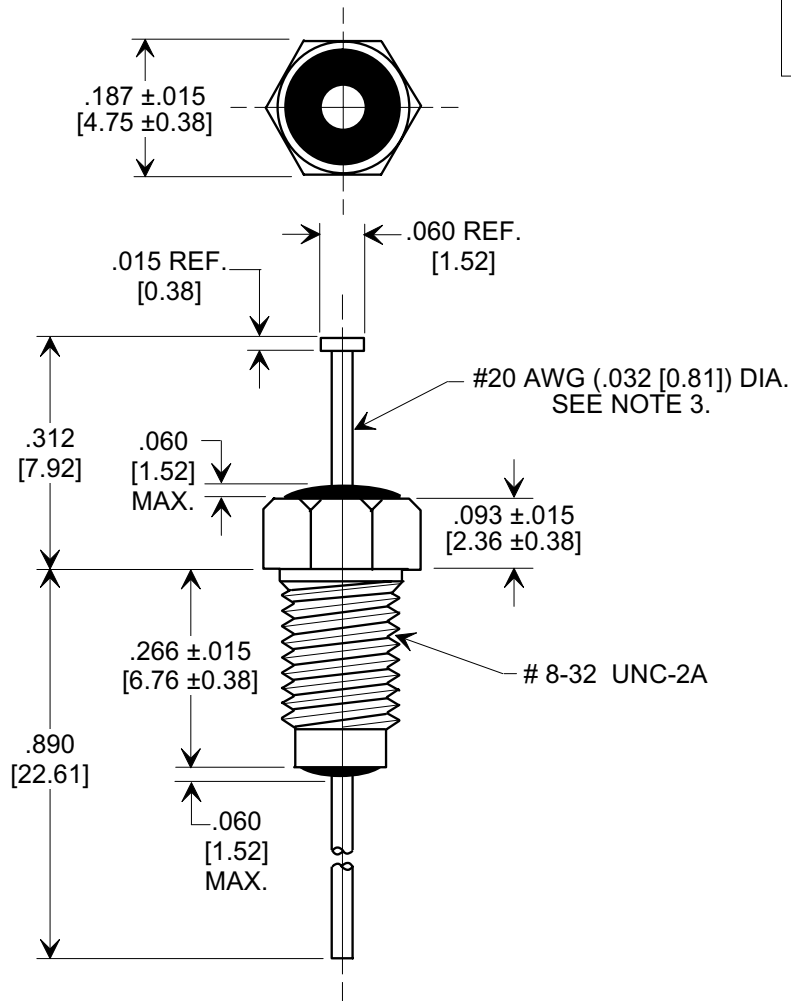
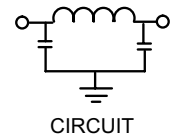
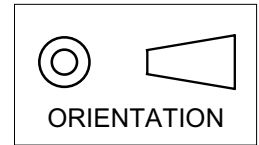
For any questions, you can email us directly:

[sales@integrated-circuit.com](mailto:sales@integrated-circuit.com)

**MARKETING SALES DRAWING**

**DIMENSIONS IN INCHES - DO NOT SCALE THIS DRAWING**  
**DIMENSIONS IN METRIC - [ ]**

Electrical Testing  
 per Tusonix standard  
 test plans and Mil-Std-202  
 Test Methods.



**NOTES:**

1. SUPPLIED WITH SILVER PLATED HEX NUT AND LOCKWASHER.
2. TUSONIX STANDARD PART NUMBER: 4201-001.  
 TUSONIX RoHS COMPLIANT PART NUMBER: 4201-001 LF.  
 CUSTOMER MUST SPECIFY STANDARD OR RoHS PART NUMBER WHEN ORDERING.
3. LEAD FINISH: STANDARD PART #: 60/40 SOLDER PLATED. RoHS PART #: SILVER PLATED.
4. PART MARKING: TRADEMARK AND VARIATION NUMBER ON HEX FLATS.  
 STANDARD PART: BLACK INK. RoHS PART: GREEN INK.

CAP. (pF)	WORKING VOLTAGE (VWdc)		CURRENT (Idc)	I.R. MIN. @ 100 VDC	D.W.V.	MINIMUM NO LOAD INSERTION LOSS (dB) AT 25°C PER MIL-STD -220			
	85°C	125 °C				10 MHz	100 MHz	1 GHz	10 GHz
1500	200	100	10 A	10 G	400 VDC	5	45	65	70

X-2015 Rev-0

<b>REVISION RECORD</b>	<b>0</b> Original Release C.O.	RDN TO COMP FMT & ADDED METRIC. S.M. 01-21-02	<b>6</b> DIM'S REV'D .015 REF. WAS .031 ± .010 & .060 REF. WAS .100 ± .015 & MIN. @ 100 VDC ADDED L.E. 04-16-03	<b>7</b> NOTES 2-4 ADDED. S.M. 04-27-05	<b>8</b>	<b>--TOLERANCES--</b> Unless Otherwise Specified		Title <b>BUSHING STYLE EMI FILTER</b>	
						DECIMAL ± .031 [0.79]	Drawn S.M. 01-21-02		Scale 4 X
						ANGLES ±	Approved T.C. 01-21-02		
						<b>TUSONIX</b> TUCSON, ARIZONA	<b>A</b>	<b>4201-001</b>	