



**Distributor of CTS Electronic Components: Excellent Integrated System Limited**

Datasheet of 4201-003LF - FILTER EMI 2000 PF PI TYPE

Contact us: [sales@integrated-circuit.com](mailto:sales@integrated-circuit.com) Website: [www.integrated-circuit.com](http://www.integrated-circuit.com)

---

## **Excellent Integrated System Limited**

Stocking Distributor

Click to view price, real time Inventory, Delivery & Lifecycle Information:

[CTS Electronic Components](#)

[4201-003LF](#)

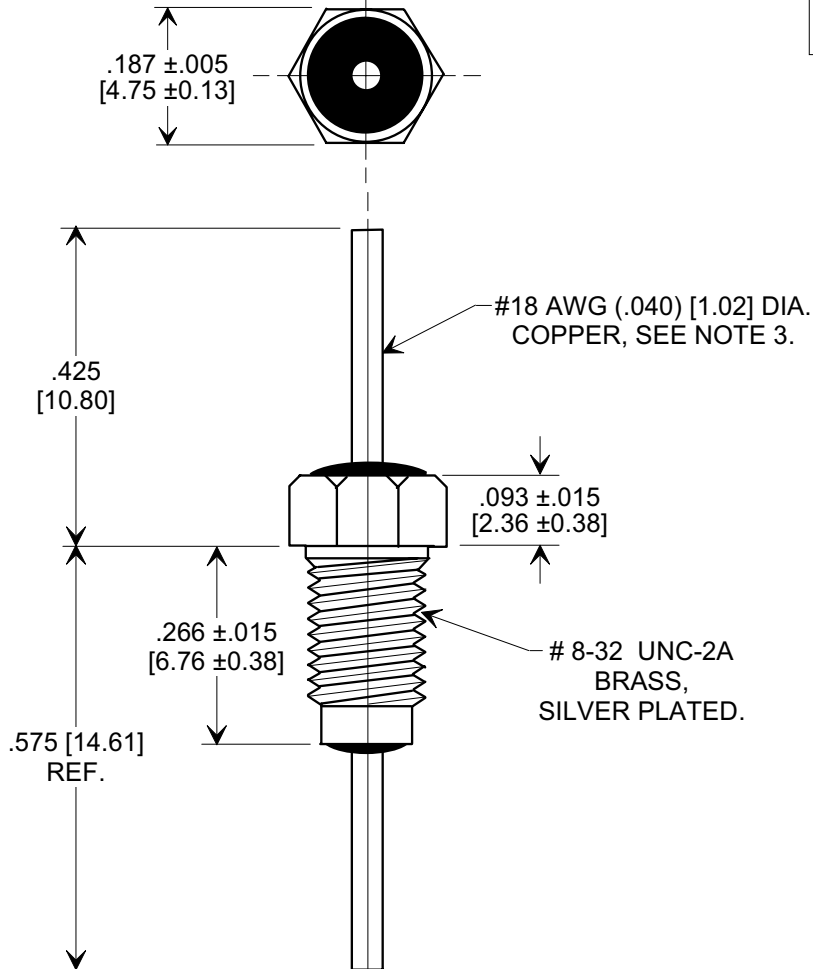
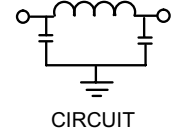
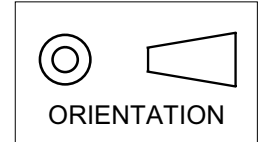
For any questions, you can email us directly:

[sales@integrated-circuit.com](mailto:sales@integrated-circuit.com)

**MARKETING SALES DRAWING**

**DIMENSIONS IN INCHES - DO NOT SCALE THIS DRAWING**  
**DIMENSIONS IN METRIC - [ ]**

Electrical Testing  
 per Tusonix standard  
 test plans and Mil-Std-202  
 Test Methods.



**NOTES:**

- SUPPLIED WITH SILVER PLATED HEX NUT AND LOCKWASHER.
- TUSONIX STANDARD PART NUMBER: 4201-003.  
 TUSONIX RoHS COMPLIANT PART NUMBER: 4201-003 LF.  
 CUSTOMER MUST SPECIFY STANDARD OR RoHS PART NUMBER WHEN ORDERING.
- LEAD FINISH: STANDARD PART #: 60/40 SOLDER PLATED. RoHS PART #: SILVER PLATED.
- PART MARKING: TRADEMARK AND VARIATION NUMBER ON HEX FLATS.  
 STANDARD PART: BLACK INK. RoHS PART: GREEN INK.

MIN. CAP. (pF)	WORKING VOLTAGE (VVdc)		CURRENT (Idc)	I.R.	DWV	MINIMUM NO LOAD INSERTION LOSS (dB) AT 25°C PER MIL-STD -220			
	85°C	125°C				10 MHz	100 MHz	1 GHz	10 GHz
2000	200	100	15 A	10 G	400 VDC 2 SEC.	5	38	63	70

X-2015 Rev-0

<b>REVISION RECORD</b>	0	Original Release C.O.	WAS SK6733-000-S. RELEASED. L.E. 8-14-85 <b>1760</b> RDN TO COMP FMT & ADDED METRIC. 01-23-02 <b>20020123-2-01</b> ADDED NOTES. S.M. 07-27-05 <b>20050726-2-13</b>	<b>--TOLERANCES--</b> Unless Otherwise Specified		Title <b>BUSHING STYLE EMI FILTER</b>		
				DECIMAL ± .031 [0.79]	Drawn S.M. 01-23-02		Scale 4 X	
				ANGLES ±	 <b>TUCSON, ARIZONA</b>		Approved T.C. 01-23-02	
							<b>A</b>	<b>4201-003</b>