



Distributor of CTS Electronic Components: Excellent Integrated System Limited

Datasheet of 4202-021LF - FILTER EMI 1500 PF PI TYPE

Contact us: sales@integrated-circuit.com Website: www.integrated-circuit.com

Excellent Integrated System Limited

Stocking Distributor

Click to view price, real time Inventory, Delivery & Lifecycle Information:

[CTS Electronic Components](#)

[4202-021LF](#)

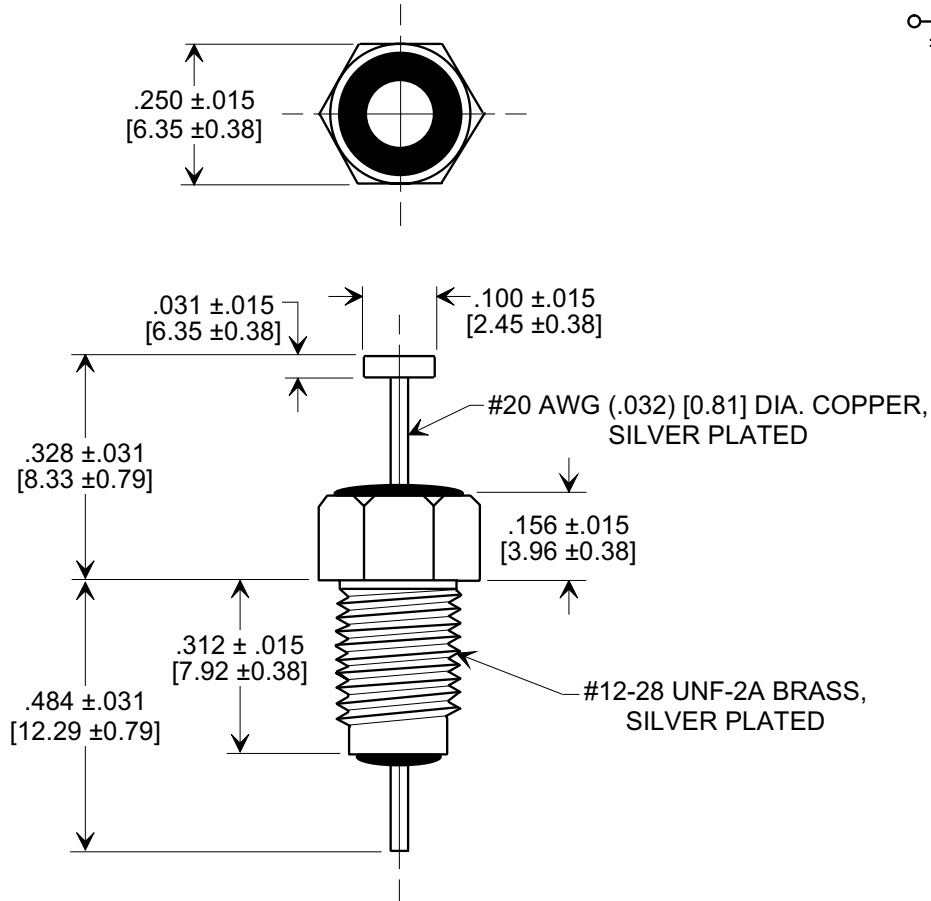
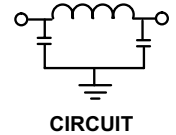
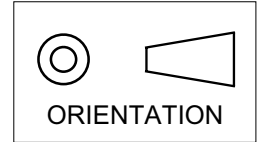
For any questions, you can email us directly:

sales@integrated-circuit.com

MARKETING SALES DRAWING

DIMENSIONS IN INCHES - DO NOT SCALE THIS DRAWING
DIMENSIONS IN METRIC - []

Electrical Testing
 per Tusonix standard
 test plans and Mil-Std-202
 Test Methods.



NOTES:

- SUPPLIED WITH SILVER PLATED HEX NUT AND LOCK WASHER.
- TUSONIX STANDARD PART NUMBER: 4202-021.
 TUSONIX RoHS COMPLIANT PART NUMBER: 4202-021 LF.
 CUSTOMER MUST SPECIFY STANDARD OR RoHS PART NUMBER WHEN ORDERING.
- PART MARKING: TRADEMARK AND VARIATION NUMBER ON HEX FLATS.
 STANDARD PART: BLACK INK. RoHS PART: GREEN INK.

MIN. CAP. (pF)	WORKING VOLTAGE (WVdc)		CURRENT (Idc)	DWV (VDC)	I.R. MIN. @ 100 VDC	MINIMUM NO LOAD INSERTION LOSS (dB) AT 25°C PER MIL-STD -220			
	85°C	125°C				10 MHz	100 MHz	1 GHz	10 GHz
1500	350	200	10 A	700	10 G	5	45	70	70

X-2015 Rev-0	REVISION RECORD		--TOLERANCES-- Unless Otherwise Specified	Title	
	Original Release	0		BUSHING STYLE EMI FILTER	
	C.O.	1617			
	CURRENT UNIT "A" ADDED. L.E. 8-20-85	1		Drawn	S.M. 02-12-02
2595 RDN TO COMP FMT & ADDED METRIC. S.M. 02-12-02	2	TUSONIX TUCSON, ARIZONA		Approved	T.C. 02-12-02
20020213-3-09 ADDED NOTES 2, 3 & REF. TO PLATING ON LEAD & BUSHING S.M. 05-18-05	3			A	4202-021
20050503-6-13					