



**Distributor of CTS Electronic Components: Excellent Integrated System Limited**

Datasheet of 4205-001LF - FILTER EMI 1500 PF PI TYPE

Contact us: [sales@integrated-circuit.com](mailto:sales@integrated-circuit.com) Website: [www.integrated-circuit.com](http://www.integrated-circuit.com)

---

## **Excellent Integrated System Limited**

Stocking Distributor

Click to view price, real time Inventory, Delivery & Lifecycle Information:

[CTS Electronic Components](#)

[4205-001LF](#)

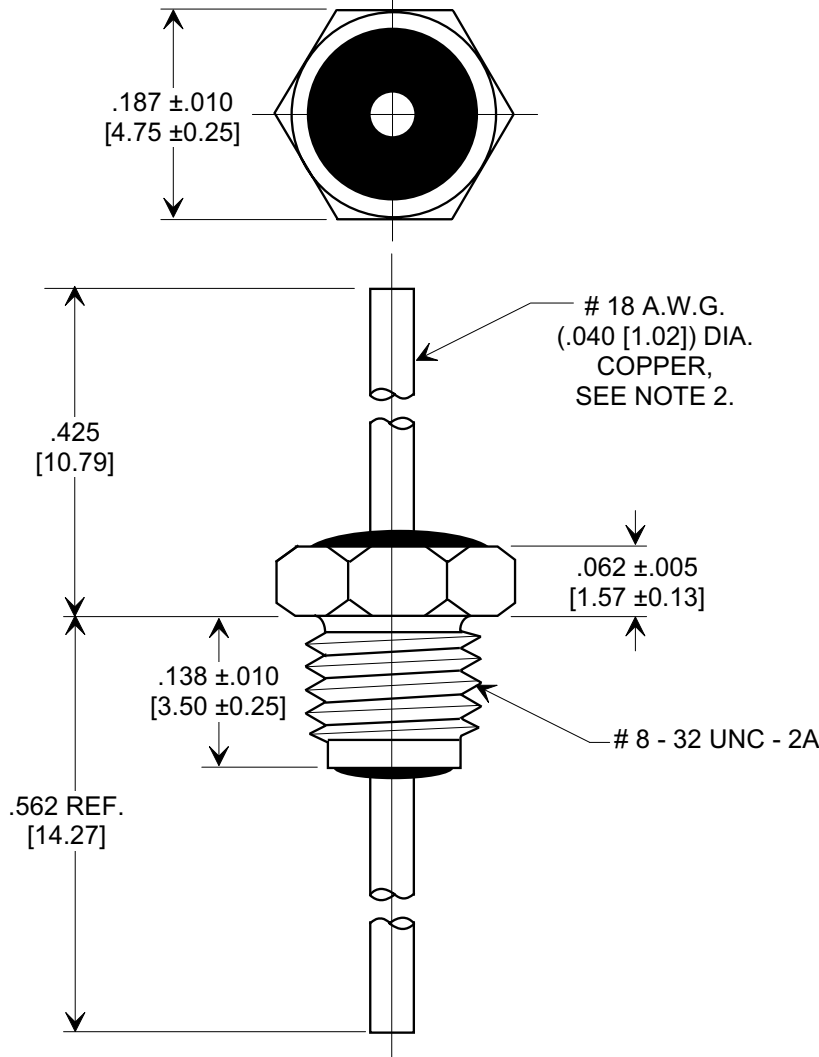
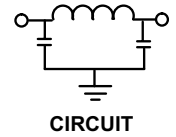
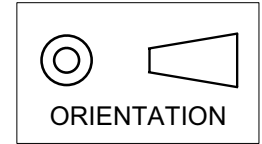
For any questions, you can email us directly:

[sales@integrated-circuit.com](mailto:sales@integrated-circuit.com)

**MARKETING SALES DRAWING**

**DIMENSIONS IN INCHES - DO NOT SCALE THIS DRAWING**  
**DIMENSIONS IN METRIC - [ ]**

Electrical Testing  
 per Tusonix standard  
 test plans and Mil-Std-202  
 Test Methods.



**NOTES:**

- TUSONIX STANDARD PART NUMBER: 4205.001.  
 TUSONIX RoHS COMPLIANT PART NUMBER: 4205.001 LF.  
 CUSTOMER MUST SPECIFY STANDARD OR RoHS PART NUMBER WHEN ORDERING.
- LEAD FINISH: STANDARD PART #: 60/40 SOLDER PLATED. RoHS PART #: SILVER PLATED.
- SILVER PLATED STEEL BUSHING.
- SILVER PLATED INTERNAL TOOTH LOCKWASHER AND #8-32 UNC-2B HEX NUT SUPPLIED.  
 MAX. MOUNTING TORQUE 5 LB. INCHES [ .565 N-m].
- PART MARKING: TRADEMARK AND VARIATION NUMBER ON HEX FLATS.  
 STANDARD PART: BLACK INK. RoHS PART: GREEN INK.

MIN. CAP. (pF)	WORKING VOLTAGE (VVdc)		CURRENT Idc	I.R. MIN. @ 100 (VDC)	DWV (VDC)	MINIMUM NO LOAD INSERTION LOSS (dB) AT 25°C PER MIL-STD-220			
	85° C	125° C				10 MHz	100 MHz	1 GHz	10 GHz
1500	250	125	15	10 G Ω	500	5	35	60	60

X-2015 Rev-0

<b>REVISION RECORD</b> Original Release C.O. <b>6600</b> REVISED & REDRAW TO COMP. FORMAT L.E. 02-01-00 <b>20000201-6-01</b> ADDED NOTES 1,2 & 5. NOTE 3 REVISED. S.M. 06-09-05 <b>20050607-1-02</b> ADDED IR & DWV. S.M. 11-30-05 <b>20051102-4-02</b>	--TOLERANCES-- Unless Otherwise Specified		Title <b>BUSHING STYLE EMI FILTER</b>		
	DECIMAL ± .031 [.79]		Drawn	L.E. 02-01-00	Scale 6 X
	ANGLES ±		Approved	T.C. 02-01-00	
	<b>TUSONIX</b> TUCSON, ARIZONA		<b>A</b>	<b>4205-001</b>	