



**Distributor of CTS Electronic Components: Excellent Integrated System Limited**

Datasheet of 4700-003MLF - FILTER EMI 2000 PF PI TYPE

Contact us: [sales@integrated-circuit.com](mailto:sales@integrated-circuit.com) Website: [www.integrated-circuit.com](http://www.integrated-circuit.com)

---

## **Excellent Integrated System Limited**

Stocking Distributor

Click to view price, real time Inventory, Delivery & Lifecycle Information:

[CTS Electronic Components](#)  
[4700-003MLF](#)

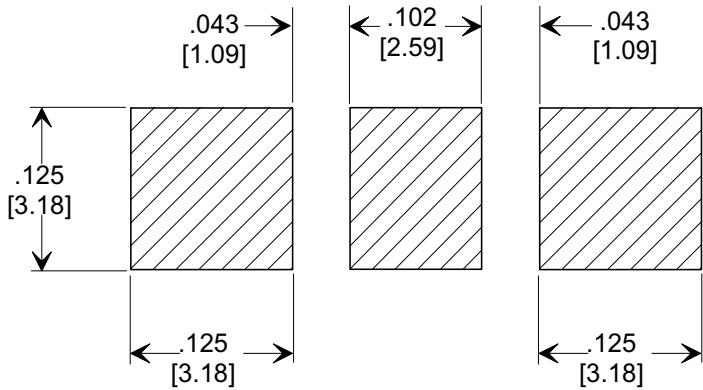
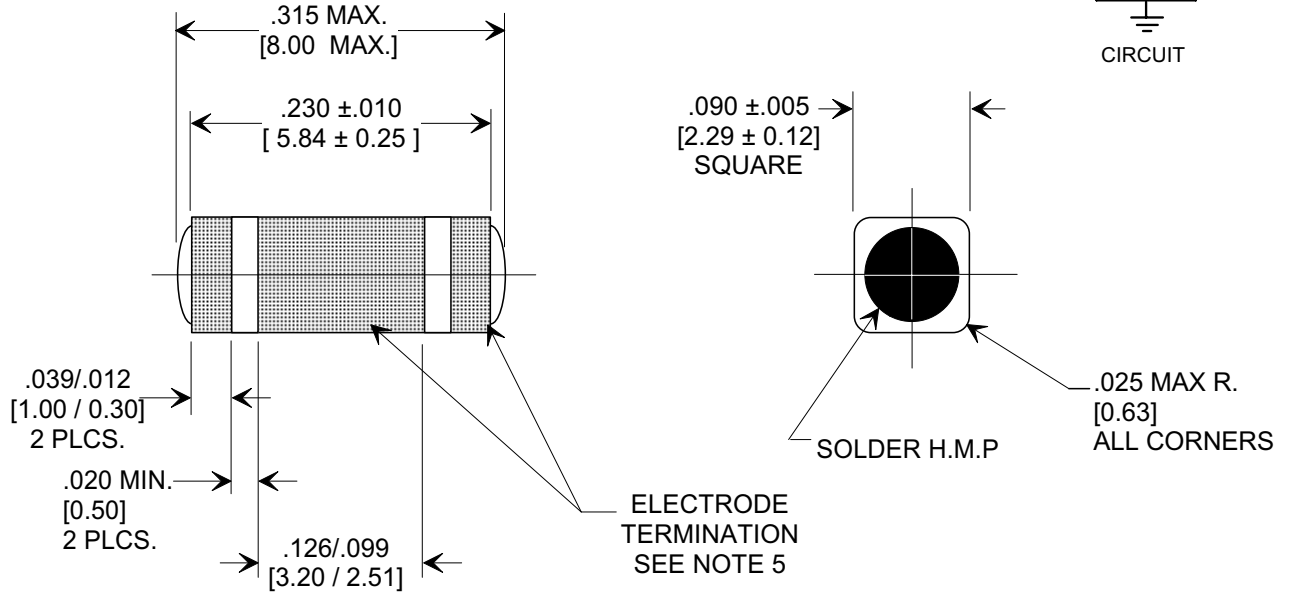
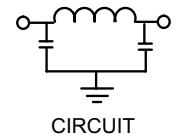
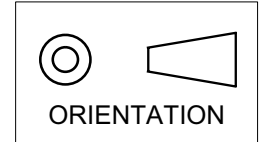
For any questions, you can email us directly:

[sales@integrated-circuit.com](mailto:sales@integrated-circuit.com)

**MARKETING SALES DRAWING**

**DIMENSIONS IN INCHES - DO NOT SCALE THIS DRAWING**  
**DIMENSIONS IN METRIC [ ]**

Electrical Testing  
 per Tusonix standard  
 test plans and Mil-Std-202  
 Test Methods.



1. INDUCTANCE TO BE 0.1 H MINIMUM.
2. PACKAGE: BULK OR BLISTER TAPE TO IEC-60286-3 TYPE II AND EIA-481-A.
3. TUSONIX STANDARD PART NUMBER: 4700-003. TUSONIX RoHS COMPLIANT PART NUMBER: 4700-003 LF. CUSTOMER MUST SPECIFY STANDARD OR RoHS PART NUMBER WHEN ORDERING.
4. PART MARKING: STANDARD PART: NO MARKING. RoHS PART: LABELED ON PACKAGING ONLY.
5. ELECTRODE TERMINATION: STANDARD 60/40 SOLDER; RoHS COMPLIANT - MATTE TIN.

CAP.	TOLERANCE	WVDC		TEST VOLTAGE	I.R.MIN. @ 100 (VDC.)	IDC	TYPICAL NO LOAD INSERTION LOSS dB AT 25°C PER MIL-STD-220		
		85°C	+125°C				10 MHZ	100 MHZ	1 GHZ
2000 pF	GMV	100	100	300 VDC	10 G	10 A	10	45	70

X-2015 Rev-0 REVISION RECORD Original Release C.O. <b>941020-1</b> ADDED DC COLUMN E.C. 10-26-94 <b>REISSUE 941020-1</b> DIM. .230 WAS .238 E.C. 11-16-94 <b>REISSUE 941020-1</b> REVISED DWG. ORIENTATION SYMBOL & I.R. MIN. @ 100 (VDC) ADDED S.M. 02-13-03 <b>20030213-1-12</b> REVISED DRAWING. S.M. 06-20-03 <b>20030619-2-01</b> ADDED NOTES 3,4 & 5. S.M. 06-10-05 <b>20050607-5-02</b>	0	1	2	3	4	5	--TOLERANCES-- Unless Otherwise Specified DECIMAL ± .005 [0.13] ANGLES ±	Title <b>SURFACE MOUNT SQUARE STYLE PI FILTER</b>		
								Drawn FG 9-9-94 Scale 7 X		
								<b>TUSONIX</b> TUCSON, ARIZONA	Approved NV 9-9-94	
								<b>A</b>	<b>4700-003</b>	