



Excellent Integrated System Limited

Stocking Distributor

Click to view price, real time Inventory, Delivery & Lifecycle Information:

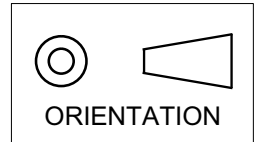
[CTS Electronic Components](#)
[M15733/43-0001](#)

For any questions, you can email us directly:
sales@integrated-circuit.com

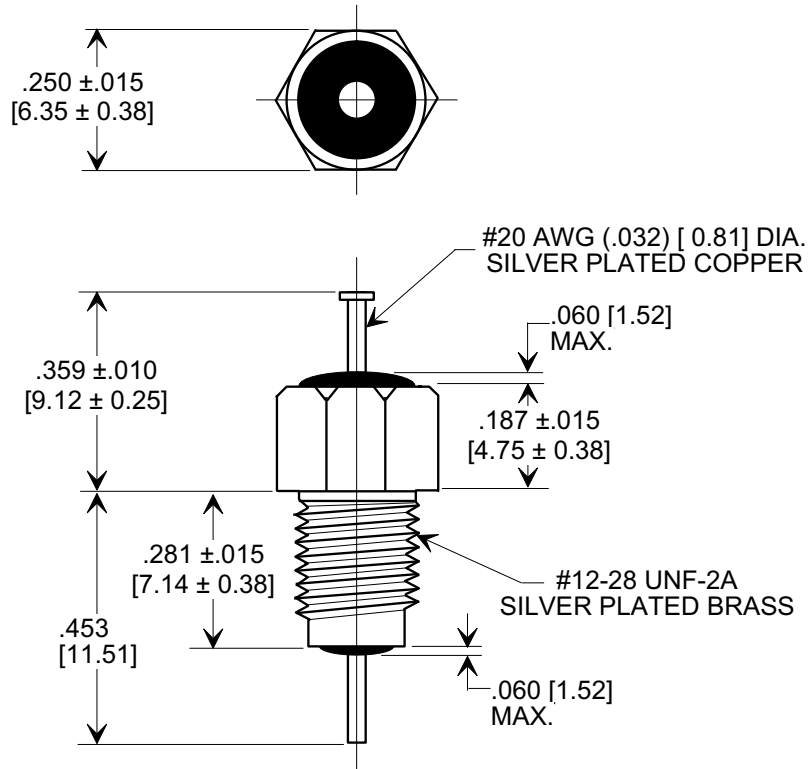
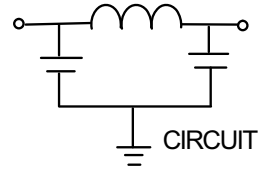
This drawing is the property of Tusonix, Inc., and may not be used, reproduced, published or disclosed to others without expressed authorization by Tusonix Inc.

MARKETING SALES DRAWING

DIMENSIONS IN INCHES - DO NOT SCALE THIS DRAWING
DIMENSIONS IN METRIC - []



Electrical Testing
per Tusonix standard
test plans and Mil-Std-202
Test Methods.



NOTE:

1. HEX NUT AND LOCK WASHER SUPPLIED.
2. MIL PART NO. TO BE STAMPED ON HEX FLATS, 2 CHARACTERS PER FLAT (MI/57/33/43/00/01)

1500	200	200	10	---	---	45	45
	85°C	125 °C		50 MHz	100 MHz	1 GHz	10 GHz
MIN. CAP. (pF)	WORKING VOLTAGE (WVdc)		CURRENT IAC (A) (O-400 Hz)	MINIMUM NO LOAD INSERTION LOSS (dB) AT 25°C PER MIL-STD -220			

X-2015 Rev-0

REVISION RECORD Original Release C.O. ECO-653	A	TOLERANCES unless otherwise specified 2 PLC. DECIMAL ± N/A 3 PLC. DECIMAL ± .031 ANGLES ± N/A	Title M15733/43-0001 BUSHING STYLE EMI FILTER		
	Drawn L.E. 04-09-09 Scale 3X				
	Approved R.L. 04-09-09		TUSONIX TUCSON, ARIZONA	A	4204-501