



Distributor of CTS Electronic Components: Excellent Integrated System Limited

Datasheet of M15733/61-0004 - FILTER EMI 2000 PF PI TYPE MIL

Contact us: [sales@integrated-circuit.com](mailto:sales@integrated-circuit.com) Website: [www.integrated-circuit.com](http://www.integrated-circuit.com)

---

## Excellent Integrated System Limited

Stocking Distributor

Click to view price, real time Inventory, Delivery & Lifecycle Information:

[CTS Electronic Components](#)

[M15733/61-0004](#)

For any questions, you can email us directly:

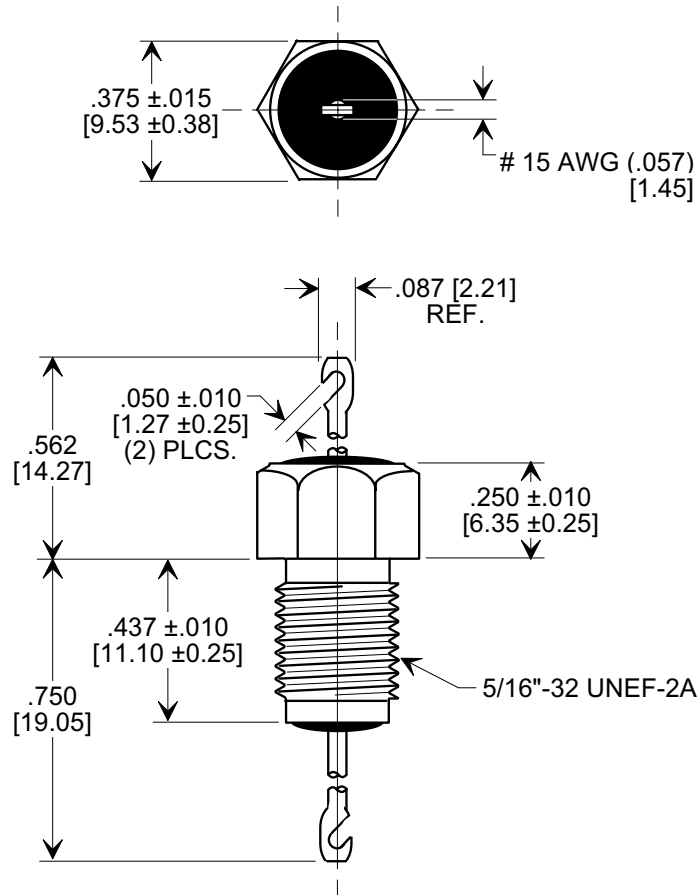
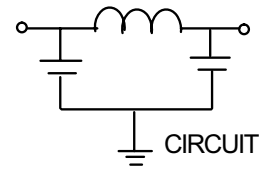
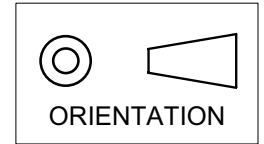
[sales@integrated-circuit.com](mailto:sales@integrated-circuit.com)

**MARKETING SALES DRAWING**

**DIMENSIONS IN INCHES - DO NOT SCALE THIS DRAWING**  
**DIMENSIONS IN METRIC - [ ]**

This drawing is the property of Tusonix, Inc., and may not be used, reproduced, published or disclosed to others without expressed authorization by Tusonix Inc.

**Electrical Testing**  
 per Tusonix standard  
 test plans and Mil-Std-202  
 Test Methods.



**NOTES:**

- SUPPLIED WITH HEX NUT AND INTERNAL TOOTH LOCK WASHER.
- PARTS WILL BE MARKED M15733/61.

2000	500 VDC / 350 VAC	25 AC	I.R. MIN. @ 100 (VDC.)	DWV	---	55	70	70
	125 °C				10 MHz	100 MHz	1 GHz	10 GHz
MIN. CAP. (pF)	WORKING VOLTAGE	CURRENT (A)	10 G Ω	1250 VDC	MINIMUM NO LOAD INSERTION LOSS (dB) AT 25°C PER MIL-STD -220			

X-2015 Rev-0 <b>REVISION RECORD</b> Original Release C.O. 20070423-1-01	0	TOLERANCES unless otherwise specified 2 PLC. DECIMAL ± N/A 3 PLC. DECIMAL ± .031 [0.79]		Title <b>MIL-15733/61-0004</b> <b>BUSHING STYLE</b> <b>FILTER</b>	
		ANGLES ± N/A		Drawn S.M. 04-23-07	Scale 2 X
	<b>TUSONIX</b> TUCSON, ARIZONA		Approved R.L. 04-23-07		
	<b>A</b>	<b>4206-501</b>			