

Excellent Integrated System Limited

Stocking Distributor

Click to view price, real time Inventory, Delivery & Lifecycle Information:

[CTS Electronic Components](#)

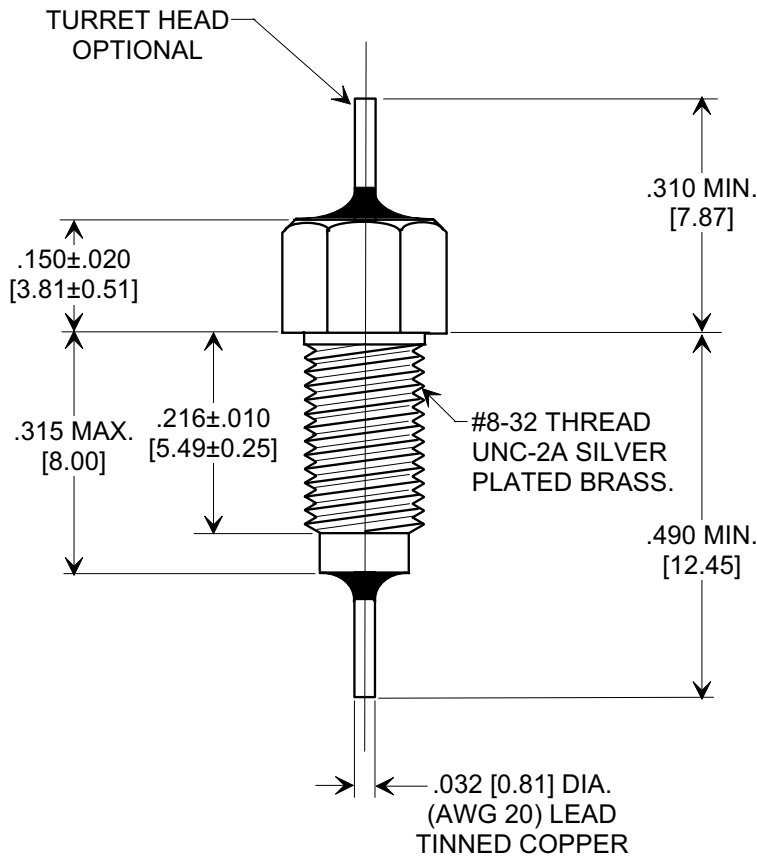
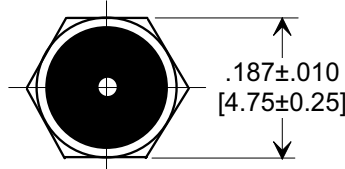
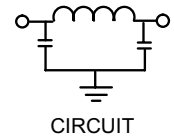
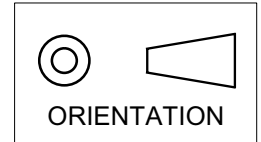
[M15733/61-0014](#)

For any questions, you can email us directly:

sales@integrated-circuit.com

Electrical Testing
 per Tusonix standard
 test plans and Mil-Std-202
 Test Methods.

MARKETING SALES DRAWING
DIMENSIONS IN INCHES - DO NOT SCALE THIS DRAWING
DIMENSIONS IN METRIC - []



MIN. CAP.	125°C WORKING VOLTAGE	CURRENT I _{dc}	MINIMUM NO LOAD INSERTION LOSS (dB) @ 25°C PER MIL-STD-220					
			10 MHz	50 MHz	100 MHz	200 MHz	1 GHz	10 GHz
10,000 pF	50 VDC	20A	20	50	65	70	70	70

X-2015 Rev-0

REVISION RECORD Original Release C.O. WAS SK7096-001-S E.C.06-14-93 930528-2 DWG. REVISED E.C. 05-12-94 940217-3 ADDED DIM .216 AND RMVD DIMS .160 & .800, ADDED MIL SLASH # TO TITLE, RDRN TO NEW STD CMPTR FRMT. E.C.11-05-98 19981105-1-01 REVISION 1 CHANGE ORDER #CORRECTED. S.M. 11-19-98 19981118-4-01 ADDED ORIEN., SILVER NOTE & COPPER NOTE.S.M. 11-21-05 20051116-3-02	--TOLERANCES-- Unless Otherwise Specified	Title EMI FILTER MIL 15733/61-0014	
	DECIMAL ±	Drawn E.C. 11-05-98	Scale 4 X
	ANGLES ±	Approved H.R. 11-05-98	
	TUSONIX TUCSON, ARIZONA	A	4251-501