



Distributor of CTS Electronic Components: Excellent Integrated System Limited

Datasheet of M15733/62-0001 - FILTER EMI 1500 PF PI TYPE MIL

Contact us: sales@integrated-circuit.com Website: www.integrated-circuit.com

Excellent Integrated System Limited

Stocking Distributor

Click to view price, real time Inventory, Delivery & Lifecycle Information:

[CTS Electronic Components](#)

[M15733/62-0001](#)

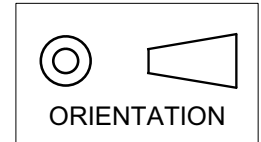
For any questions, you can email us directly:

sales@integrated-circuit.com

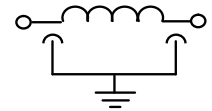
MARKETING SALES DRAWING

DIMENSIONS IN INCHES - DO NOT SCALE THIS DRAWING
DIMENSIONS IN METRIC - []

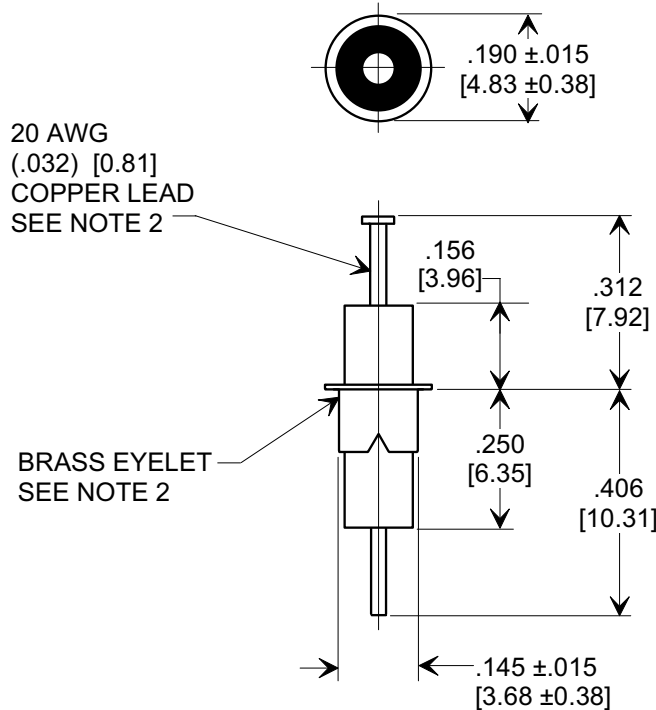
This drawing is the property of Tusonix, Inc., and may not be used, reproduced, published or disclosed to others without expressed authorization by Tusonix Inc.



Electrical Testing
per Tusonix standard
test plans and Mil-Std-202
Test Methods.



Circuit



NOTES:

1. TUSONIX STANDARD PART NUMBER: 4101-501.
2. LEAD FINISH: 60/40 SOLDER PLATED.
EYELET FINISH: 60/40 SOLDER PLATED.

MIN. CAP (pF)	WORKING VOLTAGE 125°C	CURRENT Idc	DWV @ 2 SEC.	I.R. MIN.	MINIMUM NO-LOAD INSERTION LOSS (dB) AT 25°C PER MIL-STD-220			
					10 MHz	100 MHz	1 GHz	10 GHz
1500	200 DC, 140 AC	10A	1000 VDC	10 G Ω	3	45	70	70

REVISION RECORD Original Release C.O. ECO-499	A	--TOLERANCES-- Unless Otherwise Specified DECIMAL ± .031 [0.79] ANGLES ±	Title		
			EMI FILTER M15733/62-0001		
			Drawn	S.M. 01-27-09	Scale 3 X
			Approved	R.L. 01-27-09	
		TUSONIX TUCSON, ARIZONA	A	4101-501	