

## Excellent Integrated System Limited

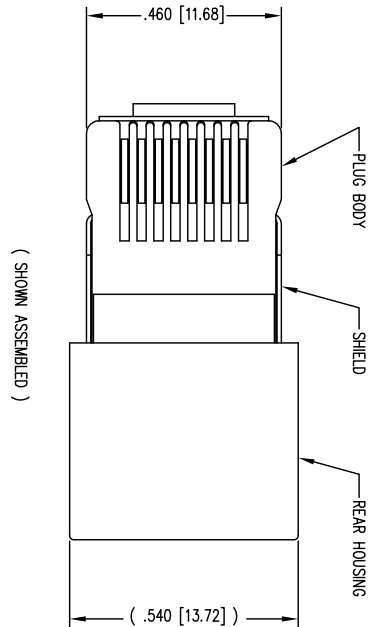
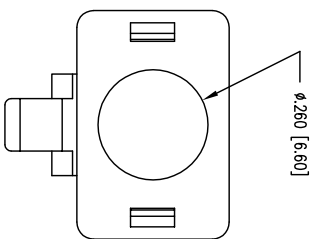
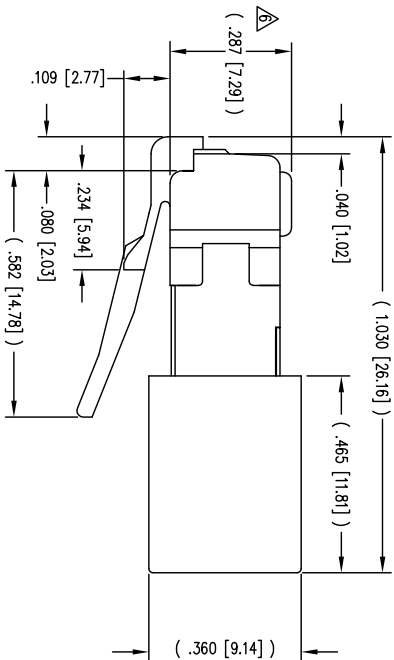
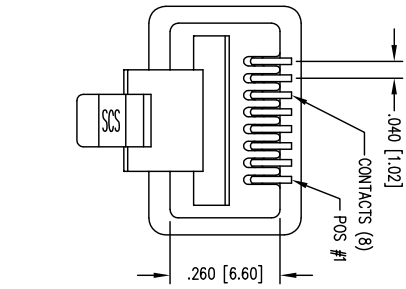
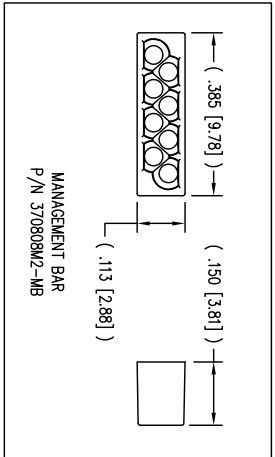
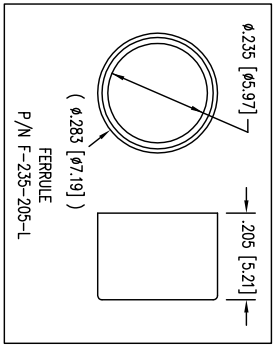
Stocking Distributor

Click to view price, real time Inventory, Delivery & Lifecycle Information:

[Bel Fuse Inc.](#)  
[943-SP-370808SM2](#)

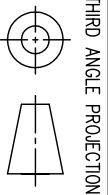
For any questions, you can email us directly:  
[sales@integrated-circuit.com](mailto:sales@integrated-circuit.com)

REV. 7/3/03



( SHOWN ASSEMBLED )

BULK	50 MICRO-INCHES [1.27um]	943-SP-3
PACKAGE	CONTACT PLATING IN MATING AREA	PART N



**Bel Stewart Comm**  
 1118 Susquehanna Trail South  
 Glen Rock, PA 17327-9199  
 (717) 235-7512 Fax: (717) 235-7954 http://www

TITLE: CAT 5 PLUG, 8 X 8 SHIELDED PLUG

THIRD ANGLE PROJECTION  
 DO NOT SCALE DRAWING  
 DRAWING IS SUBJECT TO CHANGE WITHOUT NOTICE  
 DIMENSIONS: INCHES [METRIC]  
 UNLESS OTHERWISE SPECIFIED TOLERANCES ARE ±.005 [0.13] ANGLES ARE ± 1°  
 SHEET NO. 1 OF 1

THIS DRAWING AND THE SUBJECT MATTER SHOWN THEREON ARE CONFIDENTIAL AND THE PROPRIETARY PROPERTY OF BEL STEWART COMMUNICATIONS AND SHALL NOT BE REPRODUCED, COPIED, OR USED IN ANY MANNER WITHOUT PRIOR WRITTEN CONSENT OF BEL STEWART COMMUNICATIONS. THIS PRODUCT MAY BE PROTECTED BY ONE OR MORE OF THE FOLLOWING US PATENTS: 5628647, 6402559, 6409535, 6524128, 6775371, 8033853. OTHER PATENTS MAY BE PENDING.

DRW BY: R  
 APP'D BY: T  
 DWG NO. C

- NOTES:  
 1- PLUG KIT CONSISTS OF :  
 PRE-INSERTED PLUG HOUSING & SHIELD  
 MANAGEMENT BAR  
 FERRULE  
 2- MATERIALS :  
 FRONT HOUSING PLASTIC : CLEAR POLYCARBONATE  
 MANAGEMENT BAR : CLEAR POLYCARBONATE  
 SHIELD : TIN PLATED BRASS  
 CONTACTS : PHOSPHOR BRONZE, SELECTIVE  
 FERRULE : NICKEL OR TIN PLATED BRASS  
 3- CONTACTS TERMINATE STRANDED & SOLID 0 TO .042 [1.07] OUTSIDE DIAMETER OF INSUL  
 4- FOR PRODUCT SPECIFICATION SEE PRO26-0  
 5- DIMENSIONS AND TOLERANCES COMPLY WITH  
 7- TERMINATED PLUG HEIGHT: .237 [6.02] ±.4  
 7- DESIGNED FOR CATEGORY 5/5e APPLICATION

DATE	RE
3-31-06	A
6-25-09	A
2-14-11	A
5-23-12	A