

Excellent Integrated System Limited

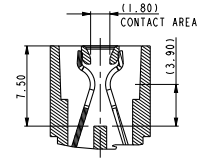
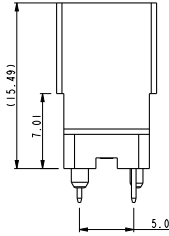
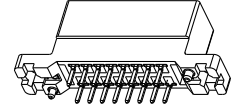
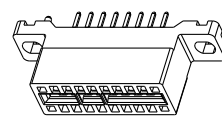
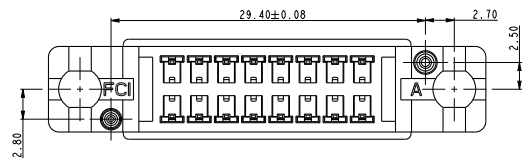
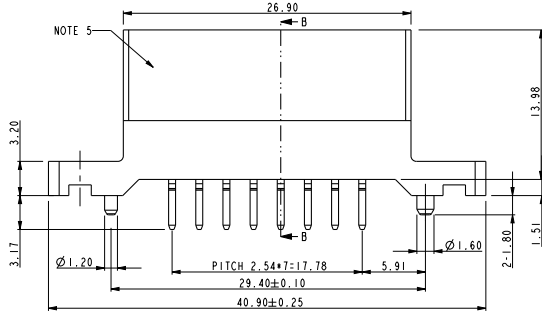
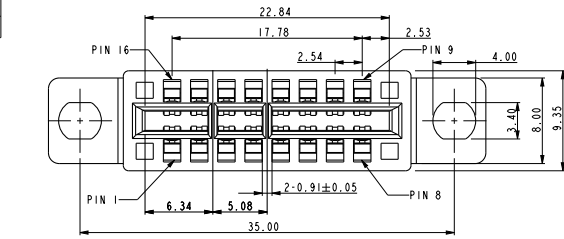
Stocking Distributor

Click to view price, real time Inventory, Delivery & Lifecycle Information:

[FCI](#)
[10046972-001LF](#)

For any questions, you can email us directly:
sales@integrated-circuit.com

PRODUCT NO
10046972-001LF



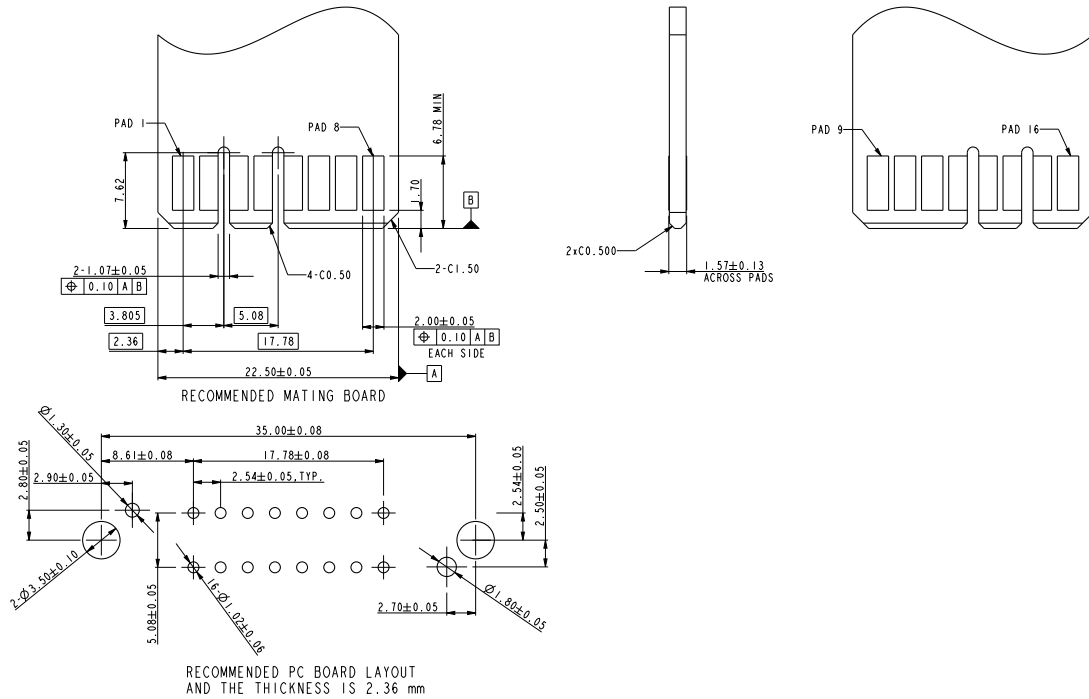
SECTION B-B

- NOTE:
1. Material:
HOUSING: HIGH TEMPERATURE THERMOPLASTIC, UL 94 V-0 FLAME RETARDANT.
TERMINAL: HIGH CONDUCTIVITY COPPER ALLOY.
PLATING SPEC AS BELOW:
Ni: 50µ" UNDER PLATED.
Au: 30µ" OVER CONTACT AREA, (ONE SIDE)
Mo: 1µ" 120µ" OVER SOLDERING AREA.
 2. PACKING SPEC. GS-14-937.
 3. PRODUCT SPEC. GS-12-338.
 4. PART NUMBER 10046972-001LF MEETS EUROPEAN UNION DIRECTIVE AND OTHER COUNTRY REGULATIONS AS DESCRIBED IN GS-22-008. THE HOUSING WILL WITHSTAND EXPOSURE TO 260°C PEAK TEMPERATURE FOR 10 SECONDS IN A WAVE SOLDER APPLICATION WITH A CIRCUIT BOARD.
 5. PRODUCT MARKING ON HOUSING IN AREA SHOWN MEETS AFCI SPECIFICATION: GS-24-007.
 6. A SYMBOL WILL BE NEXT TO ANY DIMENSION, VIEW, OR NOTE WHICH HAS BEEN MODIFIED WITH THE CURRENT DRAWING REVISION.

spec ref	*	dr	w wadmin	2006/08/26	projection	MM	size	A4	scale	1.000	
tolerance std	TOLERANCES UNLESS OTHERWISE SPECIFIED	eng	Sunny2 Liu	2016/05/05		← →	ec n no	ELX-DG-22934-1			
		chr	Terris Liu	2016/05/20				rel level	Released		
surface	linear	appr	Pei-Ming Zheng	2016/05/24	product family	PEC VT WITH MOUNTING EARS	dwg no	10046972		rev	G
	0.X ±0.5										
	0.XX ±0.25										
	0.XXX ±0.13										
	angular 0° ±°										
		Amphenol FCI	title	2X8P			cat. no.	*	Product - Customer Drw		sheet 1 of 4

Creo File - REV C - 2016-02-12

PRODUCT NO
10046972-001LF



spec ref	*	dr	wcadmin	2006/08/26	projection	MM	size	A4	scale	1.000										
tolerance std	TOLERANCES UNLESS OTHERWISE SPECIFIED	eng	Sunny2 Liu	2016/05/05			ec n no	ELX-DG-22934-1												
		chr	Terris Liu	2016/05/20			rel level	Released												
surface	<table border="1"> <tr> <td>linear</td> <td>0.X</td> <td>±0.5</td> </tr> <tr> <td></td> <td>0.XX</td> <td>±0.25</td> </tr> <tr> <td></td> <td>0.XXX</td> <td>±0.13</td> </tr> <tr> <td>angular</td> <td>0°</td> <td>±°</td> </tr> </table>	linear	0.X	±0.5		0.XX	±0.25		0.XXX	±0.13	angular	0°	±°	appr	Pei-Ming Zheng	2016/05/24	product family	PEC VT WITH MOUNTING EARS		
linear	0.X	±0.5																		
	0.XX	±0.25																		
	0.XXX	±0.13																		
angular	0°	±°																		
		title	2X8P			dwg no	10046972													
		cat. no.	*	Product - Customer Drw			sheet	2 of 4												

Creo File - REV C - 2016-02-12

PDS: Rev :G

STATUS:Released

Printed: May 24, 2016

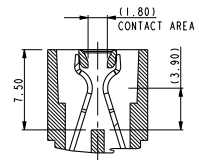
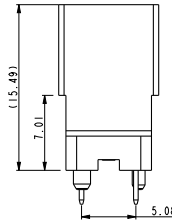
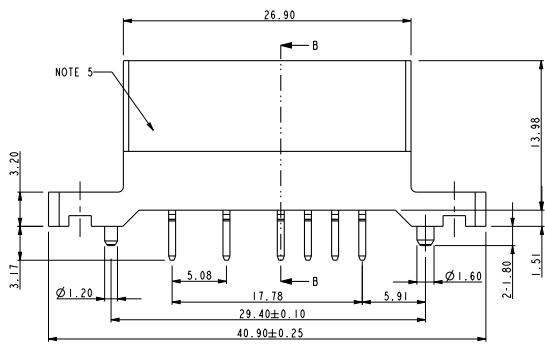
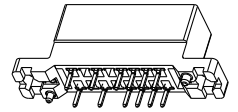
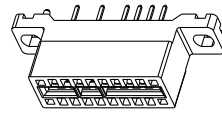
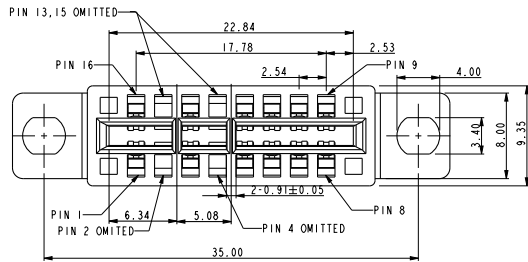
Amphenol
FCI

© 2016 AFCI

D

G

PRODUCT NO
10046972-002LF



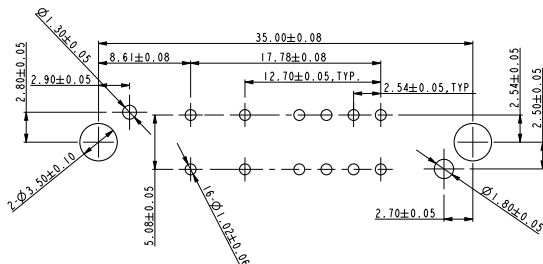
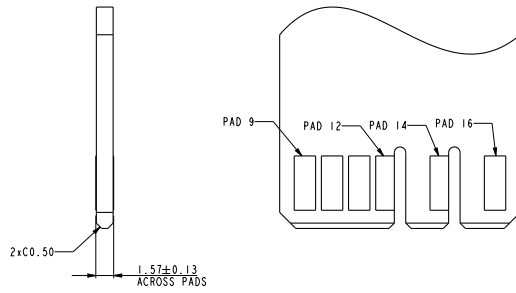
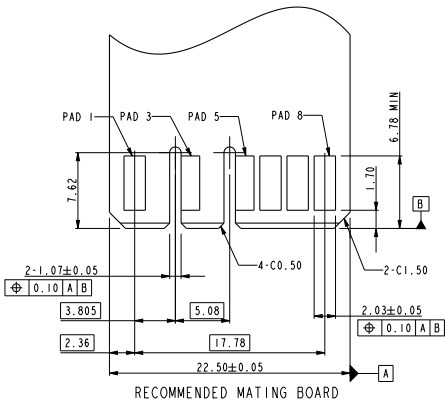
SECTION B-B

- NOTE:
- Material:
HOUSING: HIGH TEMPERATURE THERMOPLASTIC,
UL 94 V-0 FLAME RETARDANT.
TERMINAL: HIGH CONDUCTIVITY COPPER ALLOY.
PLATING SPEC AS BELOW:
Ni 50u" UNDER PLATED.
Au 30u" OVER CONTACT AREA, (ONE SIDE)
Mo/Sn 120u" OVER SOLDERING AREA.
 - PACKING SPEC. GS-14-937.
 - PRODUCT SPEC. GS-12-338.
 - PART NUMBER 10046972-001LF MEETS EUROPEAN UNION DIRECTIVE AND OTHER COUNTRY REGULATIONS AS DESCRIBED IN GS-22-008.
THE HOUSING WILL WITHSTAND EXPOSURE TO 260°C PEAK TEMPERATURE FOR 10 SECONDS IN A WAVE SOLDER APPLICATION WITH A CIRCUIT BOARD.
PRODUCT MARKING ON HOUSING IN AREA SHOWN MEETS AFCI SPECIFICATION: GS-24-007.
6. A SYMBOL WILL BE NEXT TO ANY DIMENSION, VIEW, OR NOTE WHICH HAS BEEN MODIFIED WITH THE CURRENT DRAWING REVISION.

spec ref	*	dr	wcadmin	2006/08/26	projection	MM	size	A4	scale	1.000	
tolerance std	TOLERANCES UNLESS OTHERWISE SPECIFIED	eng	Sunny2 Liu	2016/05/05		← →	ec n no	ELX-DG-22934-1			
		chr	Terris Liu	2016/05/20				rel level	Released		
surface	linear	appr	Pei-Ming Zheng	2016/05/24	product family	PEC VT WITH MOUNTING EARS	dwg no	10046972		rev	G
	angular							Product - Customer Drw		sheet 3 of 4	

Creo File - REV C - 2016-02-12

PRODUCT NO
10046972-002LF



RECOMMENDED PC BOARD LAYOUT
AND THE THICKNESS IS 2.36 mm

spec ref	*	dr	wcadmin	2006/08/26	projection	MM	size	A4	scale	1.000
tolerance std	TOLERANCES UNLESS OTHERWISE SPECIFIED	eng	Sunny2 Liu	2016/05/05			ec n no	ELX-DG-22934-1		
surface <input checked="" type="checkbox"/> linear <input type="checkbox"/> angular	0.X	±0.5	chr	Terris Liu				2016/05/20	rel level	Released
	0.XX	±0.25	appr	Pei-Ming Zheng	2016/05/24	product family	product family PEC VT WITH MOUNTING EARS 2X8P	dwg no 10046972		rev G
	0.XXX	±0.13	cat. no.		*				Product - Customer Drw	
angular	0°	±°								

Creo File - REV C - 2016-02-12

Amphenol
FCI

© 2016 APCI

PDS: Rev :G

STATUS:Released

Printed: May 24, 2016