



## **Excellent Integrated System Limited**

Stocking Distributor

Click to view price, real time Inventory, Delivery & Lifecycle Information:

[NorComp](#)  
[160-015-003-031](#)

For any questions, you can email us directly:  
[sales@integrated-circuit.com](mailto:sales@integrated-circuit.com)

**DESCRIPTION: 15 POSITION SLIDE LOCK**

**SCREW**

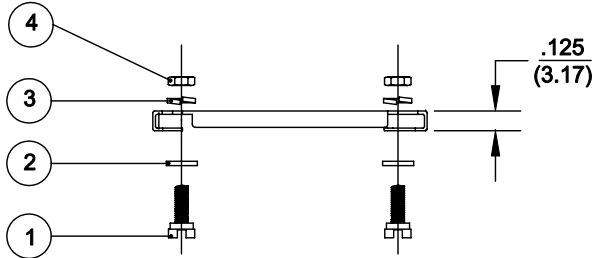
ITEM NO.
1

**FLAT & SPLIT WASHERS**

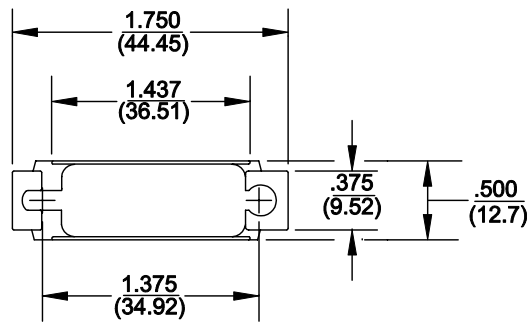
ITEM NO.	ID	OD	WIDTH
2	.120	.220	.031
3	.120	.200	.031

**HEX NUT**


ITEM NO.	ID	OD	WIDTH
4	4-40	.187	.062



- KIT INCLUDES:**  
 (1) SLIDE LOCK BAR  
 (2) 4-40 POSTS  
 (2) FLAT WASHERS  
 (2) LOCK WASHERS  
 (2) 4-40 NUTS



- MATERIALS:**  
 SLIDE LOCK: STAINLESS STEEL  
 WASHER, LOCK WASHER, NUT: STEEL  
 YELLOW CHROMATE PLATING

 <b>NorComp</b>	THESE DRAWINGS AND SPECIFICATIONS ARE THE PROPERTY OF NorComp AND SHALL NOT BE REPRODUCED, COPIED OR USED AS THE BASIS FOR THE MANUFACTURE OF SALE OF APPARATUS WITHOUT WRITTEN PERMISSION.		DRAWN: <b>WAYNE ROBBINS</b>	DATE: <b>9-16-98</b>
			CHECKED:	DATE:
		SCALE: 1:1	SHEET 1 OF 1	REV 1
		DWG NO. <b>160-015-003-031</b>		