

## Excellent Integrated System Limited

Stocking Distributor

Click to view price, real time Inventory, Delivery & Lifecycle Information:

[Samtec, Inc.](#)  
[ASP-134604-01](#)

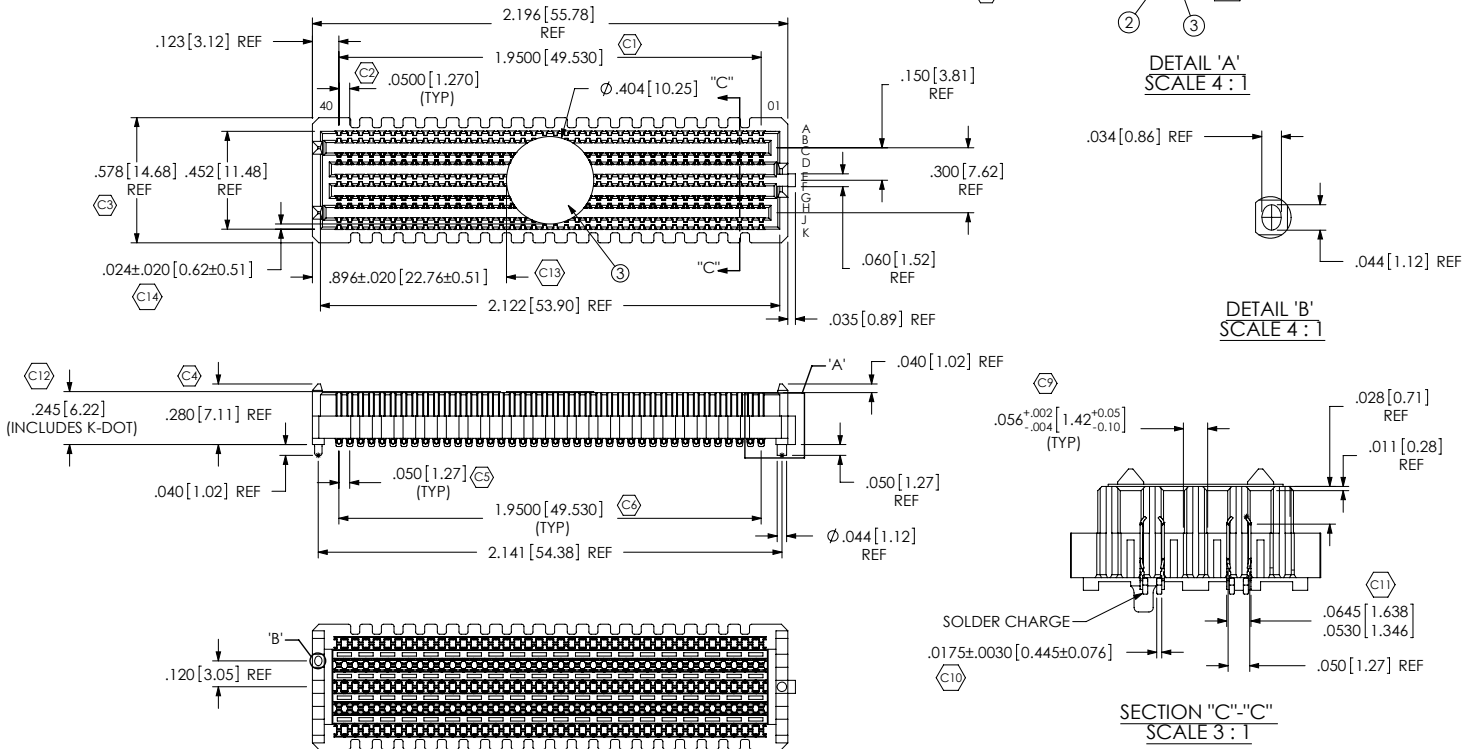
For any questions, you can email us directly:  
[sales@integrated-circuit.com](mailto:sales@integrated-circuit.com)

REVISION L

NOTES:

1. VITA 57 CONNECTOR.
2. FILL ROWS 03, 04, 07 & -08 ONLY.
3. Ⓢ REPRESENTS A CRITICAL DIMENSION.
4. MINIMUM PUSHOUT FORCE: .75 LBS.
5. PARTS TO BE PACKAGED IN TAPE & REEL.
6. NOTE DELETED.
7. ATTACH LABEL "SEAX-0001" TO EACH TAPE & REEL PACKAGE.
8. MAXIMUM ROW TO ROW VARIATION .003[0.08].
9. DIMENSION C8 MUST BE MEASURED IN THE FOUR OUTSIDE CORNERS USING INSPECTION FIXTURE AT-1817-836-1, USE CO-AU-WI-2003-M FOR PROCESS.

DO NOT SCALE FROM THIS PRINT

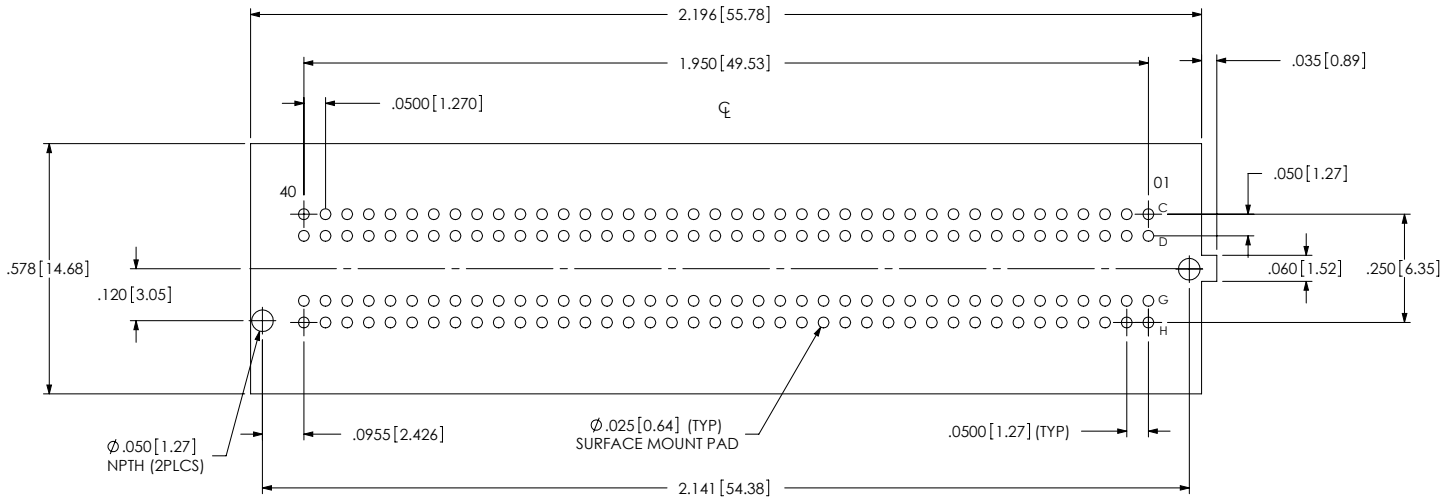


ITEM NO.	PART NUMBER	QUANTITY	MATERIAL
1	SEAM-40-03.5-10-A	1,0000	LCP, UL 94 V0, COLOR: BLACK
2	NEW-SUB-T-1M36-03.5-S-2	160.00	COPPER ALLOY / LEAD FREE SOLDER
3	K-DOT-.404-.500-.005	1,0000	POLYIMIDE FILM
4	CT-SEAM033MS	1,0000	CONDUCTIVE POLYMER

<p>UNLESS OTHERWISE SPECIFIED, DIMENSIONS ARE IN INCHES. TOLERANCES ARE:</p> <p>DECIMALS ANGLES</p> <p>.XX: ±.01[.3] 2°</p> <p>.XXX: ±.005[.13]</p> <p>.XXXX: ±.0020[.051]</p>	<p>PROPRIETARY NOTE</p> <p>THIS DOCUMENT CONTAINS INFORMATION CONFIDENTIAL AND PROPRIETARY TO SAMTEC, INC. AND SHALL NOT BE REPRODUCED OR TRANSFERRED TO OTHER DOCUMENTS OR DISCLOSED TO OTHERS OR USED FOR ANY PURPOSE OTHER THAN THAT WHICH IT WAS OBTAINED WITHOUT THE EXPRESSED WRITTEN CONSENT OF SAMTEC, INC.</p>	<p><b>samtec</b></p> <p>520 PARK EAST BLVD, NEW ALBANY, IN 47150          PHONE: 812-944-6733 FAX: 812-948-5047          e-Mail: info@SAMTEC.com code: 55322</p>
<p>DO NOT SCALE DRAWING SHEET SCALE: 3:2</p> <p>PLATING:          CONTACT AREA: .000030 GOLD OVER .000050 NICKEL          REMAINDER: .000200 REF TIN OVER .000050 NICKEL</p>	<p>DESCRIPTION:          .050 PITCH TERMINAL ARRAY ASSEMBLY</p>	
<p>F:\DWG\MISC\VMKTG\ASP-134604-01-MKT.SLDRWR</p>	<p>DWG. NO.  <b>ASP-134604-01</b></p>	
	<p>BY: G. PURVIS 11/07/2007</p>	<p>SHEET 1 OF 4</p>

ASP-134604-01  
 REVISION L

**RECOMMENDED PCB LAYOUT FOR ASP-134604-01**



ALL DIMENSIONS ARE SYMMETRIC ABOUT THE CENTERLINE.

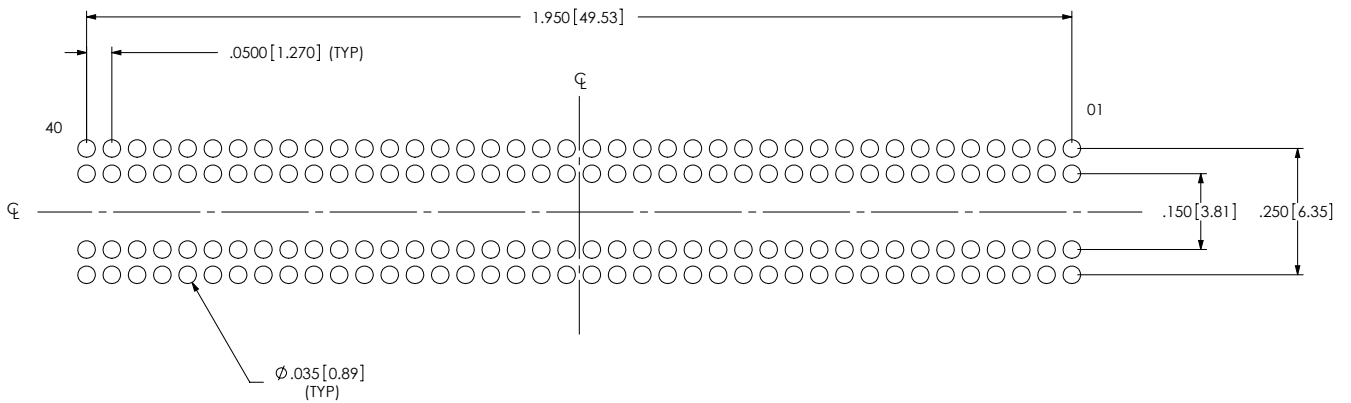
<p><b>PROPRIETARY NOTE</b>          THIS DOCUMENT CONTAINS INFORMATION CONFIDENTIAL AND PROPRIETARY TO SAMTEC, INC. AND SHALL NOT BE REPRODUCED OR TRANSFERRED TO OTHER DOCUMENTS OR DISCLOSED TO OTHERS OR USED FOR ANY PURPOSE OTHER THAN THAT WHICH IT WAS OBTAINED WITHOUT THE EXPRESSED WRITTEN CONSENT OF SAMTEC, INC.</p>	<p><b>samtec</b>          520 PARK EAST BLVD, NEW ALBANY, IN 47150          PHONE: 812-944-6733 FAX: 812-948-5047          e-Mail: info@SAMTEC.com code: 55322</p>
<p>SHEET SCALE: 2:1</p>	<p>DESCRIPTION:          .050 PITCH TERMINAL ARRAY ASSEMBLY</p>
<p>F:\DWG\MISC\MKTG\ASP-134604-01-MKT.SLDDRW</p>	<p>DWG. NO. <b>ASP-134604-01</b>          BY: G. PURVIS 11/07/2007 SHEET 2 OF 4</p>

ASP-134604-01

REVISION L

**RECOMMENDED STENCIL LAYOUT FOR ASP-134604-01**

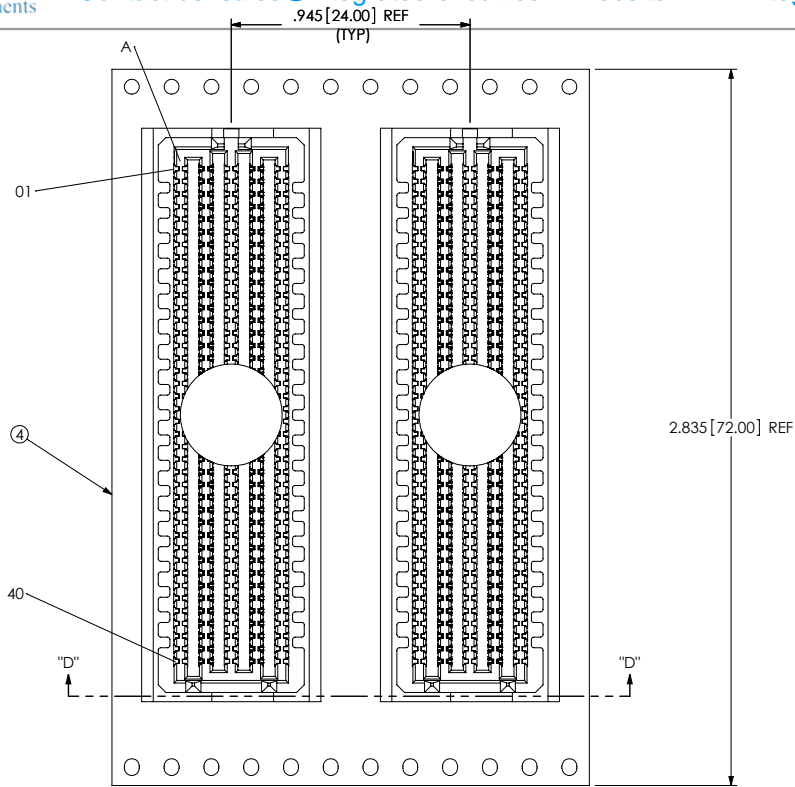
NOTES:  
STENCIL TO BE .0060 [.152] THICK.



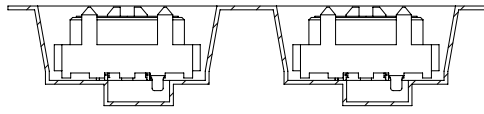
ALL DIMENSIONS ARE SYMMETRIC ABOUT THE CENTERLINE.

<p><b>PROPRIETARY NOTE</b>          THIS DOCUMENT CONTAINS INFORMATION CONFIDENTIAL AND PROPRIETARY TO SAMTEC, INC. AND SHALL NOT BE REPRODUCED OR TRANSFERRED TO OTHER DOCUMENTS OR DISCLOSED TO OTHERS OR USED FOR ANY PURPOSE OTHER THAN THAT WHICH IT WAS OBTAINED WITHOUT THE EXPRESSED WRITTEN CONSENT OF SAMTEC, INC.</p>	<p><b>samtec</b>          520 PARK EAST BLVD, NEW ALBANY, IN 47150          PHONE: 812-944-6733 FAX: 812-948-5047          e-Mail: info@SAMTEC.com code: 55322</p>
<p>SHEET SCALE: 1:2</p>	<p>DESCRIPTION: .050 PITCH TERMINAL ARRAY ASSEMBLY</p>
<p>F:\DWG\MISC\MKTG\ASP-134604-01-MKT.SLDDRW</p>	<p>DWG. NO. <b>ASP-134604-01</b>          BY: G. PURVIS 11/07/2007 SHEET 3 OF 4</p>


ASP-134604-01  
 REVISION L



USER DIRECTION OF UN-REELING →  
 POCKET NOT DETAILED



SECTION "D"."D"  
 PACKAGING VIEW

<p><b>PROPRIETARY NOTE</b>          THIS DOCUMENT CONTAINS INFORMATION CONFIDENTIAL AND PROPRIETARY TO SAMTEC, INC. AND SHALL NOT BE REPRODUCED OR TRANSFERRED TO OTHER DOCUMENTS OR DISCLOSED TO OTHERS OR USED FOR ANY PURPOSE OTHER THAN THAT WHICH IT WAS OBTAINED WITHOUT THE EXPRESSED WRITTEN CONSENT OF SAMTEC, INC.</p>	 520 PARK EAST BLVD, NEW ALBANY, IN 47150 PHONE: 812-944-6733 FAX: 812-948-5047 e-Mail: info@SAMTEC.com code: 55322		
	SHEET SCALE: 1.75:1	DESCRIPTION: .050 PITCH TERMINAL ARRAY ASSEMBLY DWG. NO. ASP-134604-01	
F:\DWG\MISC\MKTG\ASP-134604-01-MKT.SLDDRW		BY: G. PURVIS 11/07/2007	SHEET 4 OF 4