

Excellent Integrated System Limited

Stocking Distributor

Click to view price, real time Inventory, Delivery & Lifecycle Information:

[NXP Semiconductors](#)

[LFSTBEB7361](#)

For any questions, you can email us directly:

sales@integrated-circuit.com

LFSTBEB7361 Quick Start Guide

STEP 1 **Unpack the board.**
Verify package contents
according to the kit Web
site: [www.freescale.com/
sensortoolbox](http://www.freescale.com/sensortoolbox)

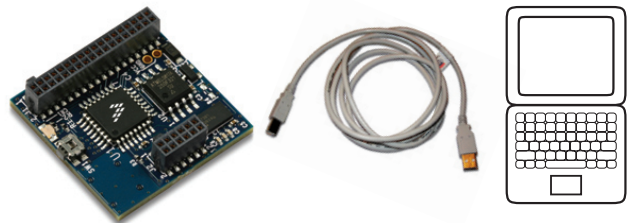
Assemble the hardware by connecting a development board to the interface board. This board is intended for use with an Accelerometer Interface Board, purchased separately. More information can be found on the Web site.

STEP 2 **At [www.freescale.com/
sensortoolbox](http://www.freescale.com/sensortoolbox) download**
the latest software version by
clicking the link. [Download Software](#)

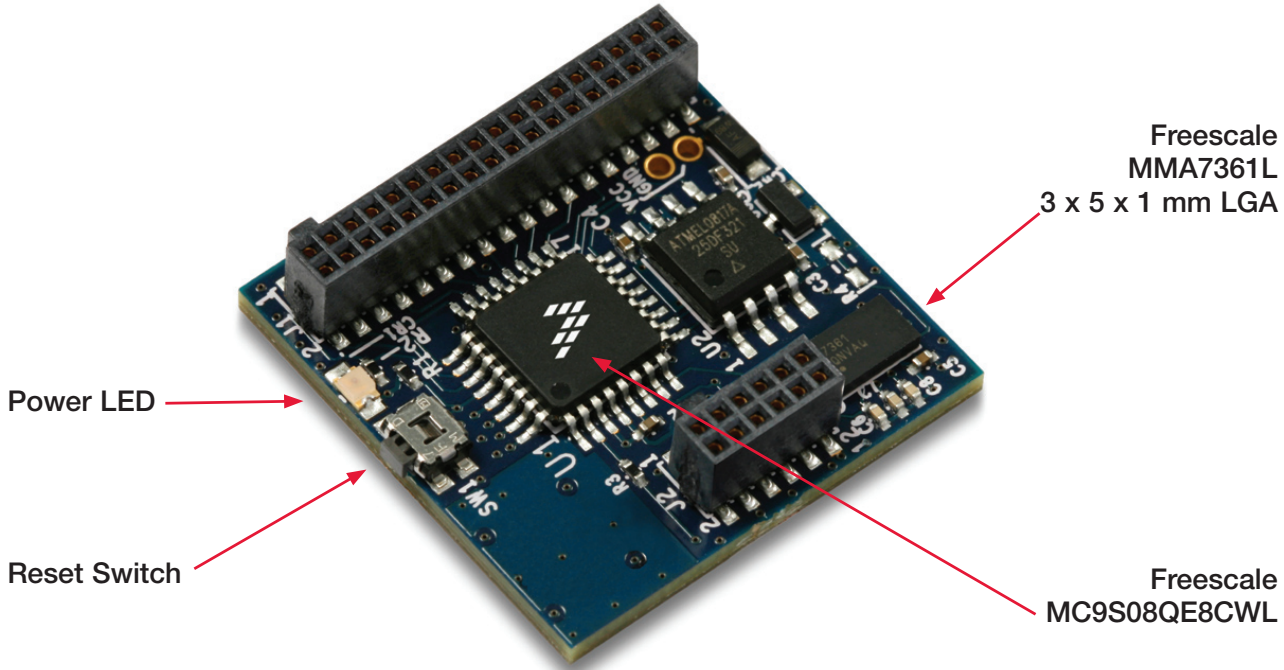
All Sensor Toolbox kits use the same software and driver, so the install only needs to be done once. Follow the on-screen instructions to install the communication driver for the tool. Check back occasionally for software updates.

STEP 3 **Plug in the USB and turn**
the board on using the
power switch. Run the Sensor
Toolbox link on your desktop.

Explore other compatible kits at
www.freescale.com/sensortoolbox



Get to know the LFSTBEB7361 board



Learn more at www.freescale.com/sensortoolbox.

Freescale and the Freescale logo are trademarks or registered trademarks of Freescale Semiconductor, Inc. in the U.S. and other countries. All other product or service names are the property of their respective owners. © Freescale Semiconductor, Inc. 2009.

Doc Number: LFSBEB7361ACCQSG / REV 0
 Agile Number: 926-78350 / REV A

