

## Excellent Integrated System Limited

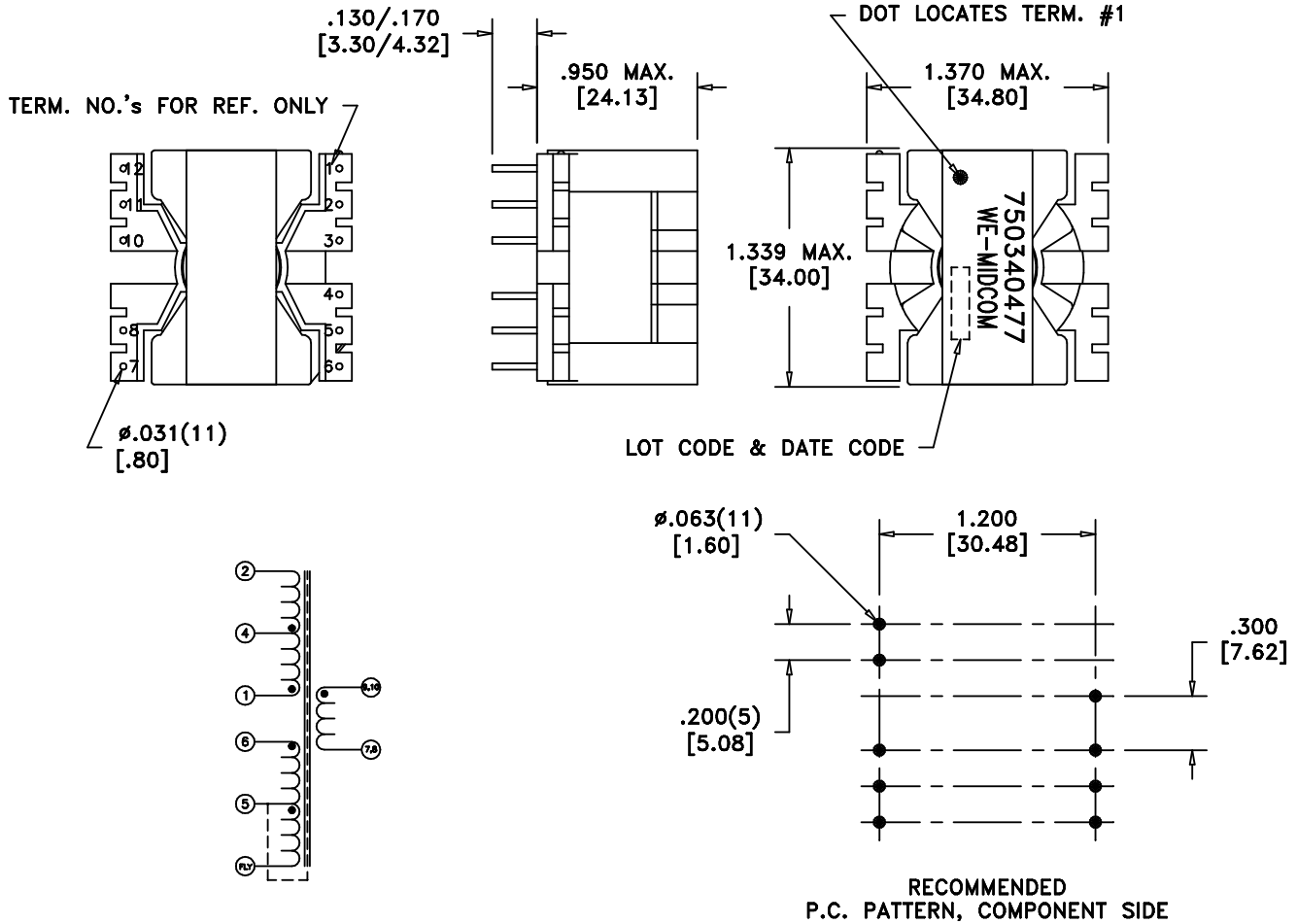
Stocking Distributor

Click to view price, real time Inventory, Delivery & Lifecycle Information:

[Würth Electronics Midcom](#)  
[750340477](#)

For any questions, you can email us directly:  
[sales@integrated-circuit.com](mailto:sales@integrated-circuit.com)

CUSTOMER TERMINAL	RoHS	LEAD(Pb)-FREE
Sn96%Ag4%	Yes	Yes



**ELECTRICAL SPECIFICATIONS @ 25°C unless otherwise noted:**

D.C. RESISTANCE (@20°C):	2-4, .15 ohms max.	1-4, .1 ohms max.
	5-6, .3 ohms max.	5-FLY, .2 ohms max.
	9-8, .15 ohms max.	
DIELECTRIC RATING;	1000VDC, 1 minute tested by applying 1200VDC for 1 second, Pri to Sec	
	500VDC, 1 minute tested by applying 650VDC for 1 second, P4-P5	
INDUCTANCE:	550uH ±5%, 60kHz, 1VAC, 1-2, Ls	
LEAKAGE INDUCTANCE:	6uH Max 4.5uH typ, 60kHz, 1VAC, tie p5 thru p10, 1-2, Ls	
TURNS RATIO:	(2-4):(FLY-5) = 3.2:1, ±2%.	(4-1):(FLY-5) = 3.2:1, ±2%.
	(5-6):(FLY-5) = 2.2:1, ±2%.	(7-9):(FLY-5) = 3.4:1, ±2%.
	(8-10):(FLY-5) = 3.4:1, ±2%.	

DETAILS SUBJECT TO CHANGE

Unless otherwise specified: Tolerances: Angles: ±1° Fractions: ±1/64 Decimals: ±.005 [.13]	DRAWING TITLE	Midcom WE www.midcom-inc.com	
	eiSos pXr. <b>TRANSFORMER</b> 750340477	DRAWING NO. 750340477	REV. 01 9/09
This drawing is dual dimensioned. Dimensions in brackets are in millimeters.	REVISIONS: SEE SHEET 1	SCALE ---	SHEET 2 OF 5

DWG.# 750340477