

Excellent Integrated System Limited

Stocking Distributor

Click to view price, real time Inventory, Delivery & Lifecycle Information:

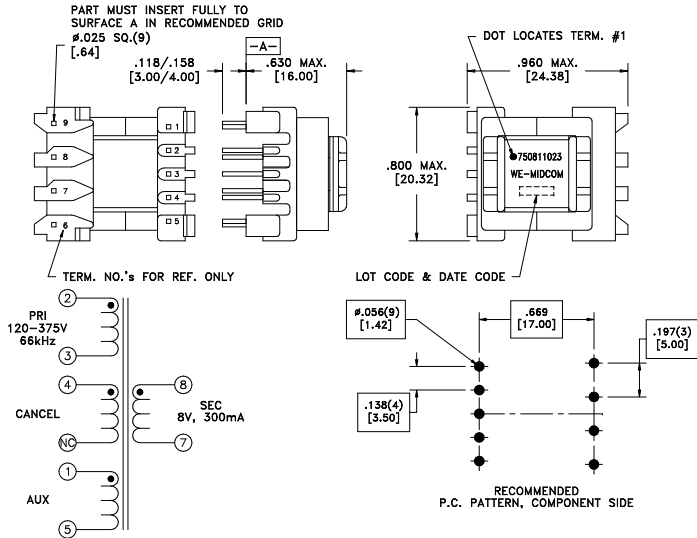
[Würth Electronics Midcom](#)
[750811023](#)

For any questions, you can email us directly:

sales@integrated-circuit.com

CUSTOMER	TERMINAL	RoHS	LEAD(Pb)-FREE
Sn96%, Ag4%	Yes	Yes	Yes

more than you expect



ELECTRICAL SPECIFICATIONS @ 25°C unless otherwise noted:

PARAMETER	TEST CONDITIONS	VALUE
D.C. RESISTANCE	1-5 @20°C	0.035 ohms $\pm 20\%$
D.C. RESISTANCE	2-3 @20°C	2.15 ohms $\pm 10\%$
D.C. RESISTANCE	7-8 @20°C	0.025 ohms $\pm 20\%$
INDUCTANCE	2-3 10kHz, 100mVAC, Ls	2.28mH $\pm 10\%$
SATURATION CURRENT	20% rolloff from initial	300mA
LEAKAGE INDUCTANCE	2-3 tie(1+5, 7+8), 100kHz, 100mVAC, Ls	30uH typ., 45.0uH max.
DIELECTRIC RATING	1-8 4500VAC, 1 second	4500VAC, 1 minute
DIELECTRIC RATING	2-8 4500VAC, 1 second	4500VAC, 1 minute
DIELECTRIC RATING	1-2 625VAC, 1 second	500VAC, 1 minute
URNS RATIO	(2-3):(1-5)	12:1, $\pm 2\%$
URNS RATIO	(2-3):(8-7)	10.8:1, $\pm 2\%$

GENERAL SPECIFICATIONS:

OPERATING TEMPERATURE RANGE: -40°C to +125°C including temp rise.

Designed to comply with the following requirements as defined by IEC61558-2-17:
 - Reinforced insulation for a primary circuit at a working voltage of 400VDC.

REV.	DATE	Packaging Specifications Method: Tray PKG-005B www.midcom-inc.com		Tolerances unless otherwise specified: Angles: $\pm 1^\circ$ Fractions: $\pm 1/64$	Decimals: $\pm .005$ [.13] Footprint: $\pm .005$ [.127]	DRAWING TITLE TRANSFORMER	PART NO. 750811023
6A	3/09	SEE REVISION SHEET FOR REVISION LEVEL		This drawing is dual dimensioned. Dimensions in brackets are in millimeters.		eiSos p/n: 750811023	SPECIFICATION SHEET 1 OF 1