

## Excellent Integrated System Limited

Stocking Distributor

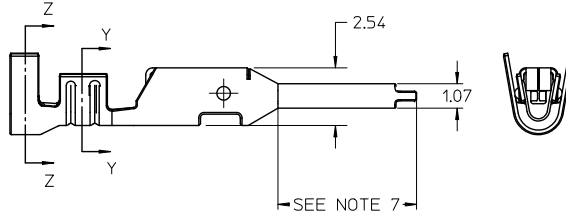
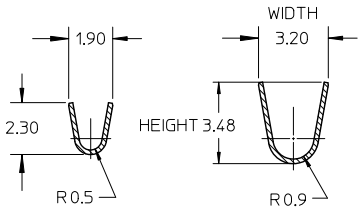
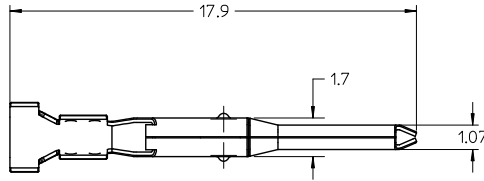
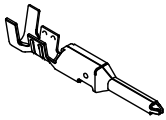
Click to view price, real time Inventory, Delivery & Lifecycle Information:

[Molex Connector Corporation](#)  
[0460560002](#)

For any questions, you can email us directly:  
[sales@integrated-circuit.com](mailto:sales@integrated-circuit.com)

NOTES:

1. MATERIAL: HIGH PERFORMANCE COPPER ALLOY
2. FINISH:
  - 222 - OVERALL TIN: 100 MI MIN OVER NICKEL
  - 228 - SELECT GOLD: 30 MI MIN, SELECT TIN: 100 MI MIN OVER NICKEL
3. PRODUCT SPECIFICATION: PS-46064-001
4. PACKAGING:
  - REEL PACK PER : PK-46056-002
  - LOOSE PACK PER : PK-5556-003
5. TERMINAL TO BE USED WITH ASSY NUMBER: 46065
6. WIRE SPECIFICATION: SEE CHART.
7. WHEN USING OVERALL TIN PLATED TERMINALS: FOR APPLICATIONS INVOLVING VIBRATION AND/OR THERMAL CYCLING, MOLEX STRONGLY RECOMMENDS THE USE OF NYE LUBRICANT, NYOGEL 760G, ON THE MATING END OF THE TERMINAL. LUBRICANT MAY BE APPLIED BEFORE OR AFTER THE TERMINALS ARE INSERTED INTO THE HOUSING.



SECTION Y-Y CONDUCTOR CRIMP  
SECTION Z-Z INSULATION CRIMP

LOOSE PACKAGED MATERIAL NUMBER	REEL PACKAGED MATERIAL NUMBER	FINISH	WIRE SPEC	INSULATION DIA	INSULATION (CRIMPED)				CONDUCTOR (CRIMPED)			
					HEIGHT		WIDTH		HEIGHT		WIDTH	
					MIN	MAX	MIN	MAX	MIN	MAX	MIN	MAX
46056-0004	46056-0002	222 - TIN	UL1015 18/20 AWG	2.52 / 2.81	N/A	3.20	2.70	2.90	1.05	1.15	1.50	1.70
46056-0005	46056-0003	228 - SELECT GOLD	UL1015 18/20 AWG	2.52 / 2.81	N/A	3.20	2.70	2.90	1.05	1.15	1.50	1.70

UPDATE NOTE 4 EC NO: UCP2011-1228 DRAWN: J JAGUILAR CHKD: APPR: FSMITH 2010/10/29 2010/11/09	QUALITY SYMBOLS	GENERAL TOLERANCES (UNLESS SPECIFIED)	DIMENSION STYLE	SCALE	DESIGN UNITS	THIRD ANGLE PROJECTION	
	▽=0	mm INCH	MM ONLY	4:1	METRIC	☉	
	▽=0	4 PLACES ± --- ± ---	DRAWN BY	DATE	TITLE SEALED MINIFIT H20 PLUG TERMINAL		
	▽=0	3 PLACES ± --- ± ---	KSAMIEC	2007/03/22			
▽=0	2 PLACES ± 0.25 ± ---	CHECKED BY	DATE	MOLEX INCORPORATED DOCUMENT NO. SD-46056-001 SHEET NO. 1 OF 1			
▽=0	1 PLACE ± 0.38 ± ---	APPROVED BY	DATE				
	ANGULAR ± 3 °	MATERIAL NO.	DATE				
	DRAFT WHERE APPLICABLE MUST REMAIN WITHIN DIMENSIONS	SEE CHART	2010/11/09				
		SIZE		THIS DRAWING CONTAINS INFORMATION THAT IS PROPRIETARY TO MOLEX INCORPORATED AND SHOULD NOT BE USED WITHOUT WRITTEN PERMISSION			