

Excellent Integrated System Limited

Stocking Distributor

Click to view price, real time Inventory, Delivery & Lifecycle Information:

[Hirose Electric Co Ltd](#)
[BM10NB\(0.8\)-30DS-0.4V\(75\)](#)

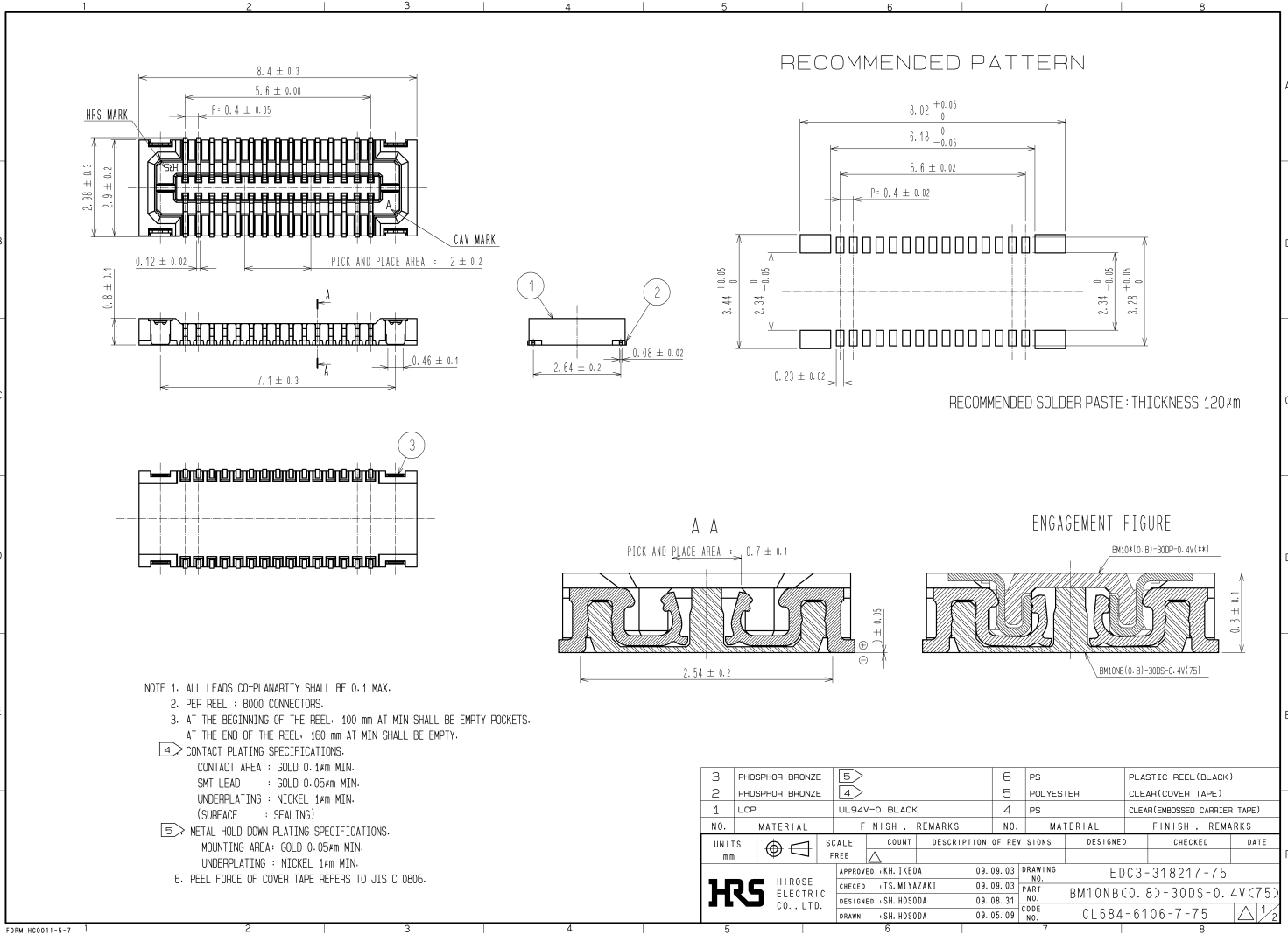
For any questions, you can email us directly:

sales@integrated-circuit.com

2010/01/12 08:13:57 CAROL, TRIBBLE

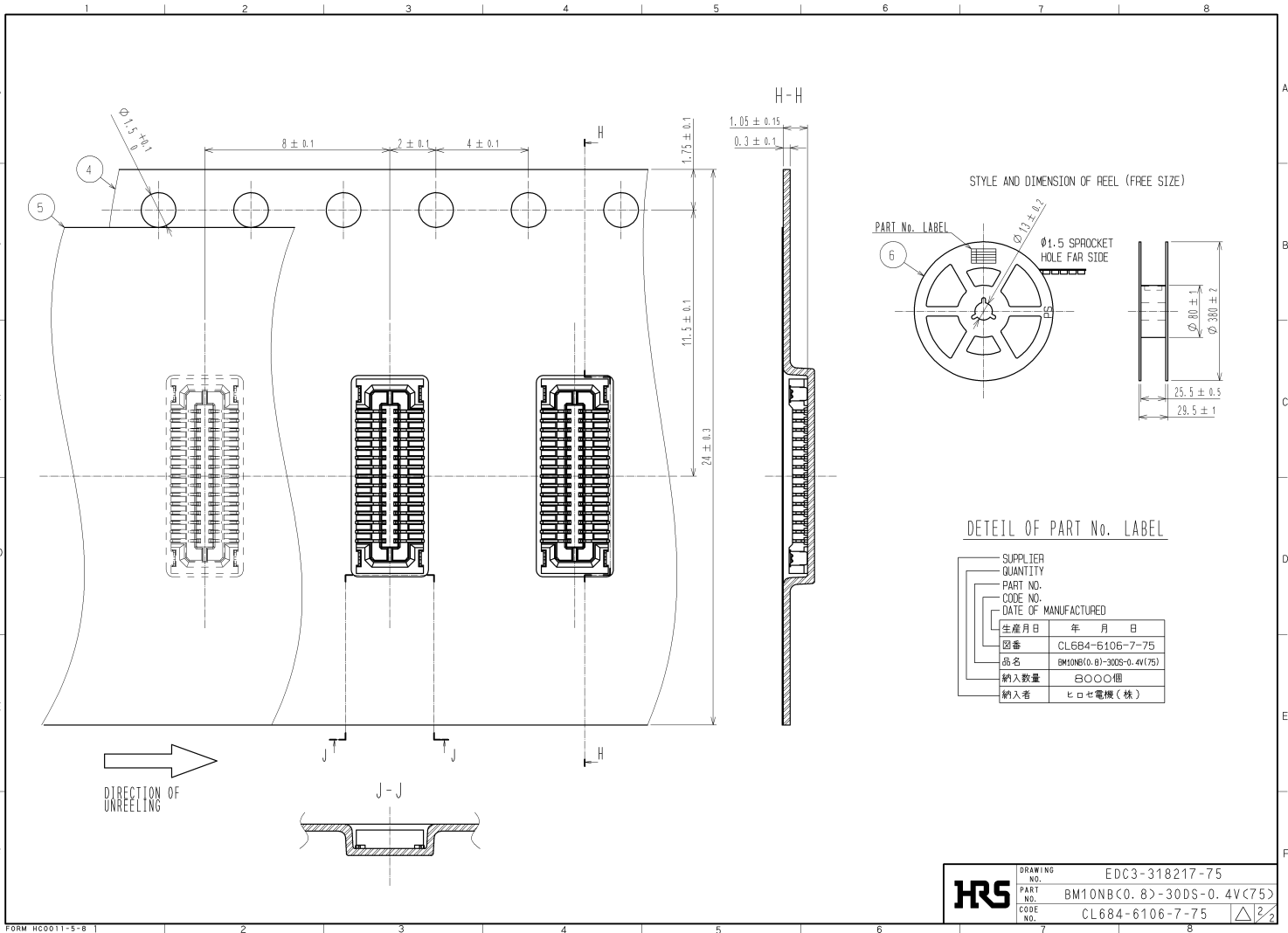
DRAWING FOR REFERENCE: This is subject to change without notice

APPLICABLE STANDARD				
RATING	OPERATING TEMPERATURE RANGE	-35°C TO 85°C (NOTES 1)	STORAGE TEMPERATURE RANGE	-10°C TO 60°C
	VOLTAGE	30V AC	APPLICABLE CONNECTOR	BM10*(0.8)-30DP-0.4V(**)
	CURRENT	0.3A		
SPECIFICATIONS				
ITEM	TEST METHOD	REQUIREMENTS	QT	AT
CONSTRUCTION				
GENERAL EXAMINATION	CONFIRMED VISUALLY AND BY MEASURING INSTRUMENT.	ACCORDING TO DRAWING.	X	X
MARKING	CONFIRMED VISUALLY.		X	X
ELECTRIC CHARACTERISTICS				
CONTACT RESISTANCE	20mV AC OR LESS 1kHz,1mA .	100mΩ MAX.	X	-
INSULATION RESISTANCE	100V DC.	50MΩ MIN.	X	-
VOLTAGE PROOF	100V AC FOR 1 min.	NO FLASHOVER OR BREAKDOWN.	X	-
MECHANICAL CHARACTERISTICS				
INSERTION AND WITHDRAWAL FORCES	MEASURED BY APPLICABLE CONNECTOR.	①INSERTION FORCE :33.1 (N)MAX ②WITHDRAWAL FORCE :6.2 (N)MIN	X	-
MECHANICAL OPERATION	10TIMES INSERTIONS AND WITHDRAWALS.	①CONTACT RESISTANCE: 100mΩ MAX. ②NO DAMAGE, CRACK OR LOOSENESS OF PARTS.	X	-
VIBRATION	FREQUENCY 10 TO 55 TO 10 Hz,APPROX 5min, SINGLE AMPLITUDE 0.75 mm,10CYCLES, FOR 3 DIRECTIONS.	①NO ELECTRICAL DISCONTINUITY OF 1 μs. ②NO DAMAGE, CRACK OR LOOSENESS OF PARTS.	X	-
SHOCK	490 m/s ² DURATION OF PULSE 11 ms AT 3 TIMES FOR 3 DIRECTIONS.	①NO ELECTRICAL DISCONTINUITY OF 1 μs. ②NO DAMAGE, CRACK OR LOOSENESS OF PARTS.	X	-
ENVIRONMENTAL CHARACTERISTICS				
RAPID CHANGE OF TEMPERATURE	TEMPERATURE -55 → 85 °C TIME 30 → 30 min UNDER 5 CYCLES. (RELOCATION TIME TO CHAMBER: WITHIN 2 ~3 MIN)	①CONTACT RESISTANCE: 100mΩ MAX. ②INSULATION RESISTANCE: 50MΩ MIN. ③NO DAMAGE, CRACK OR LOOSENESS OF PARTS.	X	-
DAMP HEAT (STEADY STATE)	EXPOSED AT 40 ± 2 °C, 90 TO 95 %, 96 h.	①CONTACT RESISTANCE: 100mΩ MAX. ②INSULATION RESISTANCE: 25MΩ MIN. ③NO DAMAGE, CRACK OR LOOSENESS OF PARTS.	X	-
SULPHUR DIOXIDE	EXPOSED IN 25 PPM FOR 96h,25°C,75%. (REFER TO JIS C 60068)	①CONTACT RESISTANCE: 100mΩ MAX. ②NO DAMAGE, CRACK OR LOOSENESS OF PARTS.	X	-
COUNT	DESCRIPTION OF REVISIONS	DESIGNED	CHECKED	DATE
△				
REMARKS		APPROVED	KH. IKEDA	09.09.03
NOTE1: INCLUDE THE TEMPERATURE RISING BY CURRENT		CHECKED	TS. MIYAZAKI	09.09.03
Unless otherwise specified, refer to JIS C 5402 and IEC 60512		DESIGNED	SH. HOSODA	09.09.02
		DRAWN	SH. HOSODA	09.05.09
Note QT:Qualification Test AT:Assurance Test X:Applicable Test		DRAWING NO.		ELC4-318217-75
HRS	SPECIFICATION SHEET	PART NO.	BM10NB(0.8)-30DS-0.4V(75)	
	HIROSE ELECTRIC CO., LTD.	CODE NO.	CL684-6106-7-75	△ 1/1



2010/01/12 08:13:59 CAROL.TRI@BELL

DRAWING FOR REFERENCE: This is subject to change without notice



HRS	DRAWING NO.	EDC3-318217-75
	PART NO.	BM10NB(0.8)-30DS-0.4V(75)
	CODE NO.	CL684-6106-7-75
		△β