

Excellent Integrated System Limited

Stocking Distributor

Click to view price, real time Inventory, Delivery & Lifecycle Information:

[Hirose Electric Co Ltd](#)
[BM10NB\(0.8\)-60DS-0.4V\(51\)](#)

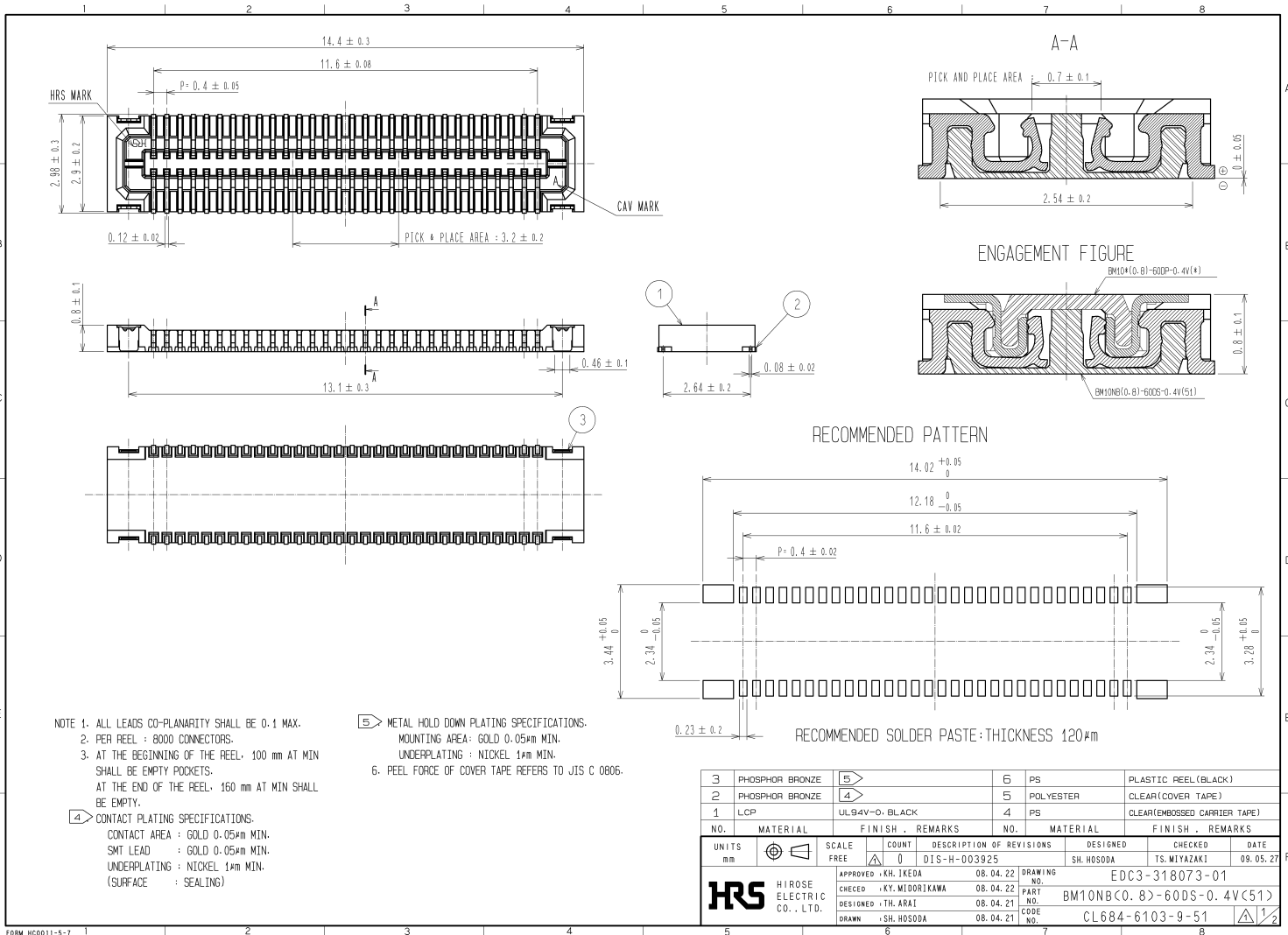
For any questions, you can email us directly:

sales@integrated-circuit.com

2010/05/15 03:11:48 CAROL, TRIBBLE

DRAWING FOR REFERENCE: This is subject to change without notice

APPLICABLE STANDARD				
RATING	OPERATING TEMPERATURE RANGE	-35°C TO +85°C (NOTES 1)	STORAGE TEMPERATURE RANGE	-10°C TO +60°C
	VOLTAGE	30V AC	APPLICABLE CONNECTOR	BM10*(0.8)-60DP-0.4V(*)
	CURRENT	0.3A		
SPECIFICATIONS				
ITEM	TEST METHOD	REQUIREMENTS	QT	AT
CONSTRUCTION				
GENERAL EXAMINATION	CONFIRMED VISUALLY AND BY MEASURING INSTRUMENT.	ACCORDING TO DRAWING.	X	X
MARKING	CONFIRMED VISUALLY.		X	X
ELECTRIC CHARACTERISTICS				
CONTACT RESISTANCE	20mV AC OR LESS 1kHz, 1mA.	100mΩ MAX.	X	-
INSULATION RESISTANCE	100V DC.	50MΩ MIN.	X	-
VOLTAGE PROOF	100V AC FOR 1 min.	NO FLASHOVER OR BREAKDOWN.	X	-
MECHANICAL CHARACTERISTICS				
INSERTION AND WITHDRAWAL FORCES	MEASURED BY APPLICABLE CONNECTOR.	INSERTION FORCE 59.5N MAX WITHDRAWAL FORCE 11.7N MIN	X	-
MECHANICAL OPERATION	10 TIMES INSERTIONS AND WITHDRAWAL.	① CONTACT RESISTANCE: 100mΩ MAX. ② NO DAMAGE, CRACK OR LOOSENESS OF PARTS.	X	-
VIBRATION	FREQUENCY 10 TO 55 TO 10 Hz, APPROX 5min, SINGLE AMPLITUDE 0.75 mm, 10CYCLES, FOR 3 DIRECTIONS.	① NO ELECTRICAL DISCONTINUITY OF 1 μs. ② NO DAMAGE, CRACK OR LOOSENESS OF PARTS.	X	-
SHOCK	490 m/s ² DURATION OF PULSE 11 ms AT 3 TIMES FOR 3 DIRECTIONS.	① NO ELECTRICAL DISCONTINUITY OF 1 μs. ② NO DAMAGE, CRACK OR LOOSENESS OF PARTS.	X	-
ENVIRONMENTAL CHARACTERISTICS				
RAPID CHANGE OF TEMPERATURE	TEMPERATURE -55 → +85 °C TIME 30 → 30 min UNDER 5 CYCLES. (RELOCATION TIME TO CHAMBER: WITHIN 2 ~3 MIN)	① CONTACT RESISTANCE: 100mΩ MAX. ② INSULATION RESISTANCE: 50MΩ MIN. ③ NO DAMAGE, CRACK OR LOOSENESS OF PARTS.	X	-
DAMP HEAT (STEADY STATE)	EXPOSED AT 40 ± 2 °C, 90 TO 95 %, 96 h.	① CONTACT RESISTANCE: 100mΩ MAX. ② INSULATION RESISTANCE: 25MΩ MIN. ③ NO DAMAGE, CRACK OR LOOSENESS OF PARTS.	X	-
SULPHUR DIOXIDE	EXPOSED IN 25 PPM FOR 96h, 25°C, 75%. (REFER TO JIS C 60068)	① CONTACT RESISTANCE: 100mΩ MAX. ② NO DAMAGE, CRACK OR LOOSENESS OF PARTS.	X	-
COUNT	DESCRIPTION OF REVISIONS	DESIGNED	CHECKED	DATE
1	DIS-H-003927	SH. HOSODA	TS. MIYAZAKI	09.06.16
REMARKS		APPROVED	KH. IKEDA	08.04.22
NOTE1: INCLUDE THE TEMPERATURE RISING BY CURRENT		CHECKED	KY. MIDORIKAWA	08.04.22
		DESIGNED	TH. ARAI	08.04.21
Unless otherwise specified, refer to JIS C 5402 and IEC 60512		DRAWN	SH. HOSODA	08.04.21
Note QT:Qualification Test AT:Assurance Test X:Applicable Test		DRAWING NO.		ELC4-318073-01
	SPECIFICATION SHEET	PART NO.	BM10NB(0.8)-60DS-0.4V(51)	
	HIROSE ELECTRIC CO., LTD.	CODE NO.	CL684-6103-9-51	1/1

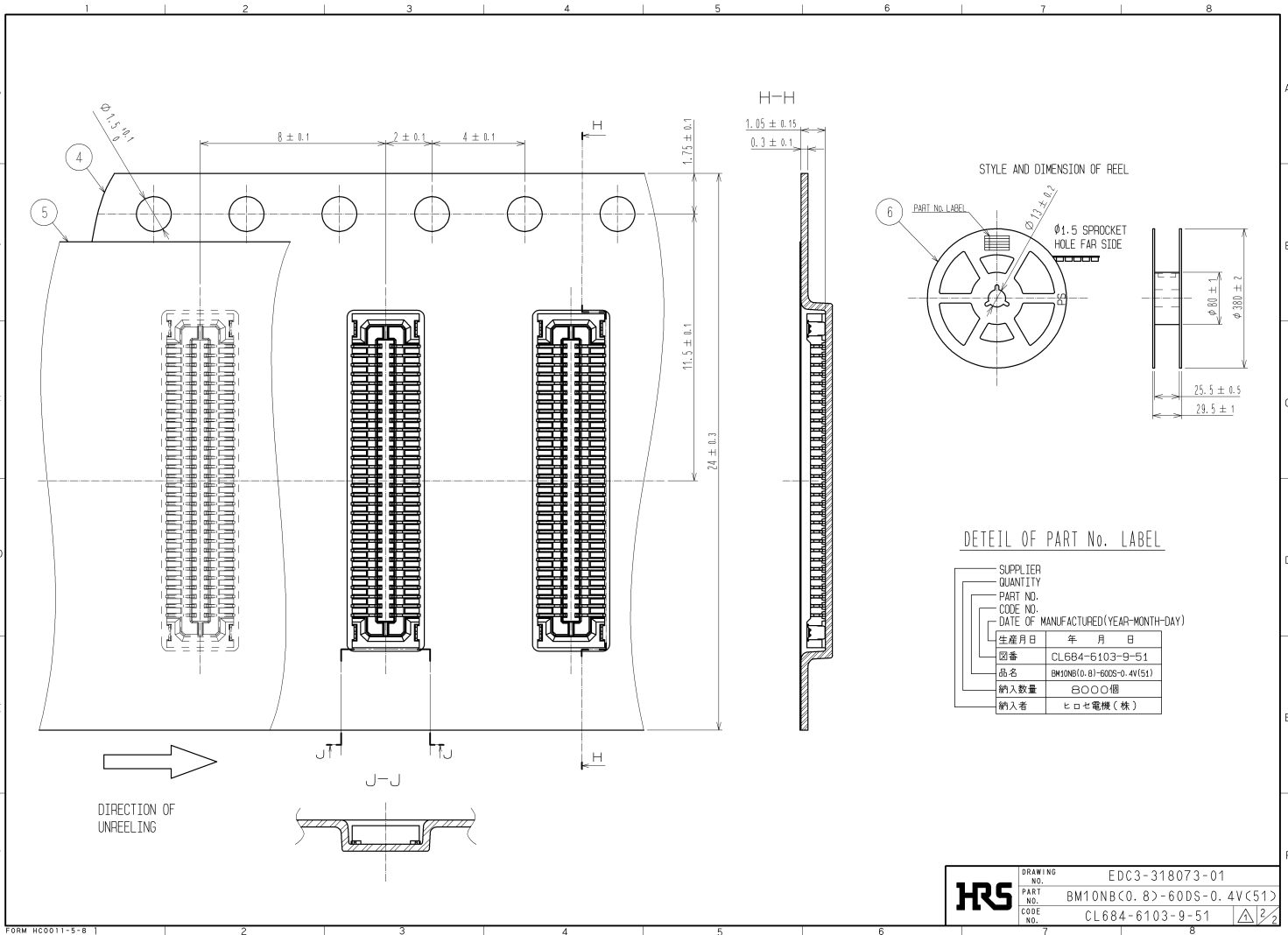


- NOTE 1. ALL LEADS CO-PLANARITY SHALL BE 0.1 MAX.
 2. PER REEL : 8000 CONNECTORS.
 3. AT THE BEGINNING OF THE REEL, 100 mm AT MIN SHALL BE EMPTY POCKETS.
 AT THE END OF THE REEL, 160 mm AT MIN SHALL BE EMPTY.
 4 CONTACT PLATING SPECIFICATIONS.
 CONTACT AREA : GOLD 0.05μm MIN.
 SMT LEAD : GOLD 0.05μm MIN.
 UNDERPLATING : NICKEL 1μm MIN.
 (SURFACE : SEALING)
- 5 METAL HOLD DOWN PLATING SPECIFICATIONS.
 MOUNTING AREA: GOLD 0.05μm MIN.
 UNDERPLATING : NICKEL 1μm MIN.
 6. PEEL FORCE OF COVER TAPE REFERS TO JIS C 0806.

3	PHOSPHOR BRONZE	5	PS	PLASTIC REEL (BLACK)									
2	PHOSPHOR BRONZE	4	POLYESTER	CLEAR (COVER TAPE)									
1	LCP	UL94V-0, BLACK	4	PS	CLEAR (EMBOSSED CARRIER TAPE)								
NO.	MATERIAL	FINISH	REMARKS	NO.	MATERIAL	FINISH	REMARKS						
UNITS	mm	SCALE	FREE	COUNT	0	DESCRIPTION OF REVISIONS	DIS-H-003925	DESIGNED	SH. HOSODA	CHECKED	TS. MIYAZAKI	DATE	09.05.27
HRS HIROSE ELECTRIC CO., LTD.		APPROVED	• KH. IKEDA	08.04.22	DRAWING NO.	EDC3-318073-01							
		CHECKED	• KY. MIDORIKAWA	08.04.22	PART NO.	BM10NB(0.8)-60DS-0.4V(51)							
		DESIGNED	• TH. ARAI	08.04.21	CODE NO.	CL684-6103-9-51							
		DRAWN	• SH. HOSODA	08.04.21									

2010/05/15 03:11:50 CAROL. TRIBBLE

DRAWING FOR REFERENCE: This is subject to change without notice



HRS	DRAWING NO. EDC3-318073-01
	PART NO. BM10NB(0.8)-60DS-0.4V(51)
	CODE NO. CL684-6103-9-51