



Excellent Integrated System Limited

Stocking Distributor

Click to view price, real time Inventory, Delivery & Lifecycle Information:

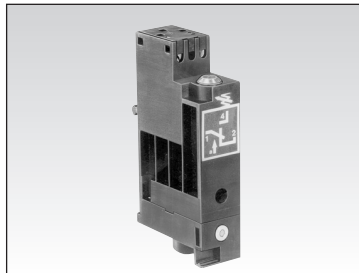
[Crouzet USA](#)
[81513530](#)

For any questions, you can email us directly:

sales@integrated-circuit.com

Intrinsically safe pressure switches EEx ia II C T6

LCIE approval
no. 93 C 6015X



- Conform to the Low Voltage Directive
- Can be used without enclosure according to IEC 664-1 pollution group III

Part numbers

Fixing		81 513 530	
		DIN rail 35 mm	
		EN 50022	
Function	control	pressure	
Version	manual override	with	

Symbol



Characteristics

Permitted fluids	air, inert gases and liquids		•
Adjustable switching pressure (* set at 0.3)	bar	2 to 8	
Hysteresis	at 1 bar	0.5	
	at 2 bars	0.6	
	at 4 bars	0.8	
	at 6 bars	1	
Pressure indicator			•
Temperature	operating	° C	- 10 + 50
	of fluid	° C	- 10 + 30
Mechanical life	operations	10 ⁶	
Maximum voltage	V	60 Vdc	
Construction	POM, brass, AU4G		•
Weight	g	48	
Degree of protection	IEC 529	IP 20	

Pneumatic connections

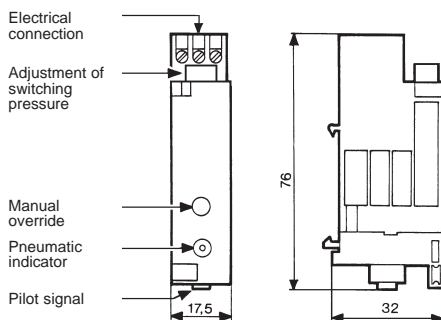
	Push-in connection for semi-rigid tubing		•
Connection	∅ 4 mm (NFE 49100)		•
	Tapped holes 1/8 BSP		—

Electrical connections

	Integral electrical connections		•
Screw terminals	number	3 (1-2-4)	
Wire cross-section	mm ²	0.75	
Terminal capacity	mm ²	3	

Dimensions

81 513 530



Other information

On request :
 - Low pressure version from 0.2 to 1.2 bars
 - Vacuum version adjustable from -0.3 to -1 bar

To order, specify :

Standard products

1 Reference

Example : Intrinsically safe pressure switches - 81 513 530

Products and specifications subject to change without notice.
 Consult factory for application assistance.