

## Excellent Integrated System Limited

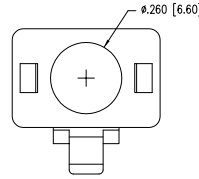
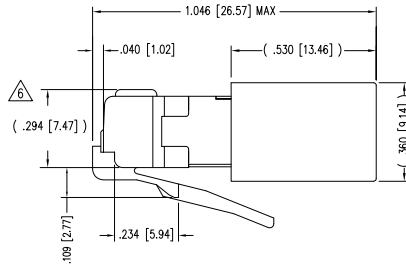
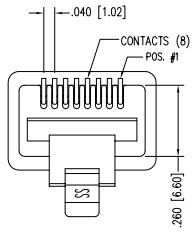
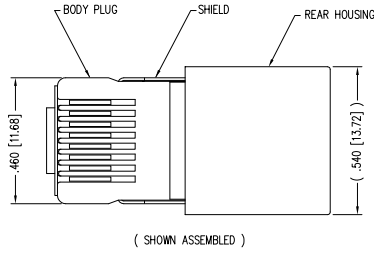
Stocking Distributor

Click to view price, real time Inventory, Delivery & Lifecycle Information:

[Bel Fuse Inc.](#)  
[940-SP-360808-A10](#)

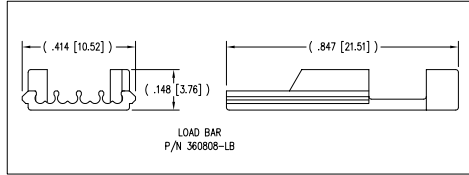
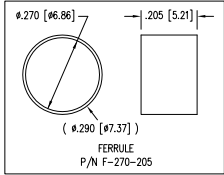
For any questions, you can email us directly:  
[sales@integrated-circuit.com](mailto:sales@integrated-circuit.com)

DATE	REV	EON	APP'D. BY
5-6-03	D1	6351	JMB
2-9-11	D2	9125	SMN
5-23-12	D3	9475	SMN
1-7-15	D4	10172	TRM

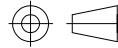


- NOTES:
- 1- PLUG KIT CONSISTS OF :  
 PRE-INSERTED PLUG HOUSING & SHIELD  
 LOAD BAR  
 FERRULE
  - 2- MATERIALS :  
 FRONT HOUSING PLASTIC : CLEAR POLYCARBONATE, UL 94-V0  
 LOAD BAR : CLEAR POLYCARBONATE, UL 94-V0  
 SHIELD : TIN PLATED BRASS  
 CONTACTS : PHOSPHOR BRONZE, SELECTIVE GOLD PLATING  
 FERRULE : NICKEL OR TIN PLATED BRASS
  - 3- CONTACTS TERMINATE STRANDED CONDUCTORS UP TO .037 [0.94] OUTSIDE DIAMETER OF INSULATION.
  - 4- FOR PLUG SPECIFICATION SEE PRO21-01.
  - 5- DIMENSIONS & TOLERANCES COMPLY WITH TIA-1096 STANDARD
- △ TERMINATED PLUG HEIGHT: .237 [6.02] ±.005 [0.13] ON CABLE

BULK	50 MICRO-INCHES [1.27um]	940-SP-360808-A10
PACKAGE	CONTACT PLATING IN MATING AREA	PART NUMBER



THIRD ANGLE PROJECTION



DO NOT SCALE DRAWING  
 DRAWING IS SUBJECT TO CHANGE WITHOUT NOTICE

DIMENSIONS: INCHES [METRIC]

UNLESS OTHERWISE SPECIFIED  
 TOLERANCES ARE: ±.005 [0.13]  
 ANGLES ARE ± 1°

SHEET NO. 1 OF 1



11118 Susquehanna Trail South  
 Gen Rock, PA 17327-9199  
 (717) 235-7512  
<http://www.stewartconnector.com>

TITLE: 8 X 8 SHIELDED PLUG

THIS DRAWING AND THE SUBJECT MATTER SHOWN THEREON ARE CONFIDENTIAL AND THE PROPERTY OF STEWART CONNECTOR AND SHALL NOT BE REPRODUCED, COPIED, OR USED IN ANY MANNER WITHOUT WRITTEN CONSENT OF STEWART CONNECTOR. THIS PRODUCT MAY BE PROTECTED BY ONE OR MORE OF THE FOLLOWING US PATENTS: 5628647 6022529 6009265 6524128 7753717 8030863 OTHER PATENTS MAY BE PENDING.

DRN BY:	JAF	DATE:	5-6-03
APP'D BY:	JM	DATE:	5-6-03
DWG NO.:	CT360117	REV.:	D4



REV. 1-19-11

2

1

AutoCAD