

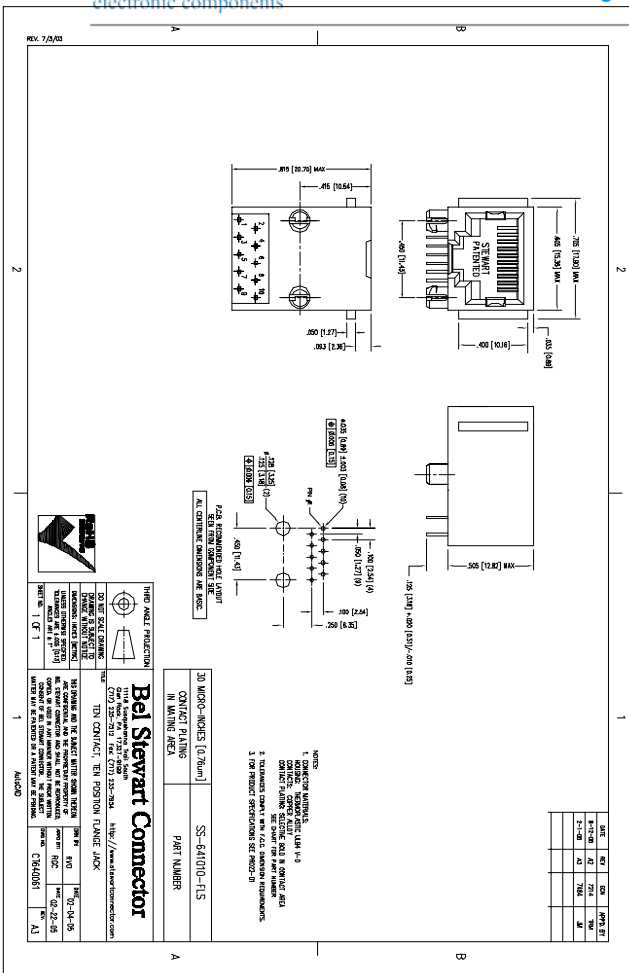
Excellent Integrated System Limited

Stocking Distributor

Click to view price, real time Inventory, Delivery & Lifecycle Information:

[Bel Fuse Inc.](#)
[SS-641010-FLS](#)

For any questions, you can email us directly:
sales@integrated-circuit.com



THIS ANGLE PROJECTION

Bel Stewart Connector

30 MICRO-PINCHES (0.76mm)

CONDUCTIVE PLATING IN MOUNTING HOLES

PART NUMBER SS-641010-FLS

NOTES:
 1. DIMENSIONS UNLESS SPECIFIED IN INCHES
 2. DIMENSIONS IN PARENTHESES ARE IN MILLIMETERS
 3. DIMENSIONS IN PARENTHESES ARE IN MILLIMETERS
 4. DIMENSIONS IN PARENTHESES ARE IN MILLIMETERS
 5. DIMENSIONS IN PARENTHESES ARE IN MILLIMETERS
 6. DIMENSIONS IN PARENTHESES ARE IN MILLIMETERS
 7. DIMENSIONS IN PARENTHESES ARE IN MILLIMETERS
 8. DIMENSIONS IN PARENTHESES ARE IN MILLIMETERS
 9. DIMENSIONS IN PARENTHESES ARE IN MILLIMETERS
 10. DIMENSIONS IN PARENTHESES ARE IN MILLIMETERS

DATE	REV	BY	CHKD	APP'D
8-11-08	01	7741	30	
7-1-08	00	7864	30	

AMC00