

## Excellent Integrated System Limited

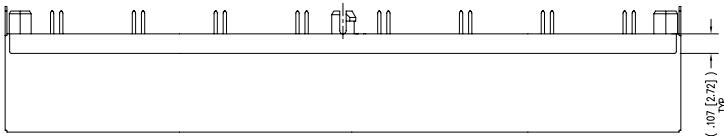
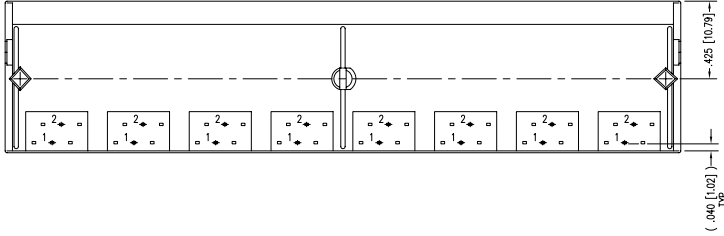
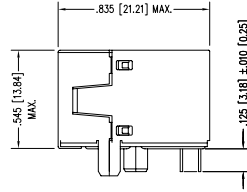
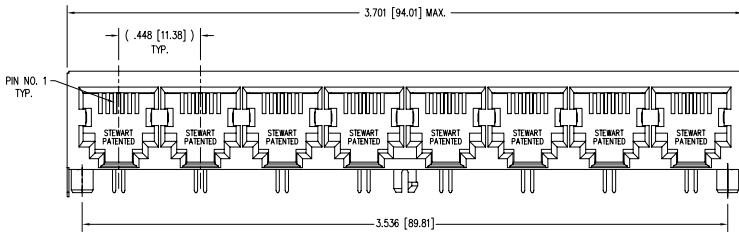
Stocking Distributor

Click to view price, real time Inventory, Delivery & Lifecycle Information:

[Bel Fuse Inc.](#)  
[SS-662608S-NF-A390](#)

For any questions, you can email us directly:  
[sales@integrated-circuit.com](mailto:sales@integrated-circuit.com)

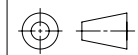
DATE	REV	EDN	APP'D. BY
1-4-08	A0	8331	TRM



- NOTES:  
 1. CONNECTOR MATERIALS:  
 HOUSING: THERMOPLASTIC UL94 V-0  
 CONTACTS/SHIELD: COPPER ALLOY  
 SHIELD PLATING: NICKEL  
 CONTACT PLATING: SELECTIVE GOLD IN CONTACT AREA  
 SEE CHART FOR PART NUMBER  
 2. FOR PRODUCT SPECIFICATIONS SEE PRO22-01.  
 3. DIMENSIONS AND TOLERANCES COMPLY WITH FCC/CFR 47, PART 68.

30 MICRO-INCHES [0.76um]	SS-662608S-NF-A390
CONTACT PLATING IN MATING AREA	PART NUMBER

THIRD ANGLE PROJECTION



DO NOT SCALE DRAWING	TITLE:
DRAWING IS SUBJECT TO CHANGE WITHOUT NOTICE	8 PORT PCB HARM JK PAC, NON-FLANGED, EMI-RFI SHIELDED ESD GROUNDED, 2.5 MM CONTACT/SHIELD CLEARANCE IN REAR
DIMENSIONS: INCHES [METRIC]	THIS DRAWING AND THE SUBJECT MATTER SHOWN THEREON ARE CONFIDENTIAL AND THE PROPRIETARY PROPERTY OF BEL STEWART CONNECTOR AND SHALL NOT BE REPRODUCED, COPIED, OR USED IN ANY MANNER WITHOUT PRIOR WRITTEN CONSENT OF BEL STEWART CONNECTOR. THE SUBJECT MATTER MAY BE PATENTED OR A PATENT MAY BE PENDING.
UNLESS OTHERWISE SPECIFIED TOLERANCES ARE ±.005 [0.13] ANGLES ARE ± 1°	DRN BY: TRM DATE: 1-4-08
SHEET NO. 1 OF 2	APP'D BY: DHG DATE: 1-4-08
	DWG NO. CT660157 REV. A0

## Bel Stewart Connector

11119 Susquehanna Trail South  
 Glen Rock, PA 17327-9199  
 (717) 235-7512 Fax: (717) 235-7954 <http://www.stewartconnector.com>



REV. 6/5/05

2

1

AutoCAD

2

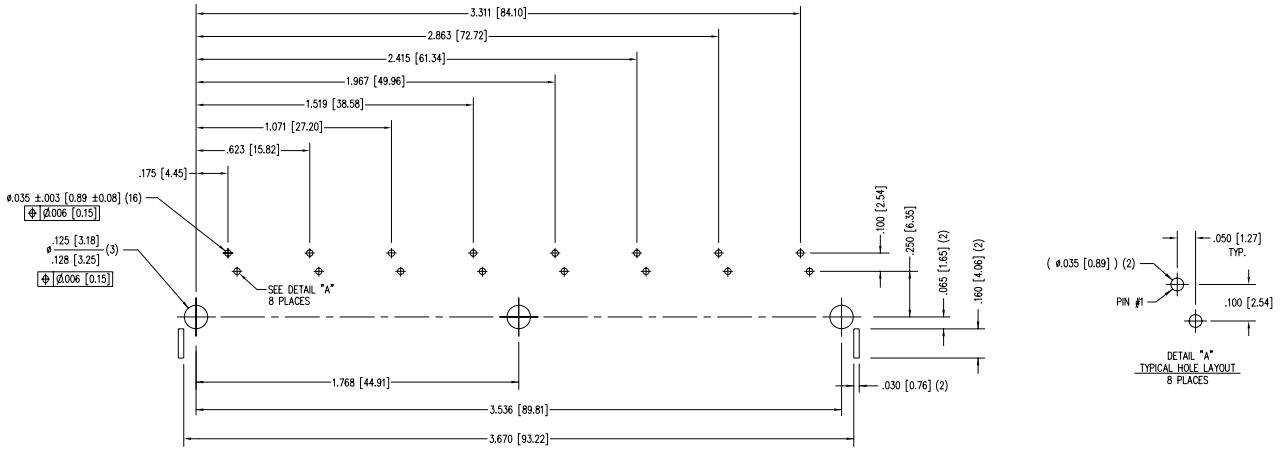
1

B

B

A

A



P.C.B. RECOMMENDED HOLE LAYOUT  
 SEEN FROM COMPONENT SIDE  
 ALL CENTERLINE DIMENSIONS ARE BASIC.

REV. 6/5/05

2

1

AutoCAD

THIRD ANGLE PROJECTION		<b>Bel Stewart Connector</b>	
		11119 Susquehanna Trail South Glen Rock, PA 17327-9199 (717) 235-7512 Fax: (717) 235-7954 <a href="http://www.stewartconnector.com">http://www.stewartconnector.com</a>	
DO NOT SCALE DRAWING		TITLE: 8 PORT PCB HARM JK PAC, NON-FLANGED, EMI-RFI SHIELDED	
DRAWING IS SUBJECT TO CHANGE WITHOUT NOTICE		ESD GROUNDING, 2.5 MM CONTACT/SHIELD CLEARANCE IN REAR	
DIMENSIONS: INCHES [METRIC]		DRN BY: TRM DATE: 1-4-08	
UNLESS OTHERWISE SPECIFIED TOLERANCES ARE $\pm .005 [0.13]$ ANGLES ARE $\pm 1^\circ$		APPR BY: DHG DATE: 1-4-08	
SHEET NO. 2 OF 2		DWC NO. CT660157 REV. A0	

