

## Excellent Integrated System Limited

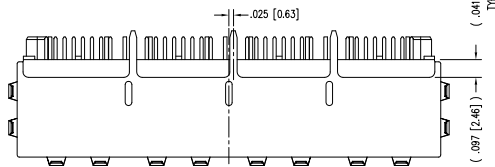
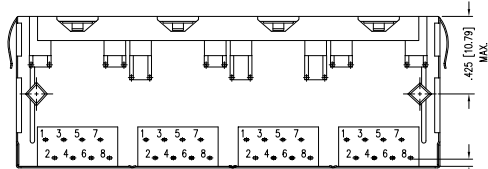
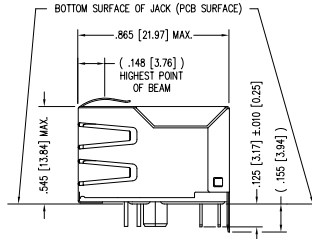
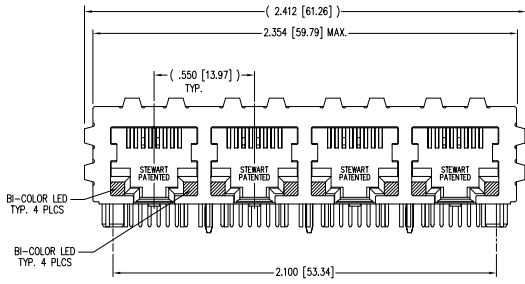
Stocking Distributor

Click to view price, real time Inventory, Delivery & Lifecycle Information:

[Bel Fuse Inc.](#)  
[SS-748804SC5-BB-PG4-BZ](#)

For any questions, you can email us directly:  
[sales@integrated-circuit.com](mailto:sales@integrated-circuit.com)

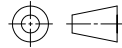
DATE	REV	ECN	APP'D. BY
1-23-06	A0	7463	TRM
6-21-12	A1	9520	SMN
1-19-15	A2	10214	TRM



- NOTES:
- CONNECTOR MATERIALS:  
 HOUSING: THERMOPLASTIC UL94 V-0  
 CONTACT/SHIELD: COPPER ALLOY  
 SHIELD PLATING: NICKEL OR TIN  
 CONTACT PLATING: SELECTIVE GOLD IN CONTACT AREA  
 SEE CHART FOR PART NUMBER
  - FOR PRODUCT SPECIFICATION SEE PRO22-01
  - TOLERANCES COMPLY WITH F.C.C. DIMENSION REQUIREMENTS.
  - THE SUGGESTED PANEL OPENING IS INTENDED TO GIVE USER THE ABILITY TO HAVE REASONABLE JACK/PANEL CLEARANCES, YET MAINTAIN GROUNDING CAPABILITY. THESE VARIABLES CAN BE ADJUSTED IN EITHER DIRECTION BUT MAY CARRY SOME CONSEQUENCES IN THE FORM OF LOWER MATING FORCES OR TIGHTER ASSEMBLY TOLERANCES.
  - PRODUCT DESIGNED FOR CATEGORY 5 APPLICATIONS.

30 MICRO-INCHES [0.76um]	SS-748804SC5-BB-PG4-BZ
CONTACT PLATING IN MATING AREA	PART NUMBER

THIRD ANGLE PROJECTION



DO NOT SCALE DRAWING  
 DRAWING IS SUBJECT TO CHANGE WITHOUT NOTICE

DIMENSIONS: INCHES [METRIC]

UNLESS OTHERWISE SPECIFIED  
 TOLERANCES ARE ±.005 [0.13]  
 ANGLES ARE ± 1°

SHEET NO. 1 OF 2

**stewart**  
CONNECTOR  
a bel group

1118 Susquehanna Trail South  
 Gen Rock, PA 17327-9199  
 (717) 235-7512  
<http://www.stewartconnector.com>

TITLE: 4 PORT HARMONICA JACK, EMI-RFI ENHANCED SHIELD  
 ESD GROUNDED WITH PANEL GROUNDS

DRW BY: TRM	DATE: 1-23-06
APP'D BY: DHG	DATE: 1-23-06
DWG NO. CT740017	REV. A2

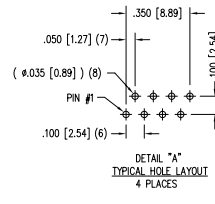
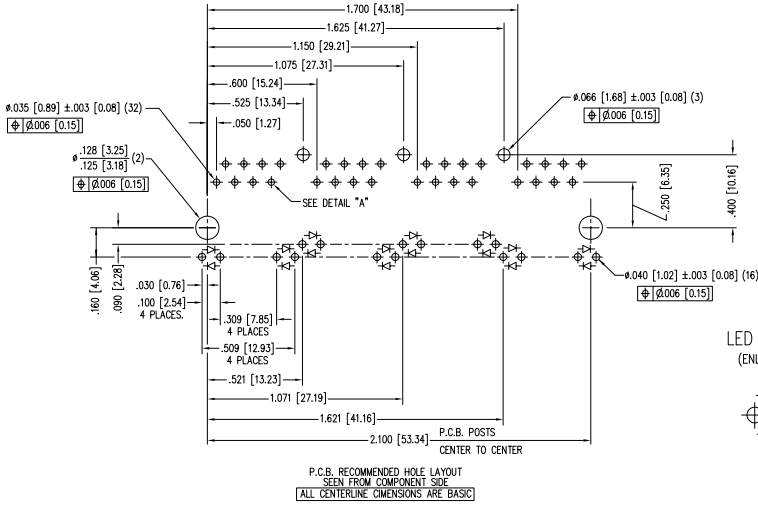


2

1

B

B



LED POLARITY  
(ENLARGED VIEW)

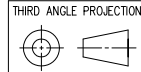
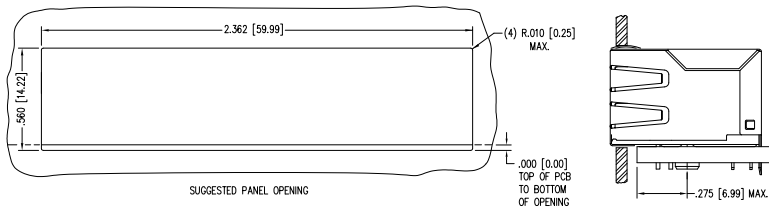


LED SPECIFICATION			
BI-COLOR LED	WAVELENGTH	FORWARD V (MAX)	* (TYP)
RED	625 nm	2.5 V	2.0 V
RED/GREEN	565 nm	2.5 V	2.2 V

\*WITH A FORWARD CURRENT OF 20 mA (TYP)

A

A



11118 Susquehanna Trail South  
Gen Rock, PA 17327-9199  
(717) 235-7512  
<http://www.stewartconnector.com>

DO NOT SCALE DRAWING  
DRAWING IS SUBJECT TO CHANGE WITHOUT NOTICE

TITLE: 4 PORT HARMONICA JACK, EMI-RFI ENHANCED SHIELD  
ESD GROUNDED WITH PANEL GROUNDS

DIMENSIONS: INCHES (METRIC)  
UNLESS OTHERWISE SPECIFIED  
TOLERANCES ARE ±.005 [0.13]  
ANGLES ARE ± 1°

THIS DRAWING AND THE SUBJECT MATTER SHOWN THEREON ARE CONFIDENTIAL AND THE PROPRIETARY PROPERTY OF STEWART CONNECTOR AND SHALL NOT BE REPRODUCED, COPIED, OR USED IN ANY MANNER WITHOUT PRIOR WRITTEN CONSENT OF STEWART CONNECTOR. THIS PRODUCT MAY BE PROTECTED BY ONE OR MORE OF THE FOLLOWING US PATENTS: 579142 621720 636819 641626 650097 687722 694507 704500 708009 758963 768650 OTHER PATENTS MAY BE PENDING.

DRN BY: TRM DATE 1-23-06  
APPD BY: DHG DATE 1-23-06

SHEET NO. 2 OF 2

DWG NO. CT740017 REV. A2



2

1

AutoCAD