

Excellent Integrated System Limited

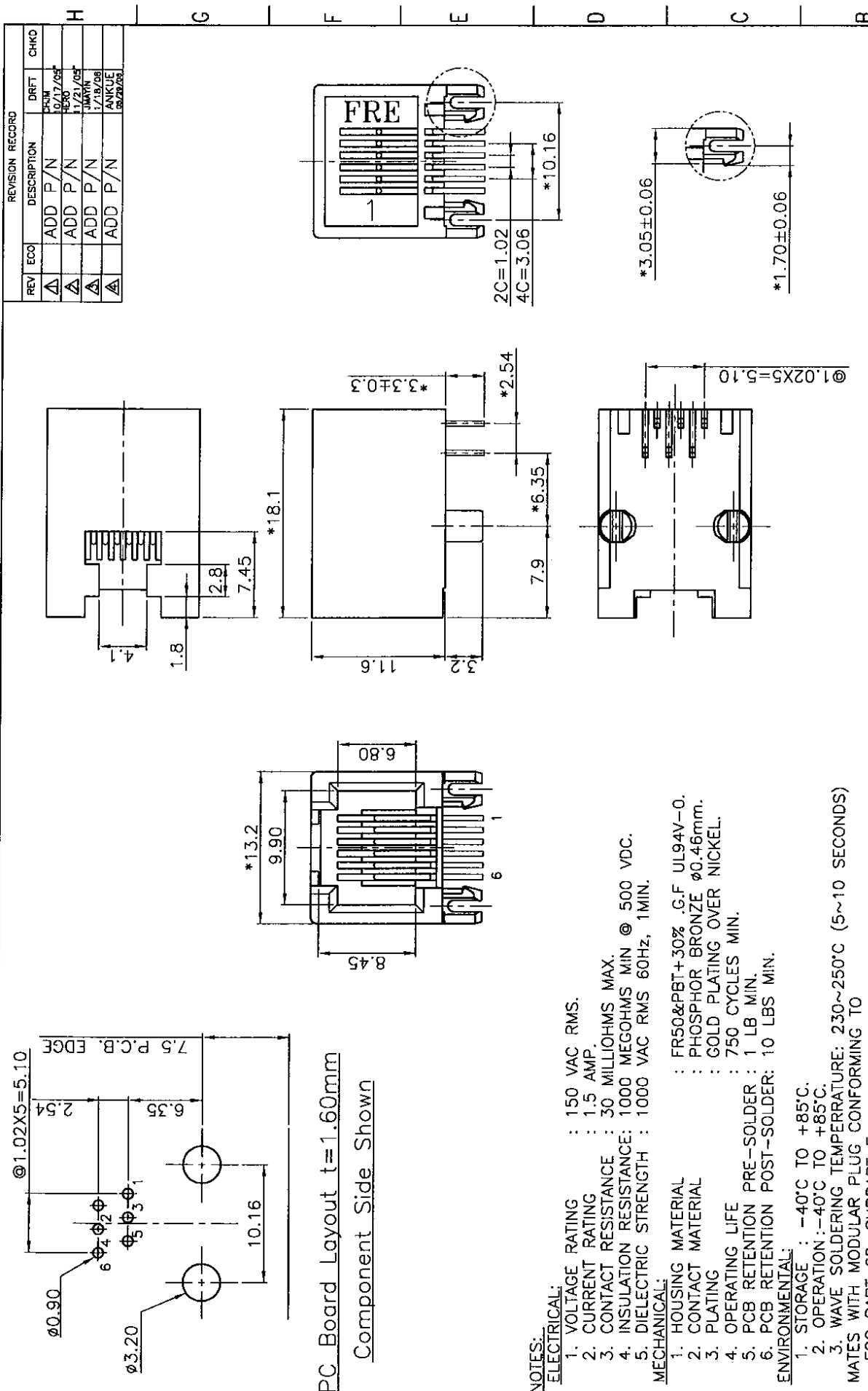
Stocking Distributor

Click to view price, real time Inventory, Delivery & Lifecycle Information:

[Pulse Electronics Corporation](#)
[E5362-3006G2-L](#)

For any questions, you can email us directly:

sales@integrated-circuit.com



PC Board Layout t=1.60mm
 Component Side Shown

- NOTES:**
- ELECTRICAL:**
- VOLTAGE RATING : 150 VAC RMS.
 - CURRENT RATING : 1.5 AMP.
 - CONTACT RESISTANCE : 30 MILLIOHMS MAX.
 - INSULATION RESISTANCE: 1000 MEGOHMS MIN @ 500 VDC.
 - DIELECTRIC STRENGTH : 1000 VAC RMS 60Hz, 1MIN.
- MECHANICAL:**
- HOUSING MATERIAL : FR50&PBT+30% G.F UL94V-0.
 - CONTACT MATERIAL : PHOSPHOR BRONZE ϕ 0.46mm.
 - PLATING : GOLD PLATING OVER NICKEL.
 - OPERATING LIFE : 750 CYCLES MIN.
 - PCB RETENTION PRE-SOLDER : 1 LB MIN.
 - PCB RETENTION POST-SOLDER: 10 LBS MIN.
- ENVIRONMENTAL:**
- STORAGE : -40°C TO +85°C.
 - OPERATION : -40°C TO +85°C.
 - WAVE SOLDERING TEMPERATURE: 230~250°C (5~10 SECONDS)
- MATES WITH MODULAR PLUG CONFORMING TO
 FCC PART 68, SUBPART F.
 CUL FILE NO. E163191
 ROHS PART NUMBER: E536X-300XXX-L

- 1- 3.0" 2- 6.0" 3- 15.0"
 2- 2CJ
 4- 4C
 6- 6C
- MATERIAL OF HS'G :
- 0G-PBT BK.
 - 4G-FR50 BK
 - △ 4G-PBT+30% G.F. WHITE (PBT NATURAL COLOR)
 - ▲ 4G-PBT+30% G.F. PANTON RED 196C
 - ▲ 4G-PBT+30% G.F. PANTON GREEN 7479C
 - ▲ 4G-PBT+30% G.F. PANTON YELLOW 114C

REVISION RECORD				
REV	ECO	DESCRIPTION	DRFT	CHKD
△		ADD P/N	CSW	
△		ADD P/N	10/17/05F	
△		ADD P/N	HERO	
△		ADD P/N	1/21/05F	
△		ADD P/N	JIMMYN	
△		ADD P/N	1/19/06	
△		ADD P/N	ANKUE	
△		ADD P/N	09/20/08	

DATE: 04/12/05		DATE: 04/12/05		DATE: 04/12/05	
DRTO CNO	CHD	APPLY	MATERIAL	TITLE	
INFO	APPLY	MATERIAL	FULL RISE ELECTRONIC CO., LTD		
TELEANCES EXCEPT AS NOTED	APPLY	MATERIAL	11.5mm SIDE PCB JACK 6P		
MM	APPLY	MATERIAL	DRAWING NO. GES3022-LC		
.0 ±.02	APPLY	MATERIAL	/PART NO. SEE NOTE		SIZE REV
.00 ±.015	APPLY	MATERIAL	DO NOT SCALE DRAWING		A3 4
.000 ±.0075	APPLY	MATERIAL	SHEET 1 OF 1		
ANGLES ± 0.5	APPLY	MATERIAL			
THIRD ANGLE PROJECTION	APPLY	MATERIAL			
SCALE : 3 : 1	APPLY	MATERIAL			