

Excellent Integrated System Limited

Stocking Distributor

Click to view price, real time Inventory, Delivery & Lifecycle Information:

[Pulse Electronics Corporation](#)
[W3022](#)

For any questions, you can email us directly:

sales@integrated-circuit.com

1.88-1.93 GHz DECT Ceramic Antenna

Ground cleared under antenna, clearance area 10.80 x 6.25 mm. *Pulse Part Number: W3022*



Features

- Omnidirectional radiation
- Low profile
- Compact size W x L x H (10 x 3.2 x 2 mm)
- Low weight (310 mg)
- Lead free materials
- Fully SMD compatible
- Lead free soldering compatible
- Tape and reel packing
- RoHS Compliant Product

Applications

- DECT bands (European + US)
- 1.88-1.93 GHz

Electrical specifications @ +25 °C

Note: Electrical characteristics depend on test board (GP) size and antenna positioning on GP and Ground Clearance area size.

DECT 1.88-1.93 GHz

Typical performance (testboard size 80 x 37 mm, PWB ground clearance area 10.80 x 6.25 mm)

Frequency Range [MHz]	Linear Max Gain [dBi]	Efficiency [%] / [dB]	Return Loss min. [dB]	Impedance [Ω]	Operating Temperature [°C]
1880 – 1930	2.5 (peak) 2 (band edges)	80 / -1 (peak) 70 / -1.55 (band edges)	-12	50	-40 to +85

Pulse Finland Oy

Takatie 6
 90440 Kempele, Finland
 Tel: +358 207 935 500
 Fax: +358 207 935 501
www.pulseeng.com/antennas

1.88-1.93 GHz DECT Ceramic Antenna

Ground cleared under antenna, clearance area 10.80 x 6.25 mm

Typical Electrical Characteristics (T=25 °C)

Measured on the 80 x 37 mm test board

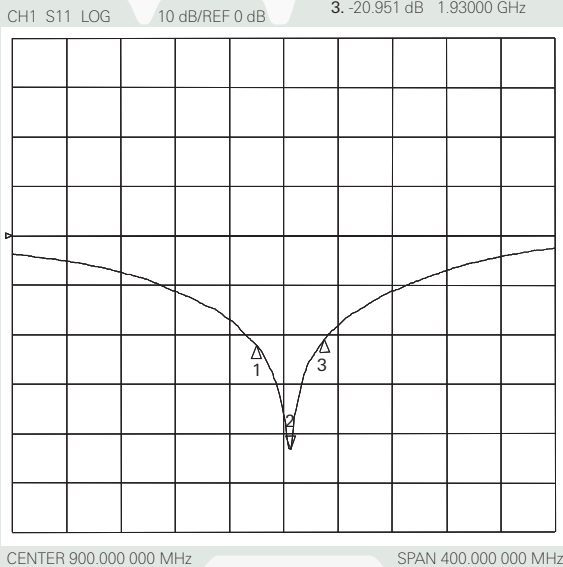
Typical Return Loss S11/ impedance

Ceramic Chip Antenna

24 Aug 2006 12:30:11

CH1Markers

- 1. -22.172 dB 1.88000 GHz
- 2. -43.163 dB 1.905000000 MHz
- 3. -20.951 dB 1.93000 GHz

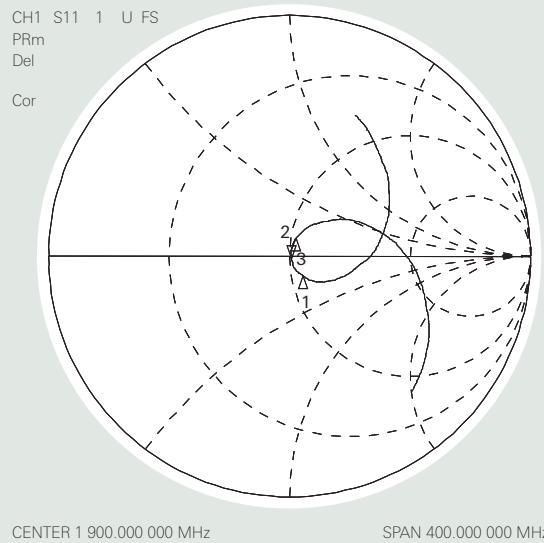


Ceramic Chip Antenna

24 Aug 2006 12:31:19

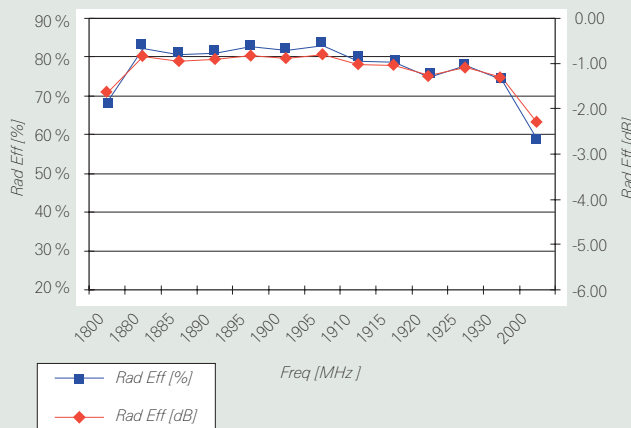
CH1Markers

- 1. 55.0384 Ω -9.0332 Ω 1.88000 GHz
- 2. 50.680 Ω -998.05 m 83.709 pF 1.905000000 MHz
- 3. 52.143 Ω 7.8008 Ω 1.93000 GHz

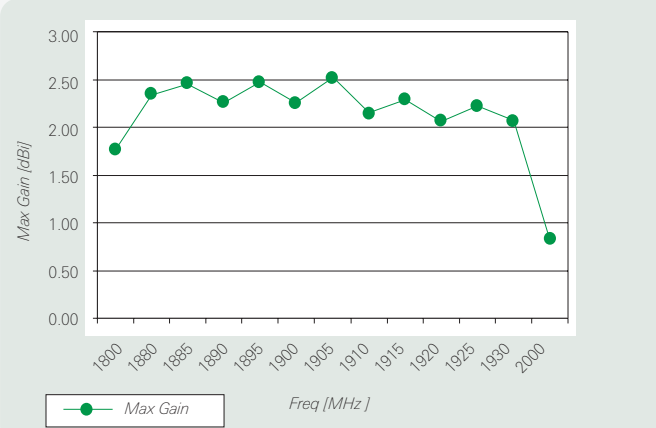


Free space efficiency and maximum gain

DECT 1880-1930 MHz



DECT 1880-1930 MHz

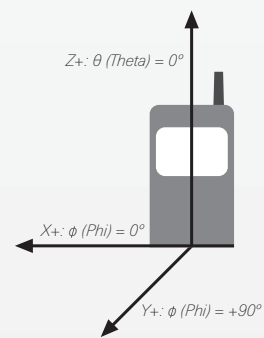
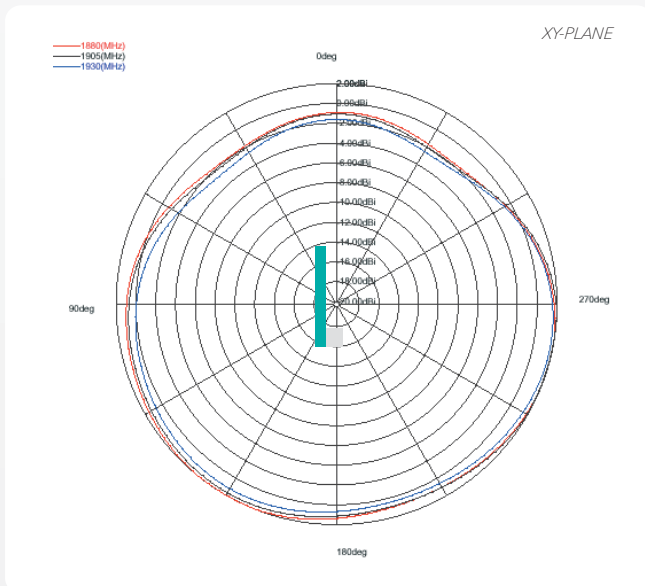
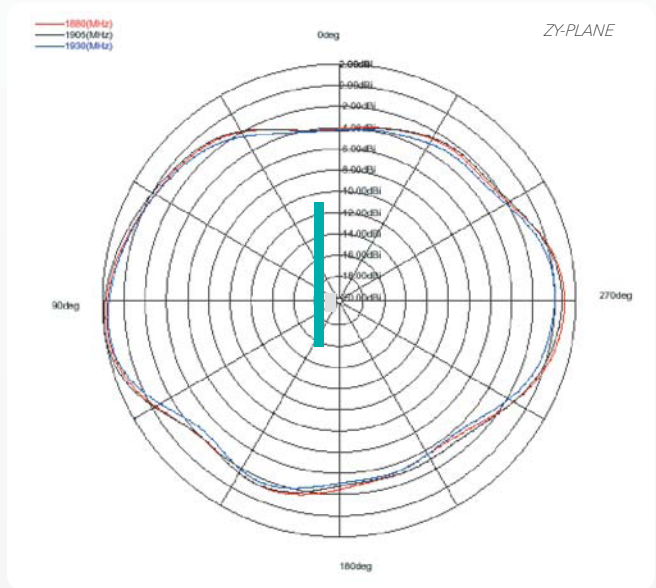
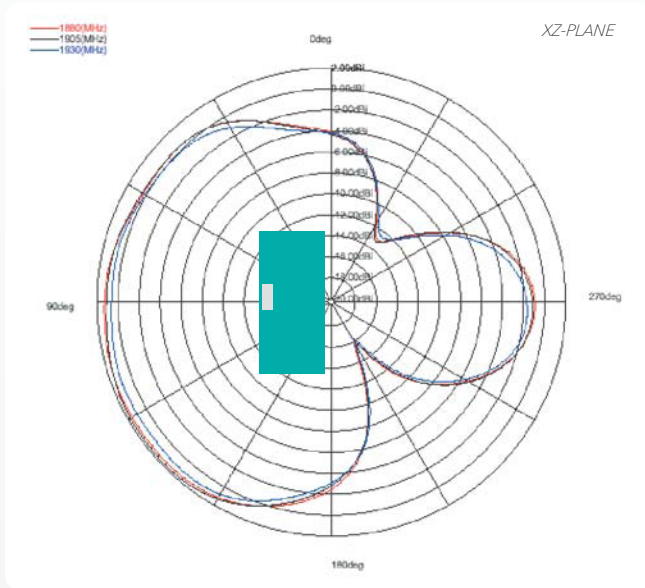


W3022 Datasheet version 2.2. 1.88-1.93 GHz DECT Ceramic Antenna. Confidential. Preliminary (07/08)

1.88-1.93 GHz DECT Ceramic Antenna

Ground cleared under antenna, clearance area 10.80 x 6.25 mm

Typical Free Space Radiation Patterns



Pulse Finland Oy

Takatie 6
 90440 Kemppele, Finland
 Tel: +358 207 935 500
 Fax: +358 207 935 501
www.pulseeng.com/antennas