

Excellent Integrated System Limited

Stocking Distributor

Click to view price, real time Inventory, Delivery & Lifecycle Information:

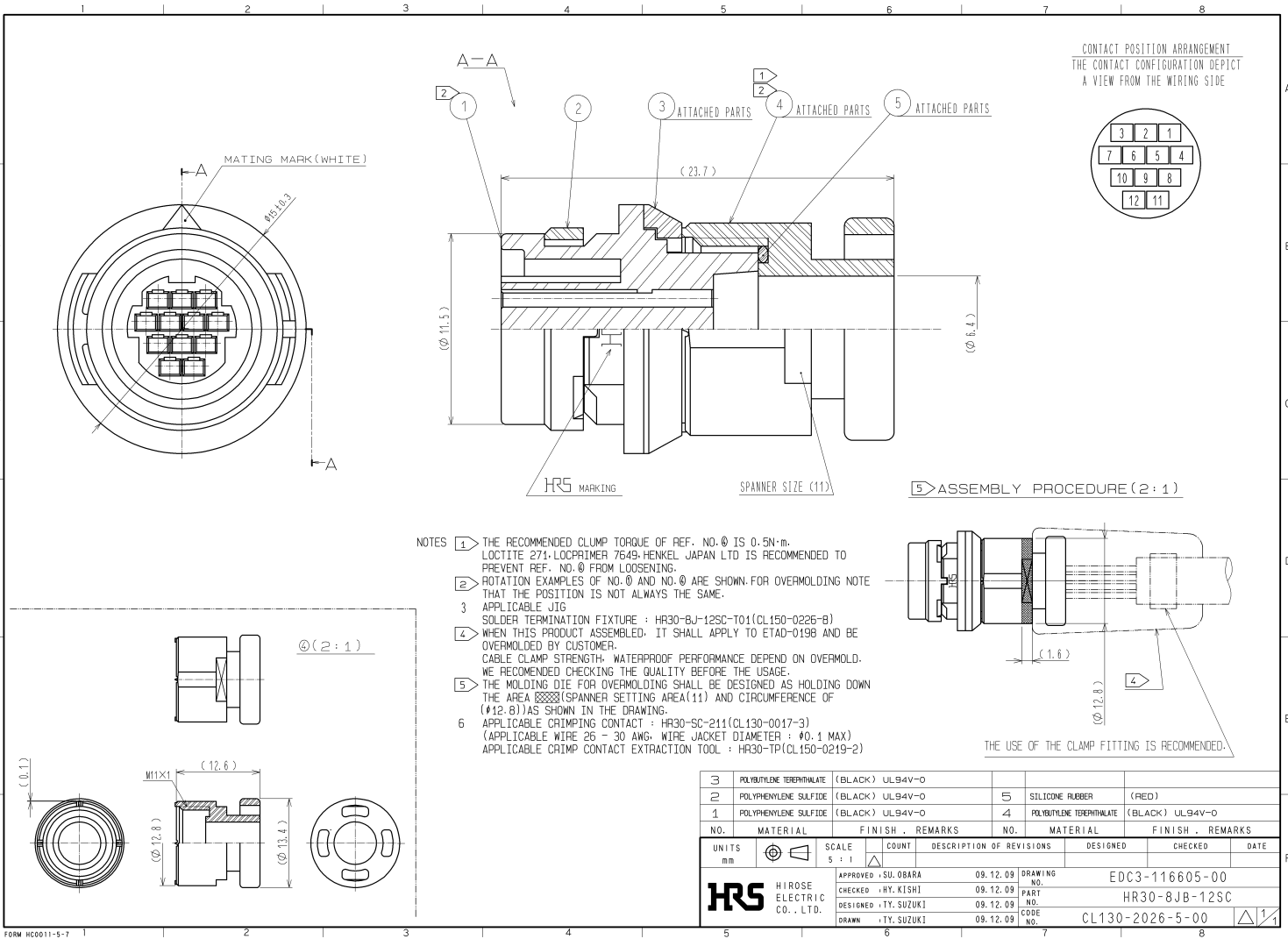
[Hirose Electric Co Ltd](#)
[HR30-8JB-12SC](#)

For any questions, you can email us directly:
sales@integrated-circuit.com

2010/04/14 01:55:07 CAROL TRIBBLE

DRAWING FOR REFERENCE: This is subject to change without notice

APPLICABLE STANDARD						
RATING	OPERATING TEMPERATURE RANGE	-25 °C TO +85 °C	STORAGE TEMPERATURE RANGE	-10 °C TO +60 °C		
	VOLTAGE	AC 30 V , DC 42 V				
	CURRENT	2 A	APPLICABLE CABLE			
SPECIFICATIONS						
ITEM	TEST METHOD		REQUIREMENTS		QT	AT
CONSTRUCTION						
GENERAL EXAMINATION	VISUALLY AND BY MEASURING INSTRUMENT.		ACCORDING TO DRAWING.		X	X
MARKING	CONFIRMED VISUALLY.				X	X
ELECTRIC CHARACTERISTICS						
CONTACT RESISTANCE	CONTACT SHALL BE MEASURED AT DC 1 A		15 mΩ MAX.		X	—
INSULATION RESISTANCE	100 V DC.		1000 MΩ MIN.		X	X
VOLTAGE PROOF	300 V AC. FOR 1 min.		NO FLASHOVER OR BREAKDOWN.		X	X
MECHANICAL CHARACTERISTICS						
CONTACT INSERTION AND WITHDRAWAL FORCES	φ0.53±0.003 BY STEEL GAUGE.		INSERTION AND WITHDRAWAL FORCES : 0.15 N MIN.		X	—
CONNECTOR INSERTION AND WITHDRAWAL FORCES	MEASURED BY APPLICABLE CONNECTOR.		INSERTION AND WITHDRAWAL FORCES LOCKING DEVICE WITH UNLOCK : — N MAX. LOCKING DEVICE WITH LOCK : 50 N MAX.		X	—
MECHANICAL OPERATION	1000 TIMES INSERTIONS AND EXTRACTIONS.		CONTACT RESISTANCE: 30 mΩ MAX.		X	—
VIBRATION	FREQUENCY: 10 → 55 → 10 (Hz) (1CYC,5min), SINGLE AMPLITUDE 0.75 mm, AT 10 CYC, FOR 3 DIRECTIONS.		① NO ELECTRICAL DISCONTINUITY OF 10 μs. ② NO DAMAGE, CRACK AND LOOSENESS, OF PARTS.		X	—
SHOCK	490 m/s ² DIRECTIONS OF PULSE 11 ms AT 3 TIMES FOR 3 DIRECTIONS.		① NO ELECTRICAL DISCONTINUITY OF 10 μs. ② NO DAMAGE, CRACK AND LOOSENESS, OF PARTS.		X	—
CONTACT RETENTION FORCE	APPLYING A PULL FORCE THE WIRE AFTER THE APPLICABLE CRIMPED CONTACT IS ASSEMBLED THE BODY.		20 N MIN.		X	—
ENVIRONMENTAL CHARACTERISTICS						
DAMP HEAT (STEADY STATE)	EXPOSED AT 40 °C, 90 TO 95 %, 96 h.		① INSULATION RESISTANCE: 10 MΩ MIN (AT HIGH HUMIDITY). ② INSULATION RESISTANCE: 100 MΩ MIN (AT DRY). ③ NO DAMAGE. CRACK AND LOOSENESS OF PARTS.		X	—
RAPID CHANGE OF TEMPERATURE	TEMPERATURE -55→ R/T ⁽¹⁾ → +85 → R/T °C TIME 30 → 10 TO 15 → 30 → 10 TO 15 min UNDER 5 CYCLES.		① INSULATION RESISTANCE: 100 MΩ MIN. ② NO DAMAGE. CRACK AND LOOSENESS OF PARTS.		X	—
CORROSION SALT MIST	EXPOSED IN 5 % SALT WATER SPRAY FOR 48 h.		NO HEAVY CORROSION RUIN THE FUNCTION.		X	—
DRY HEAT	EXPOSED AT + 85 °C , 96 h.		NO DAMAGE, CRACK AND LOOSENESS OF PARTS.		X	—
COLD	EXPOSED AT - 55 °C , 96 h.		NO DAMAGE, CRACK AND LOOSENESS OF PARTS.		X	—
SEALING	EXPOSED AT A DEPTH OF 1 m FOR 0.5 h.		NO WATER PENETRATION INSIDE CONNECTOR.		X	—
AIRTIGHTNESS	APPLY AIR PRESSURE 17.6kPa FOR 0.5min TO INSIDE CONNECTOR.		NO AIR BUBBLES INSIDE CONNECTOR.		X	—
	COUNT	DESCRIPTION OF REVISIONS	DESIGNED	CHECKED	DATE	
①						
REMARK				APPROVED	SU. OBARA	09.12.09
NOTES(1)R/T : ROOM TEMPERATURE				CHECKED	HY. KISHI	09.12.09
(2)ABOVE SPECIFICATIONS SHOWS THE VELVE IN ASSEMBLED CONDITION WITH APPLICABLE CRIMP CONTACT.				DESIGNED	TY. SUZUKI	09.12.09
(3)SEALING AND AIRTIGHTNESS SHALL BE TESTED BY APPLICABLE CONNECTOR.						
(4)2 A RATE CURRENT IS THE MAXIMUM CURRENT FLOW PER CONTACT. THE CURRENT CAPACITY OF WHOLE CONNECTOR IS 20.4 A MAX. Unless otherwise specified, refer to JIS C 5402.				DRAWN	TY. SUZUKI	09.12.09
Note QT:Qualification Test AT:Assurance Test X:Applicable Test			DRAWING NO.		ELC4-116605-00	
HRS	SPECIFICATION SHEET		PART NO.	HR30-8JB-12SC		
	HIROSE ELECTRIC CO., LTD.		CODE NO.	CL130-2026-5-00		1/1



3	POLYBUTYLE TEREPHTHALATE (BLACK) UL94V-0	5	SILICONE RUBBER (RED)
2	POLYPHENYLENE SULFIDE (BLACK) UL94V-0	4	POLYBUTYLE TEREPHTHALATE (BLACK) UL94V-0
1	POLYPHENYLENE SULFIDE (BLACK) UL94V-0		
NO.	MATERIAL	FINISH	REMARKS
UNITS	mm	SCALE	5:1
COUNT	DESCRIPTION OF REVISIONS	DESIGNED	CHECKED
	APPROVED + SU, OBARA	09.12.09	DRAWING NO. EDC3-116605-00
	CHECKED +HY, KISHI	09.12.09	PART NO. HR30-8JB-12SC
	DESIGNED +TY, SUZUKI	09.12.09	CODE NO. CL130-2026-5-00
	DRAWN +TY, SUZUKI	09.12.09	