

Excellent Integrated System Limited

Stocking Distributor

Click to view price, real time Inventory, Delivery & Lifecycle Information:

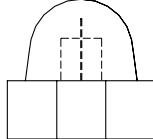
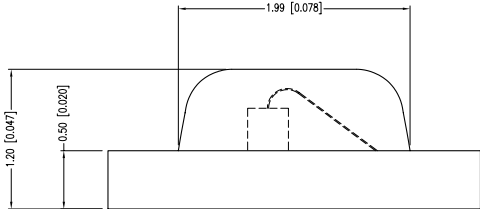
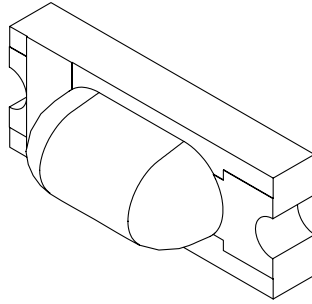
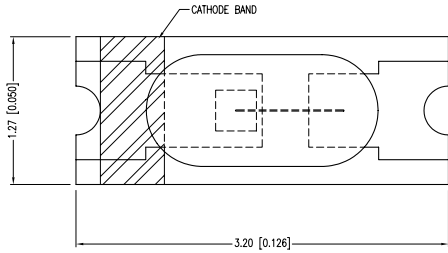
[Lumex, Inc.](#)

[CCL-LX45YT](#)

For any questions, you can email us directly:

sales@integrated-circuit.com

| PART NUMBER | CCL-LX45YT | REV. | I |
|-------------|-------------------------------------|------|------|
| DATE | E.C.N. NUMBER AND REVISION COMMENTS | | REV. |
| 11.20.95 | ADDED TAPE AND REEL SPEC. | | A |
| 12.18.95 | E.C.N. #10105. | | B |
| 04.08.96 | E.C.N. #10143. | | C |
| 05.30.96 | E.C.N. #10176. | | D |
| 11.09.98 | E.C.N. #10BRDR. & REDRAWN. | | E |
| 04.28.99 | E.C.N. #10511./ADDED SOLDER CHART. | | F |
| 06.17.99 | E.C.N. #10524./CHANGED HEIGHT. | | G |
| 12.04.06 | E.C.N. #11148. | | H |
| 04.12.11 | E.C.N. #10BRDR. & REDRAWN. | | I |

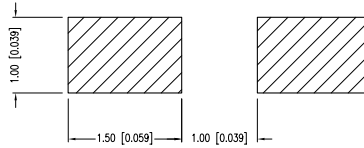
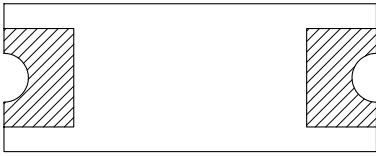


| ELECTRO-OPTICAL CHARACTERISTICS TA = 25°C If = 20mA | | | | | |
|---|--------------------|------|-----|----------|-----------|
| PARAMETER | MIN | TYP. | MAX | UNITS | TEST COND |
| PEAK WAVELENGTH | | 585 | | nm | |
| FORWARD VOLTAGE | | 2.3 | 2.5 | Vf | If=100uA |
| REVERSE VOLTAGE | 5.0 | | | Vr | If=20mA |
| AXIAL INTENSITY | | 7.0 | | md | If=20mA |
| VIEWING ANGLE | | 180 | | 2x theta | |
| EMITTED COLOR: | YELLOW | | | | |
| EPOXY LENS FINISH: | YELLOW TRANSPARENT | | | | |

| LIMITS OF SAFE OPERATION AT 25°C | | |
|----------------------------------|-------------|-------|
| PARAMETER | MAX | UNITS |
| PEAK FORWARD CURRENT* | 800 | mA |
| STEADY CURRENT | 30 | mA |
| POWER DISSIPATION | 130 | mW |
| DERATE FROM 25°C | -2.4 | mW/°C |
| OPERATING TEMP. | -30 TO +80 | °C |
| STORAGE TEMP. | -40 TO +120 | °C |

* t<10µs

RECOMMENDED SOLDER PAD LAYOUT



LUMEX
Creating LED and LCD Solutions Together™
290 E. HELEN ROAD
PALATINE, IL 60067-6976
PHONE: +1.847.359.2790
FAX: +1.847.359.6538
WEB: WWW.LUMEX.COM

CERAMIC CHIP, SURFACE, MOUNT LED, YELLOW TRANSPARENT, TAPE AND REEL.

THE SPECIFICATIONS MAY CHANGE AT ANY TIME WITHOUT NOTICE DUE TO NEW MATERIALS OR PRODUCT IMPROVEMENT.

CONFIDENTIAL INFORMATION

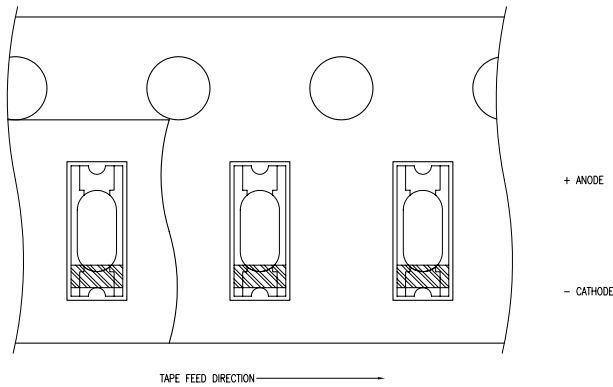
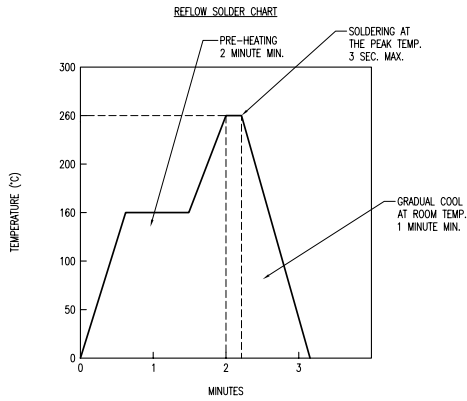
THE INFORMATION CONTAINED IN THIS DOCUMENT IS THE PROPERTY OF LUMEX INC. EXCEPT AS SPECIFICALLY AUTHORIZED IN WRITING BY LUMEX INC., THE HOLDER OF THIS DOCUMENT SHALL KEEP ALL INFORMATION CONTAINED HEREIN CONFIDENTIAL AND SHALL PROTECT SAME IN WHOLE OR IN PART FROM DISCLOSURE AND DISSEMINATION TO ALL THIRD PARTIES.

UNCONTROLLED DOCUMENT

| | | | |
|--------|-----------|-----------|----|
| DATE: | 04.12.11 | DRAWN BY: | AB |
| PAGE: | 1 OF 2 | CHKD BY: | SS |
| SCALE: | NTS | APRVD BY: | JD |
| UNIT: | mm [INCH] | | |

UNCONTROLLED DOCUMENT

| PART NUMBER | CCL-LX45YT | REV. | I |
|-------------|-------------------------------------|------|------|
| DATE | E.C.N. NUMBER AND REVISION COMMENTS | | REV. |
| 11.20.95 | ADDED TAPE AND REEL SPEC. | | A |
| 12.18.95 | E.C.N. #10105. | | B |
| 04.08.96 | E.C.N. #10143. | | C |
| 05.30.96 | E.C.N. #10176. | | D |
| 11.09.98 | E.C.N. #10BRDR. & REDRAWN. | | E |
| 04.28.99 | E.C.N. #10511./ADDED SOLDER CHART. | | F |
| 06.17.99 | E.C.N. #10524./CHANGED HEIGHT. | | G |
| 12.04.06 | E.C.N. #11148. | | H |
| 04.12.11 | E.C.N. #10BRDR. & REDRAWN. | | I |



*UNLESS OTHERWISE SPECIFIED TOLERANCES PER DECIMAL PRECISION ARE: X=±1 (±0.039), XX=±0.5 (±0.020), XXX=±0.25 (±0.010), XXXX=±0.127 (±0.005). LEAD SIZE=±0.05 (±0.002), LEAD LENGTH=±0.75 (±0.030). MIN= ^{+0.00}/_{-0.00} DECIMAL PRECISION MAX= ^{+0.00}/_{-0.00} DECIMAL PRECISION UNCONTROLLED DOCUMENT

LUMEX
Creating LED and LCD Solutions Together™
290 E. HELEN ROAD
PALATINE, IL 60067-6976
PHONE: +1.847.359.2790
FAX: +1.847.359.6538
WEB: WWW.LUMEX.COM

CERAMIC CHIP, SURFACE, MOUNT LED, YELLOW TRANSPARENT, TAPE AND REEL.
THE SPECIFICATIONS MAY CHANGE AT ANY TIME WITHOUT NOTICE DUE TO NEW MATERIALS OR PRODUCT IMPROVEMENT.
CONFIDENTIAL INFORMATION
THE INFORMATION CONTAINED IN THIS DOCUMENT IS THE PROPERTY OF LUMEX INC. EXCEPT AS SPECIFICALLY AUTHORIZED IN WRITING BY LUMEX INC., THE HOLDER OF THIS DOCUMENT SHALL KEEP ALL INFORMATION CONTAINED HEREIN CONFIDENTIAL AND SHALL PROTECT SAME IN WHOLE OR IN PART FROM DISCLOSURE AND DISSEMINATION TO ALL THIRD PARTIES.

| | | | |
|--------|-----------|-----------|----|
| DATE: | 04.12.11 | DRAWN BY: | AB |
| PAGE: | 2 OF 2 | CHKD BY: | SS |
| SCALE: | NTS | APRVD BY: | JD |
| UNIT: | mm [INCH] | | |