

Excellent Integrated System Limited

Stocking Distributor

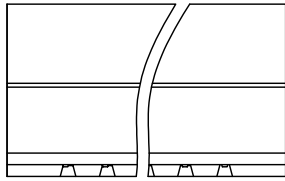
Click to view price, real time Inventory, Delivery & Lifecycle Information:

[On-Shore Technology, Inc.](#)
[OSTVL225251](#)

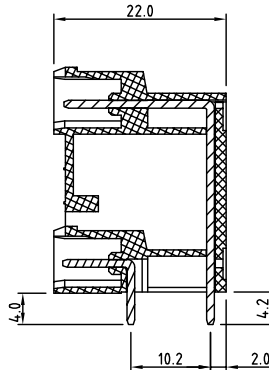
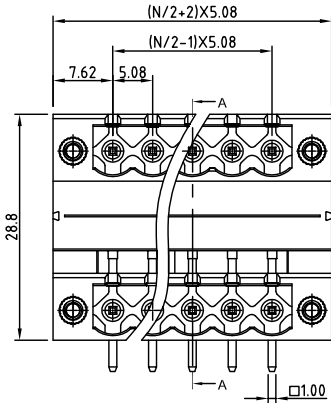
For any questions, you can email us directly:

sales@integrated-circuit.com

SIGN	DATE	DESCRIPTION	APPROVER
THIS IS CAD DRAWING, DO NOT REVISE MANUALLY!!!			

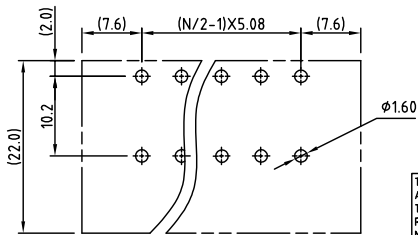


N=NUMBER OF POLES



SEC A-A

P.C.B LAYOUT



THESE DRAWINGS AND SPECIFICATIONS ARE THE PROPERTY OF ON-SHORE TECHNOLOGY, INC. AND SHALL NOT BE REPRODUCED, COPIED OR USED IN ANY MANNER WITHOUT THE PRIOR WRITTEN CONSENT OF ON-SHORE TECHNOLOGY, INC.

Material

- Terminal body (Contact pin): Brass Whit Tin plated
- Flange screw nut: Brass M2.5
- Insulator (housing): Thermoplastic (UL94V-0)

Electrical cULus

- Voltage rating: 300VAC
- Current rating: 20A
- Withstanding Voltage: 1.6KV
- Operating temperature: -30°C to +105°C
- Soldering temperature: 250°C±10°C/5 Sec
- Safety Approval:

RoHS Compliant

PART NUMBER:

OSTVLXX5251

- No. of Poles
- 04: 2x02 Poles
 - 06: 2x03 Poles
 - : :
 - 48 2x24 Poles
- COLOR
- 0: Black
 - 5: Green (Standard)
 - 6: Blue
 - 8: Grey



TITLE		OSTVL-5.08mm Series With Flange right-angle 2x2p-2x24p			
PART NO.	OSTVLXX5251	DWG NO.	OSTVLXX5251DWG		
APPROVED	CHECKED	DESIGNED	DRAWN	CUST NO.	Tolerance
Shi Jun 2006.10.23	Marvin 2006.10.23	Marvin 2006.10.23	Marvin 2006.10.23		X: ±0.50 X.X: ±0.30 X.XX: ±0.10 X*: ±1°
				SHEET: 01/01	REV.: D