

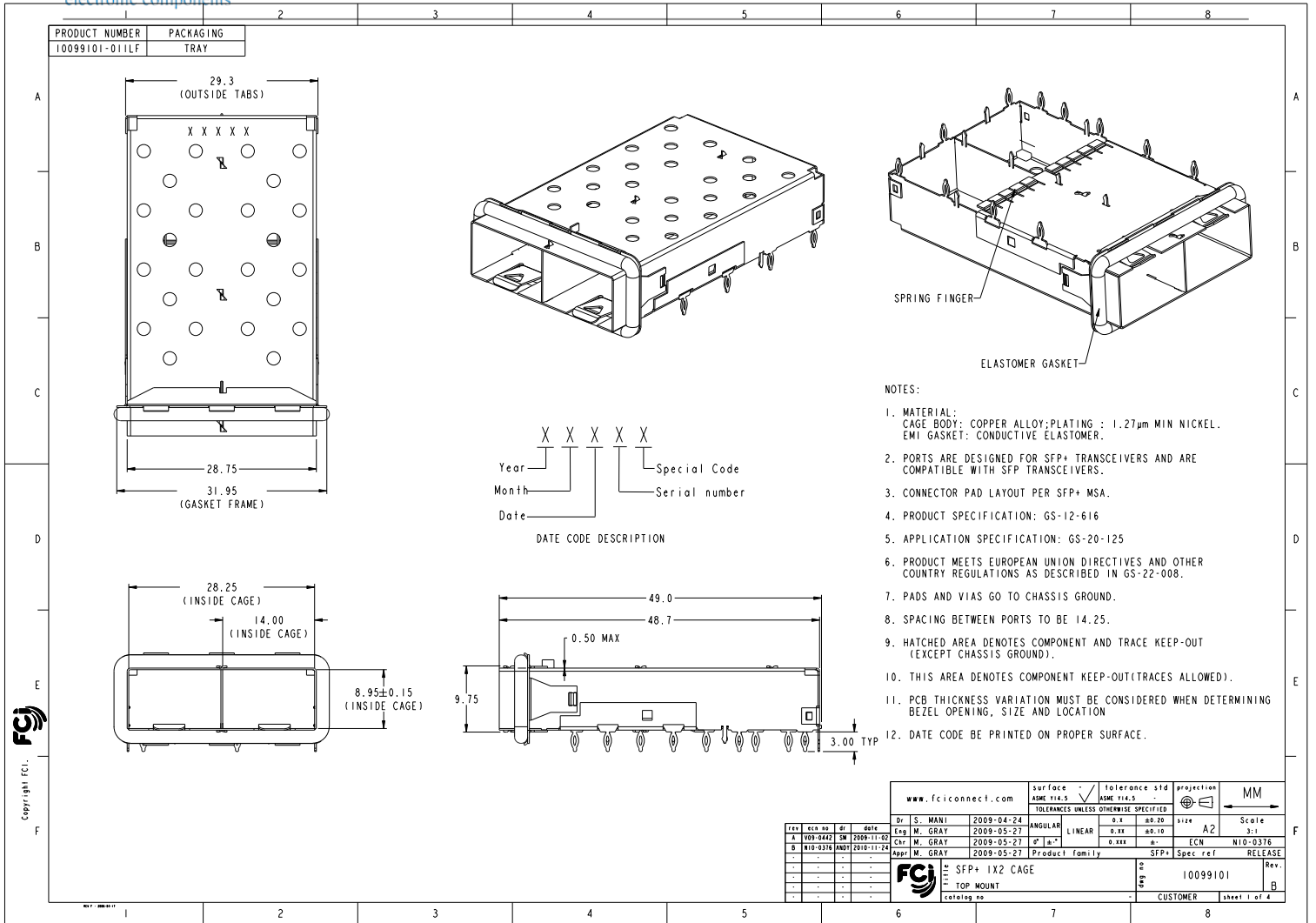
Excellent Integrated System Limited

Stocking Distributor

Click to view price, real time Inventory, Delivery & Lifecycle Information:

[FCI](#)
[10099101-011LF](#)

For any questions, you can email us directly:
sales@integrated-circuit.com



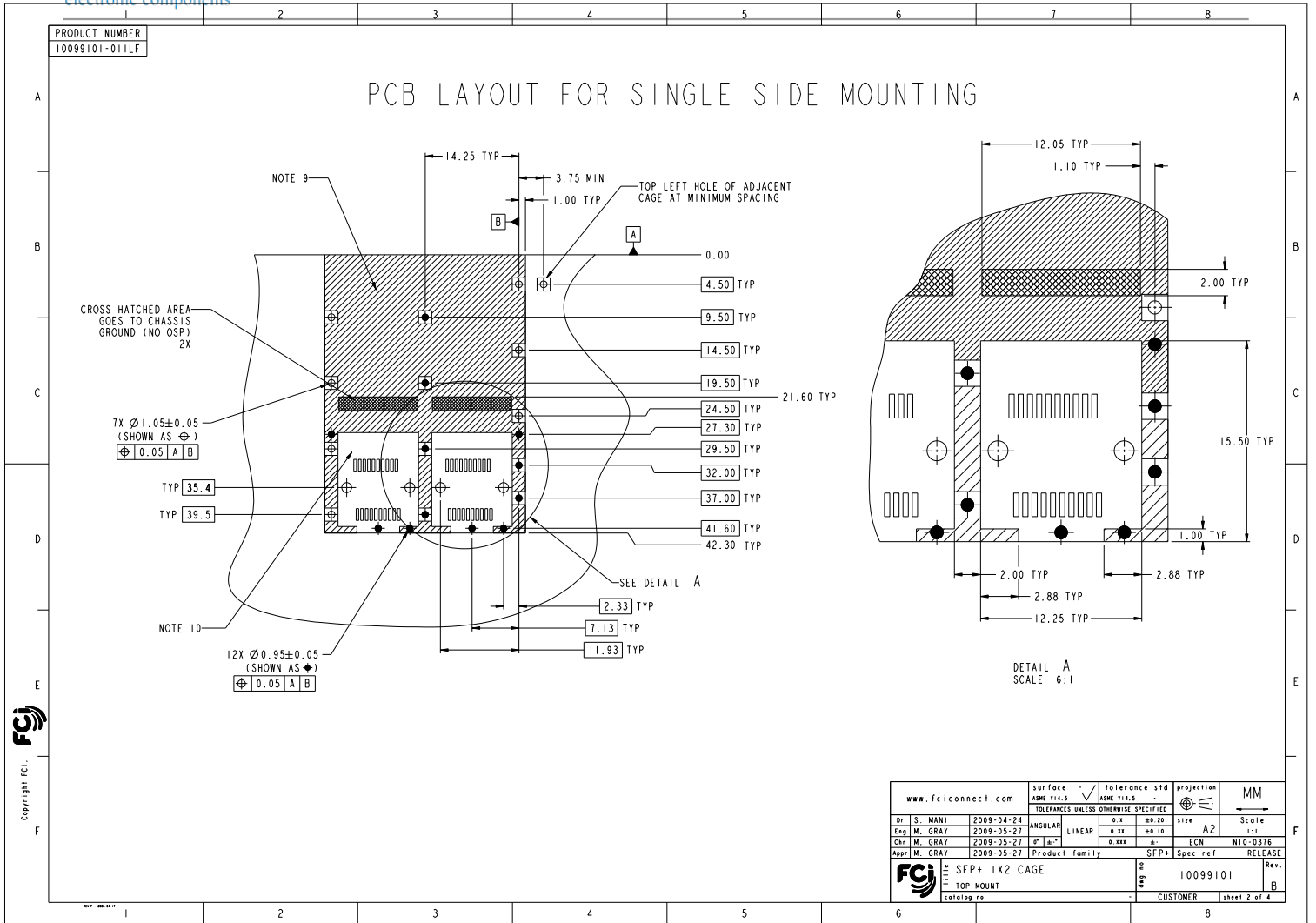
Year X X X X X
 Month | | | | | |
 Date | | | | | | | |
 Special Code
 Serial number

DATE CODE DESCRIPTION

- NOTES:
1. MATERIAL: CAGE BODY: COPPER ALLOY; PLATING : 1.27µm MIN NICKEL. EMI GASKET: CONDUCTIVE ELASTOMER.
 2. PORTS ARE DESIGNED FOR SFP+ TRANSCEIVERS AND ARE COMPATIBLE WITH SFP TRANSCEIVERS.
 3. CONNECTOR PAD LAYOUT PER SFP+ MSA.
 4. PRODUCT SPECIFICATION: GS-12-616
 5. APPLICATION SPECIFICATION: GS-20-125
 6. PRODUCT MEETS EUROPEAN UNION DIRECTIVES AND OTHER COUNTRY REGULATIONS AS DESCRIBED IN GS-22-008.
 7. PADS AND VIAS GO TO CHASSIS GROUND.
 8. SPACING BETWEEN PORTS TO BE 14.25.
 9. HATCHED AREA DENOTES COMPONENT AND TRACE KEEP-OUT (EXCEPT CHASSIS GROUND).
 10. THIS AREA DENOTES COMPONENT KEEP-OUT (TRACES ALLOWED).
 11. PCB THICKNESS VARIATION MUST BE CONSIDERED WHEN DETERMINING BEZEL OPENING, SIZE AND LOCATION.
 12. DATE CODE BE PRINTED ON PROPER SURFACE.

Copyright FCI

www.fciconnect.com				surface	tolerance std	projection	MM
				SOME TYP.S	SOME TYP.S		
				TOLERANCES UNLESS OTHERWISE SPECIFIED			
REV	DATE	BY	DATE	ANGULAR	0.1	±0.20	size
A	1009-04-24	SM	2009-11-02	LINEAR	0.1x	±0.10	A2
B	1010-03-16	ANDY	2010-11-24		0.1x	±	ECN
							N10-0318
							RELEASE
							SFP+ Spec ref
							Rev.
							10099101
							CUSTOMER
							sheet 1 of 4



PDM: Rev:B

STATUS:Released

Printed: Mar 22, 2011

