



Excellent Integrated System Limited

Stocking Distributor

Click to view price, real time Inventory, Delivery & Lifecycle Information:

[Samtec, Inc.](#)
[BTE-040-01-L-D-A](#)

For any questions, you can email us directly:
sales@integrated-circuit.com

REVISION AX

DO NOT SCALE FROM THIS PRINT

TABLE 1					
STYLE	"A"	"B"	BODY	TERMINAL	MATED HEIGHT WITH BSE
-01	.1600[4.064] REF	.1680[4.267]	BTE-XXX-01-D	T-1S39-01-X	.1980[5.029] REF
-02	.2781[7.064] REF	.2861[7.267]	BTE-XXX-02-D	T-1S59-02-X	.3161[8.029] REF
-03	.3962[10.063] REF	.4042[10.267]	BTE-XXX-03-D	T-1S39-03-X	.4342[11.029] REF

BTE-XXX-XX-X-D-XX

No OF POSITIONS
-020, -040, -060,
[-080, *-090, -100, -120]
(PER ROW)
*-03, -04 & -08 BODY STYLE ONLY

OPTION

- A: ALIGNMENT PINS (USE BTE-XXX-XX-D-A)
- LC: LOCKING CLIPS (SEE NOTE 13) (USE LC-08-TM-01)
- K: POLYIMIDE FILM (N/A ON STYLES -07 & -08) (USE K-DOT-276-.375-.005, SEE FIG 2)
- TR: TAPE & REEL (80 POS MAX) (N/A ON STYLE -05, -06, -07 & -08)
- FL: FRICTION LOCK (SEE FIG 4, SHEET 3) (USE BTE-XXX-01-D-X-FL) (AVAIL ON LEAD STYLE -01 ONLY, -020 THRU -100 POSITIONS ONLY)

BODY STYLE

- 01: .1680[4.267]
- 02: .2861[7.264]
- 03: .4042[10.266]
- 04: .6010[15.265]
- 05: .7190[18.263]
- 06: .8370[21.260]
- 07: .9542[24.237]
- 08: 1.1511[29.238]
- 09: .5224[13.269]

ROW SPECIFICATION

- D: DOUBLE (USE BTE-XXX-XX-D-X & BTEH-XXX-XX-D-X)

PLATING SPECIFICATION

- F: 3µ" SELECTIVE GOLD IN CONTACT AREA, WITH MATTE TIN TAILS (USE T-1SXX-XX-F) (SEE NOTE 10)
- L: 10µ" SELECTIVE GOLD IN CONTACT AREA, MATTE TIN TAILS (USE T-1SXX-XX-L) (SEE NOTE 10)
- H: 30µ" GOLD IN CONTACT AREA, 3µ" GOLD ON TAIL (USE T-1SXX-XX-H)
- C: 50µ" GOLD IN CONTACT AREA, 3µ" GOLD ON TAIL (USE T-1SXX-XX-C)

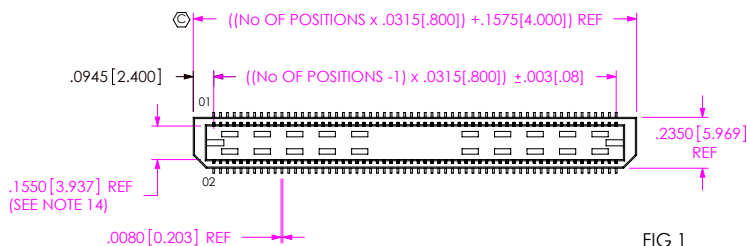
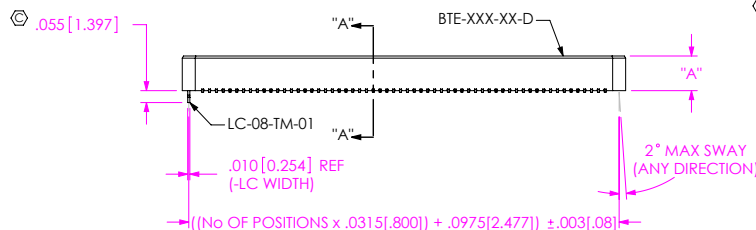
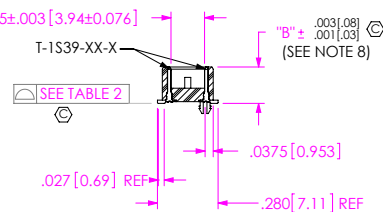


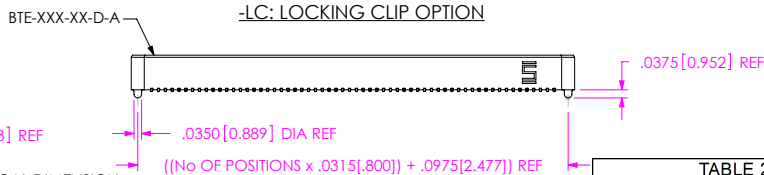
FIG 1
BTE-060-01-X-D-LC SHOWN



-LC: LOCKING CLIP OPTION



SECTION "A"-"A"



-A: ALIGNMENT PIN OPTION

NOTES:

- ⊙ REPRESENTS A CRITICAL DIMENSION.
- NOTE DELETED.
- BURR ALLOWANCE: .0015[.038] MAX.
- NOTE DELETED.
- MINIMUM PUSHOUT FORCE: 6 OZ.
- NOTE DELETED.
- PARTS TO BE MOLD TO POSITION.
- MAX VARIANCE OF .002[.05].
- BTE-XXX-03-D BODY CAN BE SUBSTITUTED FOR BTE-XXX-03-D-A.
- L PLATING CAN BE SUBSTITUTED FOR -F PLATING.
- NOTE DELETED.
- NOTE DELETED.
- DUE TO THE HIGH AMOUNT OF INSERTION FORCE NEEDED, THE -LC OPTION IS NOT COMPATIBLE WITH AUTO PLACEMENT. SAMTEC RECOMMENDS MANUAL PLACEMENT FOR ALL ASSEMBLIES WITH THE -LC OPTION."
- PIN CAN EXTEND PAST WALL .003 [.08] MAX.

TABLE 2	
POSITIONS	COPLANARITY
-20 THRU -60	.004[.10]
-80 THRU -120	.006[.15]

UNLESS OTHERWISE SPECIFIED, DIMENSIONS ARE IN INCHES. TOLERANCES ARE:
DECIMALS ANGLES
.XX: ±.01 [.3] 2°
.XXX: ±.005 [.13]
.XXXX: ±.0020 [.051]

PROPRIETARY NOTE

THIS DOCUMENT CONTAINS CONFIDENTIAL AND PROPRIETARY INFORMATION AND ALL RIGHTS, MANUFACTURING, REPRODUCTION, USE, PATENT RIGHTS AND SALES RIGHTS ARE EXPRESSLY RESERVED BY SAMTEC, INC. THIS DOCUMENT SHALL NOT BE DISCLOSED, IN WHOLE OR PART, TO ANY UNAUTHORIZED PERSON OR ENTITY NOR REPRODUCED, TRANSMITTED OR INCORPORATED IN ANY OTHER PROJECT IN ANY MANNER WITHOUT THE EXPRESS WRITTEN CONSENT OF SAMTEC, INC.

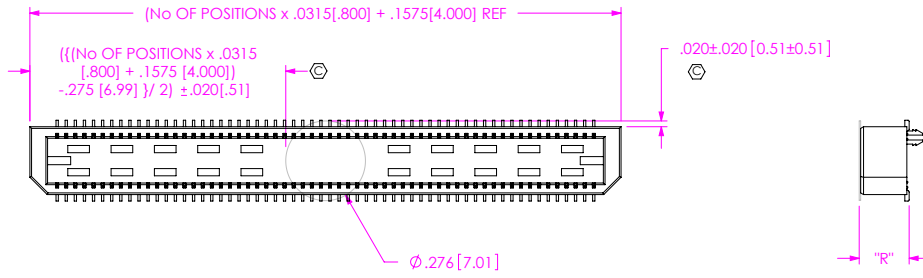
MATERIAL: DO NOT SCALE DRAWING SHEET SCALE: 1:1.5
INSULATOR: LCP, COLOR: BLACK, FLAMMABILITY RATING: UL94V0
TERMINAL: PHOS BRONZE

Samtec
520 PARK EAST BLVD, NEW ALBANY, IN 47150
PHONE: 812-944-6733 FAX: 812-948-5047
e-Mail info@SAMTEC.com code 55322

DESCRIPTION: .8mm DOUBLE ROW TERMINAL ASSEMBLY
DWG. NO. BTE-XXX-XX-X-D-XX
BY: DEAN P 03/22/1999 SHEET 1 OF 3

REVISION AX

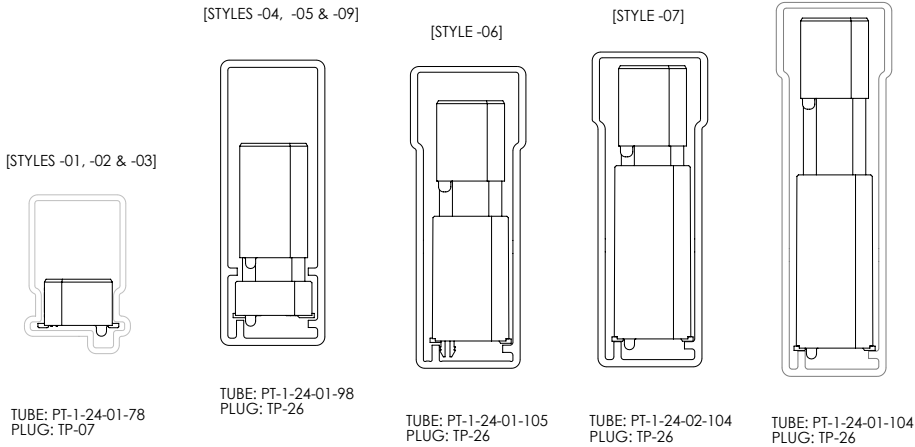
FIG 2
-K: POLYIMIDE FILM PAD



STYLE	"R"
-01	.173 4.39
-02	.291 7.39
-03	.409 10.39
-04	.606 15.39
-05	.724 18.39
-06	.842 21.39
-09	.527 13.40

PACKAGING VIEW

[PARTS NEED TO BE LOADED PER PACKAGING VIEWS]
 [-05 LEADSTYLE PARTS WITH KAPTON TO BE LOADED WITH KAPTON RESTING ON THE TUBE RIBS].



STYLE	PACKAGING TUBE	PLUG
-01	PT-1-24-01-78	TP-07
-02		
-03		
-04	PT-1-24-01-98	TP-26
-05		
-06	PT-1-24-01-105	
-07	PT-1-24-02-104	
-08	PT-1-24-01-104	TP-26
-09	PT-1-24-01-98	

PROPRIETARY NOTICE
 THIS DOCUMENT CONTAINS CONFIDENTIAL AND PROPRIETARY INFORMATION AND ALL DESIGN, MANUFACTURING, REPRODUCTION, USE, PATENT RIGHTS AND SALES RIGHTS ARE EXPRESSLY RESERVED BY SAMTEC, INC. THIS DOCUMENT SHALL NOT BE DISCLOSED, IN WHOLE OR PART, TO ANY UNAUTHORIZED PERSON OR ENTITY NOR REPRODUCED, TRANSFERRED OR INCORPORATED IN ANY OTHER PRODUCT IN ANY MANNER WITHOUT THE EXPRESS WRITTEN CONSENT OF SAMTEC, INC.

F:\DWG\MISC\MKTG\BTE-XXX-XX-X-D-XX-MKT.SLDDRW
Samtec
 520 PARK EAST BLVD, NEW ALBANY, IN 47150
 PHONE: 812-944-6733 FAX: 812-948-5047
 e-Mail info@SAMTEC.com code 55322

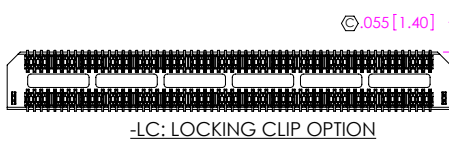
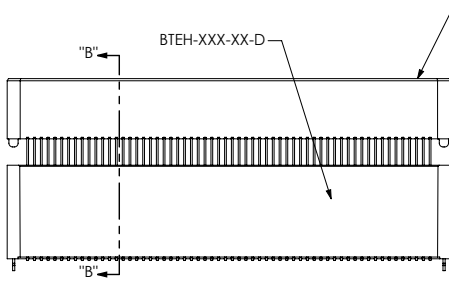
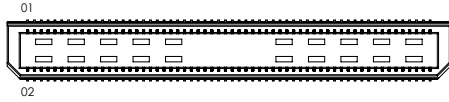
DO NOT SCALE DRAWING
 SHEET SCALE: 2:1

DESCRIPTION: .8mm DOUBLE ROW TERMINAL ASSEMBLY
 DWG. NO. **BTE-XXX-XX-X-D-XX**
 BY: DEAN P 03/22/1999 SHEET 2 OF 3

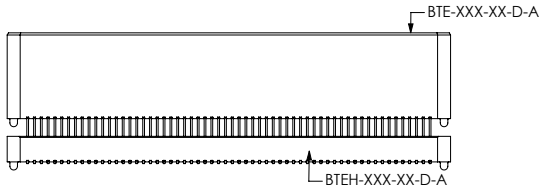
REVISION AX

FIG 3

BTE-060-06-X-D-LC SHOWN
[DIFFERENT AS SHOWN, OTHERWISE SAME AS FIG 1]

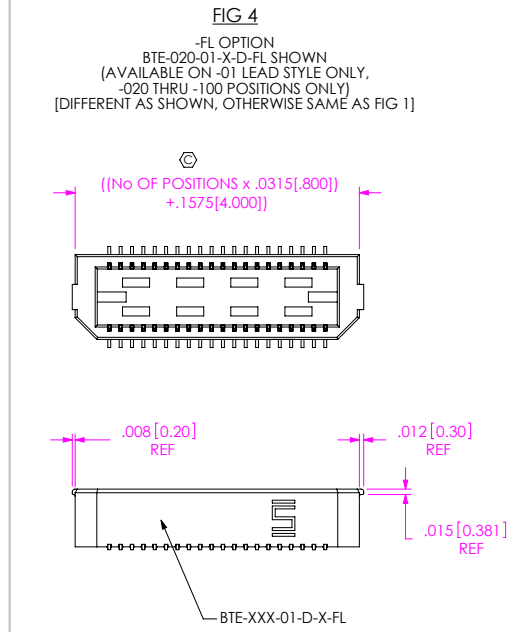
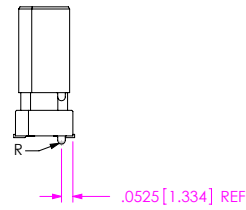
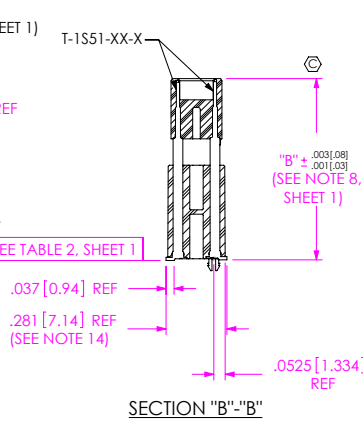


-LC: LOCKING CLIP OPTION



-A: ALIGNMENT PIN OPTION
[STYLE -04, -05, -06, -07, -08 & -09]

STYLE		"B"	TERMINAL	BOTTOM BODY	TOP BODY	MATED HEIGHT WITH BSE
-04	.6010 [15.265]		T-1S41-04-X	BTEH-XXX-01-D-X	BTE-XXX-03-D-A	.634 [16.10] REF
-05	.7190 [18.263]		T-1S41-05-X	BTEH-XXX-01-D-X	BTE-XXX-03-D-A	.752 [19.10] REF
-06	.8370 [21.260]		T-1S51-06-X	BTEH-XXX-03-D-X	BTE-XXX-02-D-A	.867 [22.02] REF
-07	.9542 [24.237]		T-1S61-21-F, T-1S61-21-L, T-1S61-21-H	BTEH-XXX-04-D-X	BTE-XXX-02-D-A	.9842 [25.00] REF
-08	1.1511 [29.238]		T-1S61-22-X	BTEH-XXX-04-D-X	BTE-XXX-02-D-A	1.1811 [30.00] REF
-09	.5224 [13.269]		T-1S60-09-X	BTEH-XXX-01-D-X	BTE-XXX-02-D-A	.551 [14.00] REF



PROPRIETARY NOTE
THIS DOCUMENT CONTAINS CONFIDENTIAL AND PROPRIETARY INFORMATION AND ALL DESIGN, MANUFACTURING, REPRODUCTION, USE, PATENT RIGHTS AND SALES RIGHTS ARE EXPRESSLY RESERVED BY SAMTEC, INC. THIS DOCUMENT SHALL NOT BE DISCLOSED, IN WHOLE OR PART, TO ANY UNAUTHORIZED PERSON OR ENTITY NOR REPRODUCED, TRANSMITTED OR INCORPORATED IN ANY OTHER PROJECT IN ANY MANNER WITHOUT THE EXPRESS WRITTEN CONSENT OF SAMTEC, INC.

samtec
520 PARK EAST BLVD, NEW ALBANY, IN 47150
PHONE: 812-944-6733 FAX: 812-948-5047
e-Mail info@SAMTEC.com code 55322

DO NOT SCALE DRAWING

SHEET SCALE: 1.5:1

DESCRIPTION: .8mm DOUBLE ROW TERMINAL ASSEMBLY

DWG. NO. BTE-XXX-XX-X-D-XX

BY: DEAN P 03/22/1999 SHEET 3 OF 3