

Excellent Integrated System Limited

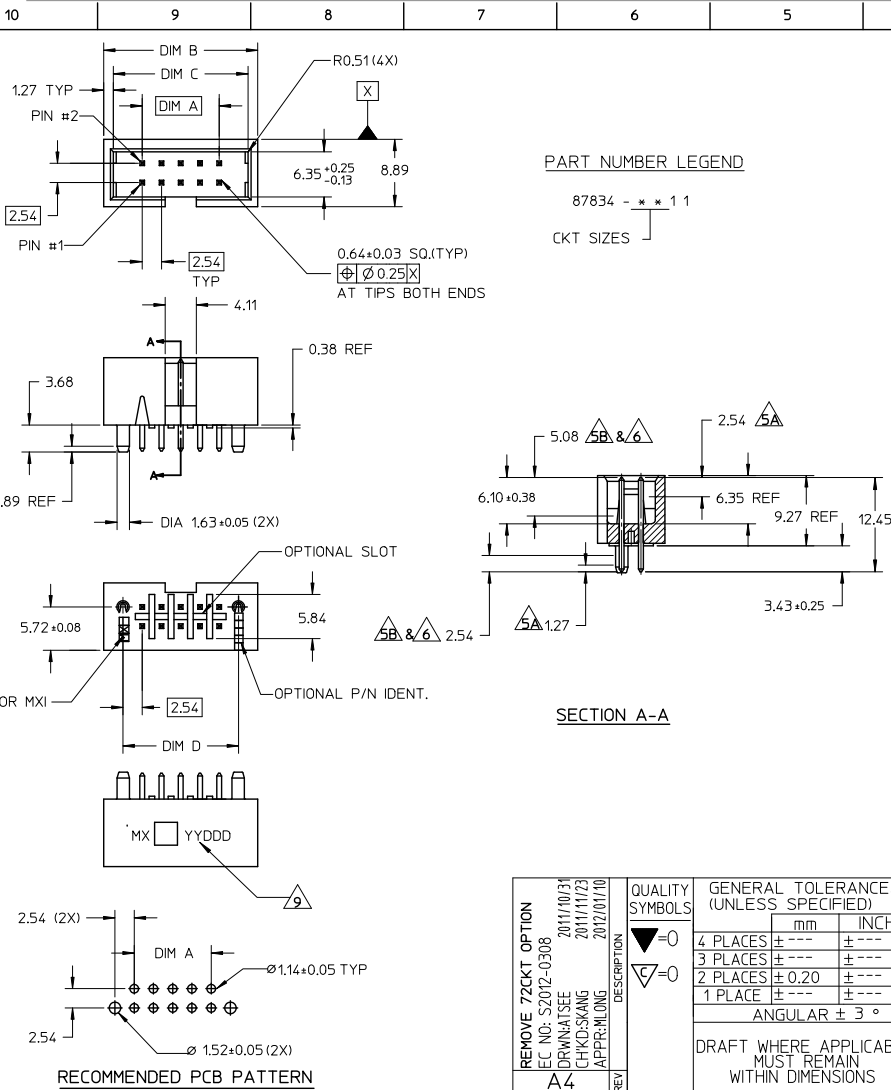
Stocking Distributor

Click to view price, real time Inventory, Delivery & Lifecycle Information:

[Molex Connector Corporation](#)
[0878341611](#)

For any questions, you can email us directly:

sales@integrated-circuit.com



ASSEMBLY P/N	CKT SIZE	DIM A	DIM B	DIM C	DIM D
87834-0411	04	2.54	12.70	10.16	7.62
87834-0611	06	5.08	15.24	12.70	10.16
87834-0811	08	7.62	17.78	15.24	12.70
87834-1011	10	10.16	20.32	17.78	15.24
87834-1211	12	12.70	22.86	20.32	17.78
87834-1411	14	15.24	25.40	22.86	20.32
87834-1611	16	17.78	27.94	25.40	22.86
87834-1811	18	20.32	30.48	27.94	25.40
87834-2011	20	22.86	33.02	30.48	27.94
87834-2411	24	27.94	38.10	35.56	33.02
87834-2611	26	30.48	40.64	38.10	35.56
87834-3011	30	35.56	45.72	43.18	40.64
87834-3411	34	40.64	50.80	48.26	45.72
87834-4011	40	48.26	58.42	55.88	53.34
87834-4411	44	53.34	63.50	60.96	58.42
87834-5011	50	60.96	71.12	68.58	66.04
87834-5611	56	68.58	78.74	76.20	73.66
87834-6011	60	73.66	83.82	81.28	78.74
87834-6411	64	78.74	88.90	86.36	83.82

NOTES :

- MATERIAL :
HOUSING : NYLON 46 GLASS FILLED, UL94V-0, COLOR: BIEGE.
PIN : COPPER ALLOY.
 - PIN PUSHOUT FORCE 0.91 KG MIN.
 - PRODUCT SPECIFICATION PS-70246-100 APPLIES.
 - WAFER TO BE FLAT WITHIN 0.03MM/CM
- △5 DIMENSIONS FOR PLATING LOCATIONS : A - MEASURE POINT FOR THICKNESS.
B - MINIMUM COVERAGE.
- △6 GOLD END OF PIN UNLESS OVERALL PLATED.
7. FINISH :
0.13um MIN GOLD FLASH OVER 1.02um MIN.PD/Ni
IN SELECTED AREA AND 2.5um MIN.TIN IN SELECTED AREA OVER 1.27um MIN NICKEL OVERALL
8. FOR ILLUSTRATION PURPOSE A 10 CKT IS SHOWN.
- △9 OPTIONAL LOCATION FOR MANUFACTURER/YEAR/DAY MARKING IF REQUIRED BY CUSTOMER

REMOVE 72CKT OPTION EC NO. S2012-0308 DRAWN BY: DRW:WATSE 2011/10/31 CHKD:SKANG 2011/11/23 APPR:HLONG 2012/07/10	QUALITY SYMBOLS ▽=0 ▽=0	GENERAL TOLERANCES (UNLESS SPECIFIED)		DIMENSION STYLE MM ONLY		SCALE	DESIGN UNITS	THIRD ANGLE PROJECTION
			mm	INCH	DRAWN BY	DATE	TITLE	
		4 PLACES	± ---	± ---	RSHAN	2003/11/21	SALES DRAWING, C-GRID SHROUDED W/SLOTTED & IN-LINE POLARIZATION PEG	
		3 PLACES	± ---	± ---	CHECKED BY	DATE		
	2 PLACES	± 0.20	± ---	KCLING	2003/12/05	MOLEX INCORPORATED		
	1 PLACE	± ---	± ---	APPROVED BY	DATE			
	ANGULAR ± 3°		DRAFT WHERE APPLICABLE MUST REMAIN WITHIN DIMENSIONS		MATERIAL NO. SKTOH 2003/12/06 SEE TABLE THIS DRAWING CONTAINS INFORMATION THAT IS PROPRIETARY TO MOLEX INCORPORATED AND SHOULD NOT BE USED WITHOUT WRITTEN PERMISSION		DOCUMENT NO. SD-87834-024 SHEET NO. 1 OF 1	