

## Excellent Integrated System Limited

Stocking Distributor

Click to view price, real time Inventory, Delivery & Lifecycle Information:

[Artesyn Embedded Technologies](#)  
[SIL30E-12W3V3-VJ](#)

For any questions, you can email us directly:

[sales@integrated-circuit.com](mailto:sales@integrated-circuit.com)



# SIL30E Series

## E-Class Non-Isolated

### Data Sheet

**Total Power:** 99 Watts  
**Input Voltage:** 8 - 14Vdc  
**# of Outputs:** Single

### SPECIAL FEATURES

- 30 A current rating
- Input voltage range: 8 - 14Vdc
- Output voltage range: 0.8 - 3.63 V
- Ultra high efficiency: 93% @ 12 Vin and 3.3 Vout
- Extremely low internal power dissipation
- Minimal thermal design concerns
- Designed in reliability: MTBF of >9.2 million hours per Telcordia SR-332
- Ideal solution where board space is at a premium or tighter card pitch is required
- RoHS compliant
- Two year warranty

### SAFETY

- UL, cUL 60950-1 File No. 186249-A16-UL-1
- TÜV Product Service (EN60950) Certificate No. B07 07 13890 259
- CB report and certificate to IEC60950



Electrical Specifications		
Input		
Input voltage range		8 - 14 Vdc
Input current	No load (max.)	250 mA
Input current (max.)		9.2 A max. @ Io max. and Vout = 3.3 V
Input reflexed ripple		220 mA rms
Remote ON/OFF		See Note 1
Start-up time		20 ms
Output		
Voltage adjustability		0.8 to 3.63 Vdc
Setpoint accuracy		±1.3% typical
Line regulation		±0.2% typical
Load regulation		±1.5% typical
Total error band		±3.0% typical
Minimum load		0 A
Overshoot/undershoot		None
Ripple and noise	5 Hz - 20 MHz	50 mV max.; 25 mV rms
Temperature coefficient		±0.01%/ °C
Transient response	Vout = 1.5 V	50 - 75% load step
Slew rate	= 0.5 A/μs	3% max. deviation; 10 μs recovery to within ±1%
Remote sense		10% Vo compensation

All specifications are typical at 12 Vin and 1.5 Vout, full load at 25 °C, unless otherwise stated.

## SIL30E Series Data Sheet

### General Specifications

Efficiency	@12 Vin, 3.3 Vout	93%
Insulation voltage		Non-isolated
Switching frequency	Fixed	1.3 MHz
Approvals and standards		EN60950, UL/cUL60950
Material flammability		UL94V-0
Dimensions	L x W x H	50.84 x 7.80 x 12.70 mm 2 x 0.307 x 0.5 inches
Pin length		0.140 in (3.56 mm)
Weight		7.0 g (0.25 oz)
MTBF (@40 °C; 50% stress; ground benign)	Telcordia SR-332	9,200,000 hours

### EMC Characteristics

Electrostatic discharge	EN61000-4-2, IEC801-2
Conducted immunity	EN61000-4-6
Radiated immunity	EN61000-4-3

### Environmental Specifications

Thermal performance	Operating ambient temperature	-40 °C to +85 °C
	Non-operating temperature	-40 °C to +125 °C
<b>Protection</b>		
Short-circuit	Continuous	
Thermal	Automatic recovery	

### Ordering Information

Model Number <sup>(2)</sup>	Output Power (Max.)	Input Voltage	Output Voltage	Output Current (Min.)	Output Current (Max.)	Efficiency (Typical)	Regulation	
							Line	Load
SIL30E-12W3V3-VJ	99W	8 - 14 Vdc	0.8 - 3.63 V	0 A	30 A	93%	±0.2%	±1.5%

### Part Number System with Options

Product Family	Rated Output Current	Performance	Input Voltage	Number of Outputs	Output Voltage	Mounting Option	Packaging Options
<b>SIL</b>	<b>30</b>	<b>E</b>	<b>12</b>	<b>W</b>	<b>3V3</b>	<b>V</b>	<b>J</b>
SIL = Single In Line	30 = 30 Amp	E = Enhanced performance	12 = 8 - 14 Vdc	W = Wide	ADJ = Adjustable Output	V = Vertical H = Horizontal	J = Pb free (RoHS 6/6 compliant)

### Output Voltage Adjustment

The ultra-wide output voltage trim range offers major advantages to users who select the SIL30E-12W3V3. It is no longer necessary to purchase a variety of modules in order to cover different output voltages. The output voltage can be trimmed in a range of 0.8 Vdc to 3.63 Vdc. When the SIL30E-12W3V3 converter leaves the factory the output has been adjusted to the default voltage of 0.8 V.

#### Notes:

- The SIL30E features a 'Positive Logic' Remote ON/OFF operation. If not using the Remote ON/OFF pin, leave the pin open (the converter will be on). The Remote ON/OFF pin is referenced to ground. The following conditions apply for the SIL30E:

#### Configuration

Remote pin open circuit  
 Remote pin pulled low [Von/off < 0.8 V]  
 Remote pin pulled high [Von/off > 2.8 V]

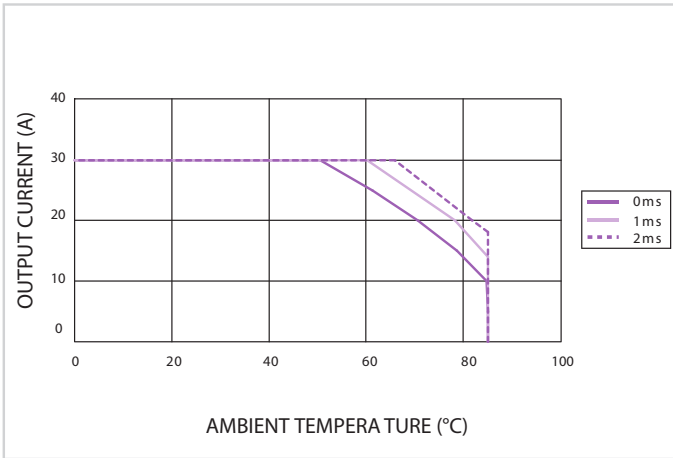
#### Converter Operation

Unit is ON  
 Unit is OFF  
 Unit is ON

- A 'Negative Logic' Remote ON/OFF version is also possible with this converter. Please consult the factory for details.
- NOTICE: Some models do not support all options. Please contact your local Artesyn representative or use the on-line model number search tool at <http://www.artesyn.com/power> to find a suitable alternative.

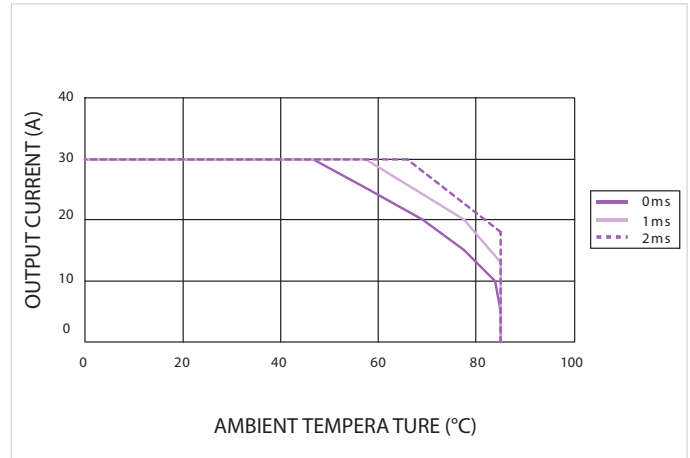
- The derating curve represents the condition at which internal components are within the Artesyn derating guidelines.
- Characteristic data has been developed from actual products tested at 25 °C. This data is considered typical data for the converter.

**SIL30E Series Data Sheet**



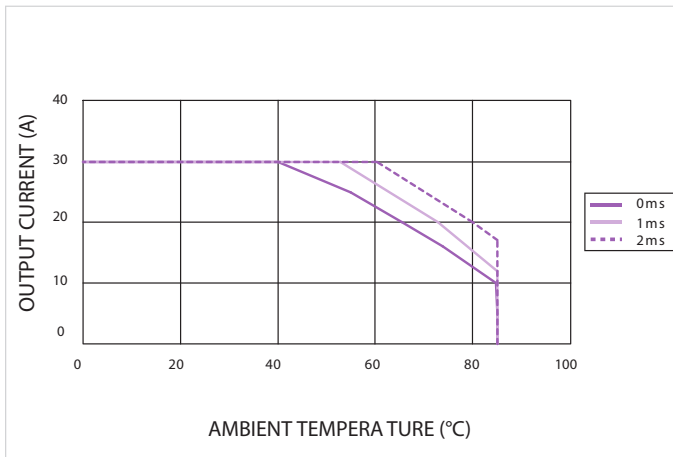
**Figure 1 - Derating Curve**

Vin = 12 V, Output Voltage = 1.5 V (See Note A)



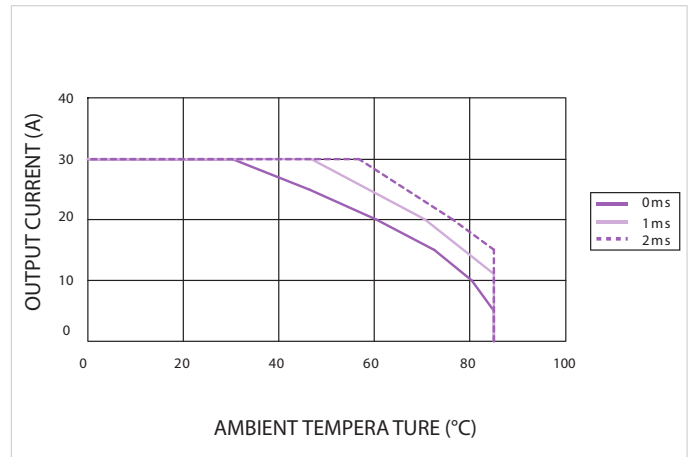
**Figure 2 - Derating Curve**

Vin = 12 V, Output Voltage = 1.8 V (See Note A)



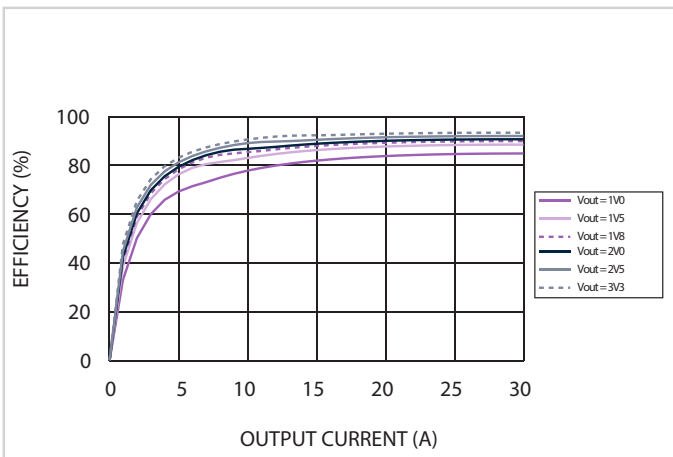
**Figure 3 - Derating Curve**

Vin = 12 V, Output Voltage = 2.5 V (See Note A)



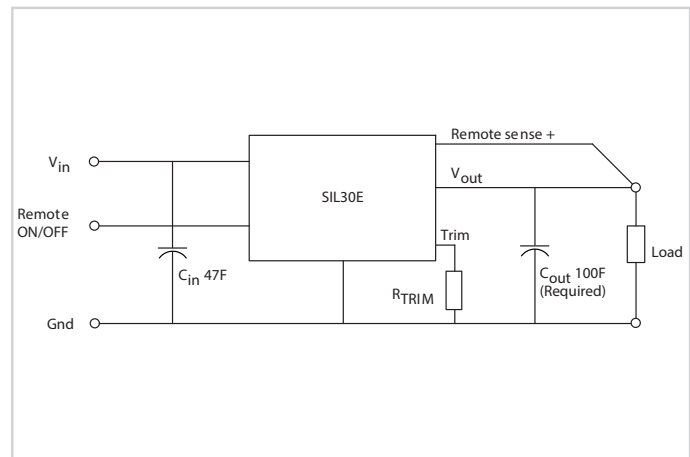
**Figure 4 - Derating Curve**

Vin = 12 V, Output Voltage = 3.3 V (See Note A)



**Figure 5 - Efficiency vs Load Current**

Vin = 12 V (See Note B)

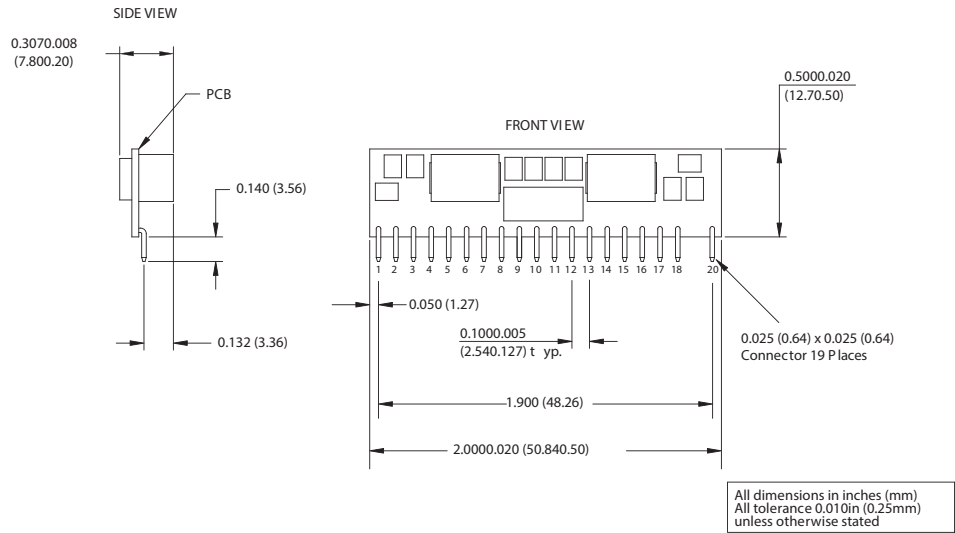


**Figure 6 - Standard Application**

SIL30E Series Data Sheet

Mechanical Drawings

Pin Assignments	
Pin	Function
1	Vin
2	Vin
3	Ground
4	Ground
5	Trim
6	Remote Sense +
7	Ground
8	Ground
9	Vout
10	Vout
11	Vout
12	Vout
13	Remote ON/OFF
14	Ground
15	Ground
16	Ground
17	Ground
18	Vin
19	N/C
20	Vin



WORLDWIDE OFFICES

Americas

2900 S.Diablo Way  
Tempe, AZ 85282  
USA  
+1 888 412 7832

Europe (UK)

Waterfront Business Park  
Merry Hill, Dudley  
West Midlands, DY5 1LX  
United Kingdom  
+44 (0) 1384 842 211

Asia (HK)

14/F, Lu Plaza  
2 Wing Yip Street  
Kwun Tong, Kowloon  
Hong Kong  
+852 2176 3333



www.artesyn.com

While every precaution has been taken to ensure accuracy and completeness in this literature, Artesyn Embedded Technologies assumes no responsibility, and disclaims all liability for damages resulting from use of this information or for any errors or omissions. Artesyn Embedded Technologies, Artesyn and the Artesyn Embedded Technologies logo are trademarks and service marks of Artesyn Embedded Technologies, Inc. All other names and logos referred to are trade names, trademarks, or registered trademarks of their respective owners. © 2015 Artesyn Embedded Technologies, Inc.

For more information: [www.artesyn.com/power](http://www.artesyn.com/power)  
For support: [productsupport.ep@artesyn.com](mailto:productsupport.ep@artesyn.com)