

Excellent Integrated System Limited

Stocking Distributor

Click to view price, real time Inventory, Delivery & Lifecycle Information:

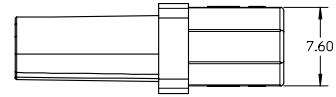
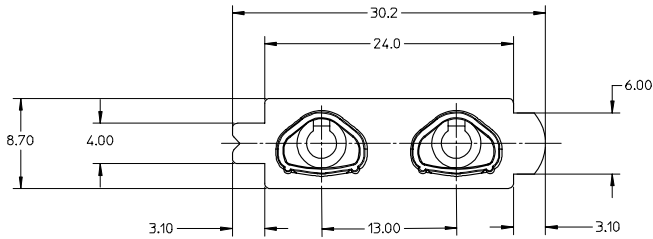
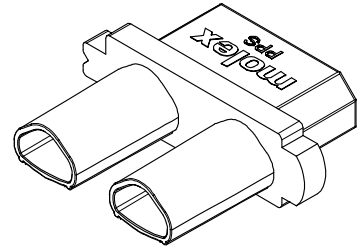
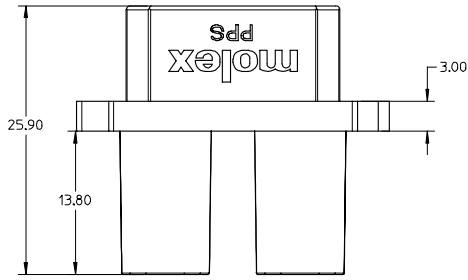
[Molex Connector Corporation](#)
[0781651001](#)

For any questions, you can email us directly:

sales@integrated-circuit.com

10 9 8 7 6 5 4 3 2 1

F
E
D
C
B
A



NOTES:

1. MATERIAL: PPS GLASS FILLED, UL94V-0, COLOR: BLACK
2. MATE WITH 78166 SERIES.
3. TERMINAL TO BE USED : P/N 78036-2001.
4. PACKAGING INFORMATION : BULK PACKAGING IN POLYBAG.
5. PRODUCT SPECIFICATION : PS-78036-001

NEW RELEASE EC NO: S2007-0748 DRAWN BY: BKOK CHKD BY: CGOH APPR/KL ING: KCL ING 2007/03/01 2007/03/01 2007/03/02	DESCRIPTION REV: A	QUALITY SYMBOLS	GENERAL TOLERANCES (UNLESS SPECIFIED)		DIMENSION STYLE MM ONLY		SCALE NTS	DESIGN UNITS METRIC	THIRD ANGLE PROJECTION																									
		▽=0 ▽=0	<table border="1"> <tr> <th></th> <th>mm</th> <th>INCH</th> </tr> <tr> <td>4 PLACES</td> <td>± 0.15</td> <td>± 0.006</td> </tr> <tr> <td>3 PLACES</td> <td>± 0.25</td> <td>± 0.010</td> </tr> <tr> <td>2 PLACES</td> <td>± 0.3</td> <td>± 0.012</td> </tr> <tr> <td>1 PLACE</td> <td>± 0.5</td> <td>± 0.020</td> </tr> </table>		mm	INCH	4 PLACES	± 0.15	± 0.006	3 PLACES	± 0.25	± 0.010	2 PLACES	± 0.3	± 0.012	1 PLACE	± 0.5	± 0.020	<table border="1"> <tr> <td colspan="2">DRAWN BY: BKOK</td> <td>DATE: 2007/02/26</td> </tr> <tr> <td colspan="2">CHECKED BY: CGOH</td> <td>DATE: 2007/03/01</td> </tr> <tr> <td colspan="2">APPROVED BY: KCL ING</td> <td>DATE: 2007/03/01</td> </tr> </table>	DRAWN BY: BKOK		DATE: 2007/02/26	CHECKED BY: CGOH		DATE: 2007/03/01	APPROVED BY: KCL ING		DATE: 2007/03/01	TITLE PROJECTOR LAMP CONNECTOR 13MM PITCH, RECEPTACLE HOUSING		MOLEX INCORPORATED			
			mm	INCH																														
		4 PLACES	± 0.15	± 0.006																														
3 PLACES	± 0.25	± 0.010																																
2 PLACES	± 0.3	± 0.012																																
1 PLACE	± 0.5	± 0.020																																
DRAWN BY: BKOK		DATE: 2007/02/26																																
CHECKED BY: CGOH		DATE: 2007/03/01																																
APPROVED BY: KCL ING		DATE: 2007/03/01																																
DRAFT WHERE APPLICABLE MUST REMAIN WITHIN DIMENSIONS		MATERIAL NO. 78165-1001	DOCUMENT NO. SD-78165-002	SHEET NO. 1 OF 1																														

9 8 7 6 5 4 3 2 1