

## Excellent Integrated System Limited

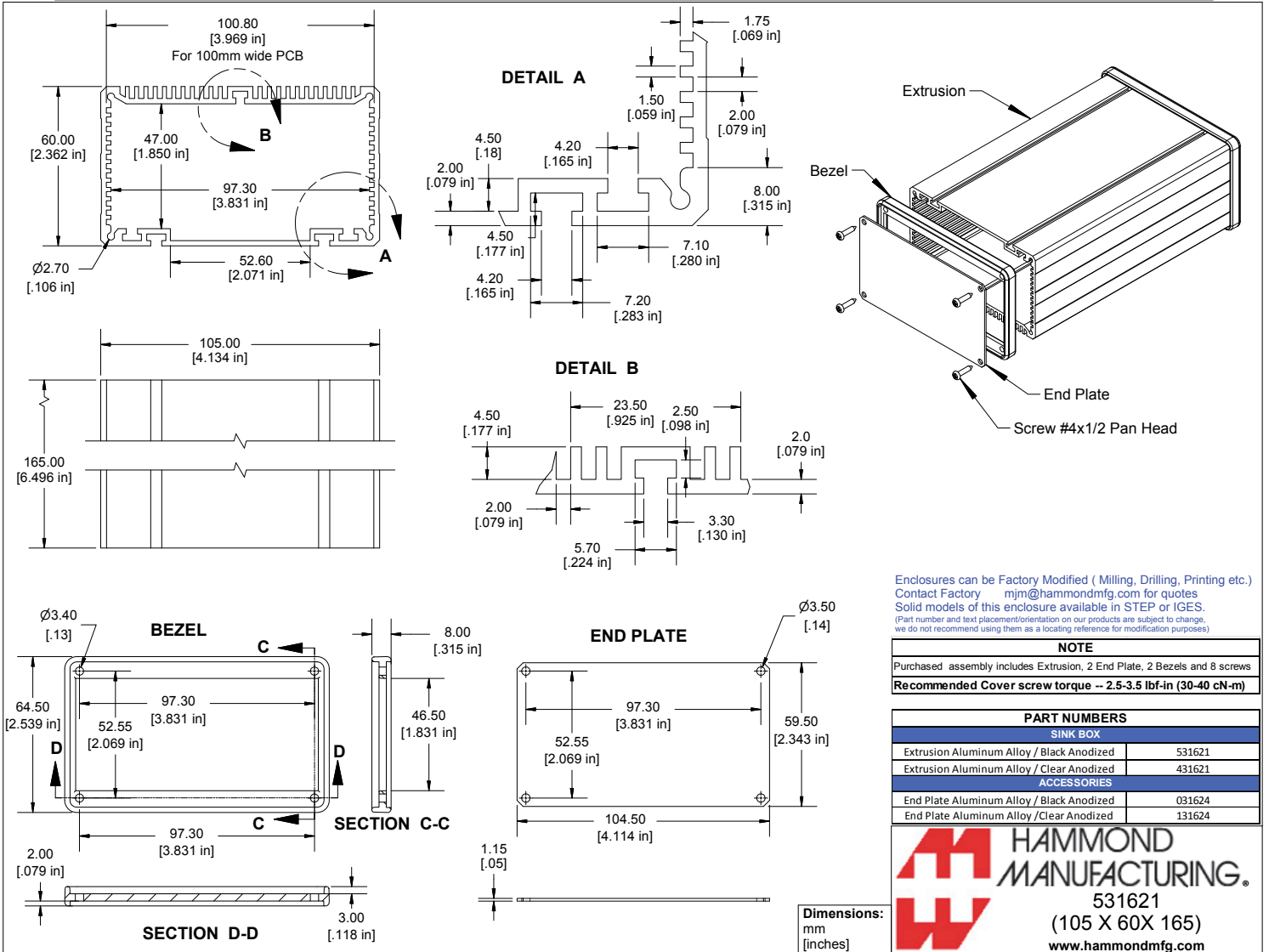
Stocking Distributor

Click to view price, real time Inventory, Delivery & Lifecycle Information:

[Hammond Manufacturing  
031624](#)

For any questions, you can email us directly:

[sales@integrated-circuit.com](mailto:sales@integrated-circuit.com)



Enclosures can be Factory Modified ( Milling, Drilling, Printing etc.)  
Contact Factory [mjm@hammondmfg.com](mailto:mjm@hammondmfg.com) for quotes  
Solid models of this enclosure available in STEP or IGES.  
(Part number and text placement/orientation on our products are subject to change,  
we do not recommend using them as a locating reference for modification purposes)

NOTE	
Purchased assembly includes Extrusion, 2 End Plate, 2 Bezels and 8 screws	
<b>Recommended Cover screw torque -- 2.5-3.5 lbf-in (30-40 cN-m)</b>	

PART NUMBERS	
<b>SINK BOX</b>	
Extrusion Aluminum Alloy / Black Anodized	531621
Extrusion Aluminum Alloy / Clear Anodized	431621
<b>ACCESSORIES</b>	
End Plate Aluminum Alloy / Black Anodized	031624
End Plate Aluminum Alloy / Clear Anodized	131624



**HAMMOND MANUFACTURING.**  
531621  
(105 X 60X 165)  
[www.hammondmfg.com](http://www.hammondmfg.com)

Dimensions:  
mm  
[inches]