

## Excellent Integrated System Limited

Stocking Distributor

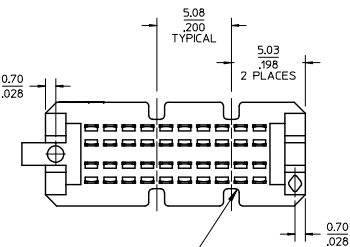
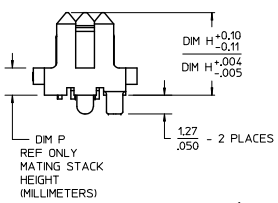
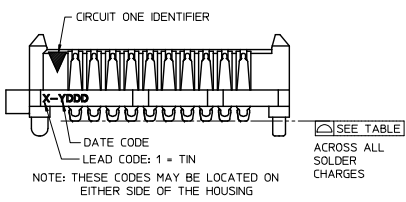
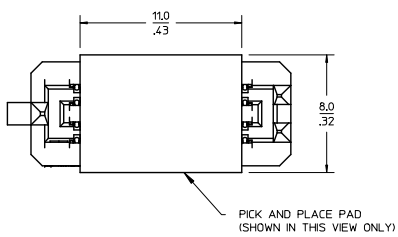
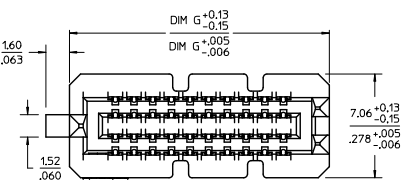
Click to view price, real time Inventory, Delivery & Lifecycle Information:

[Molex Connector Corporation](#)  
[0465562347](#)

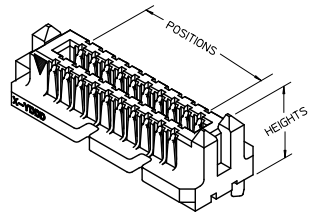
For any questions, you can email us directly:

[sales@integrated-circuit.com](mailto:sales@integrated-circuit.com)

10 9 8 7 6 5 4 3 2 1



10 POSITION SHOWN



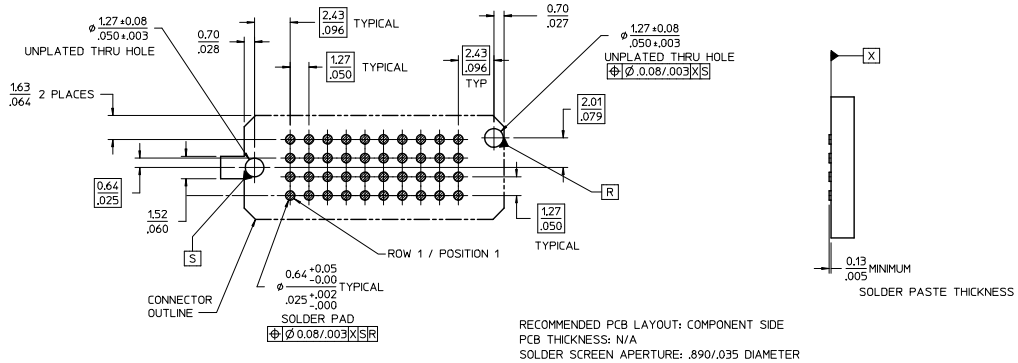
- NOTES:
- MATERIALS: HOUSING: GLASS FILLED LCP (LIQUID CRYSTAL POLYMER), UL94V-0, BLACK  
CONTACTS: COPPER ALLOY  
SOLDER CHARGE: 95.5% TIN, 3.8% SILVER, 0.7% COPPER
  - FINISHES:  
CONTACT AREA: 30 MICROINCH MINIMUM GOLD  
TAIL AREA:  
--\*1\*\* ASSEMBLIES: 7 MICROINCH MINIMUM GOLD  
ALL OTHER ASSEMBLIES: 50 MICROINCH MINIMUM TIN  
ENTIRE TERMINAL: NICKEL UNDERPLATE
  - PRODUCT SPECIFICATION: PS-45970-001
  - PACKAGING SPECIFICATION: PK-45970-002 (TAPE AND REEL)
  - MATES WITH SEARAY RECEPTACLE ASSEMBLY SERIES 46557
  - APPLICATION SPECIFICATION: AS-45970-001
  - COSMETIC SPECIFICATION: PS-45499-002 CLASS B
  - PART STATUS: CONTACT MOLEX

POSITIONS	DIM G		TOTAL NUMBER OF EDGE NOTCHES
10	17.69/1.698	0.15/.006	4
15	24.04/1.948	0.15/.006	6
20	30.39/1.198	0.15/.006	10
25	36.74/1.448	0.15/.006	12
30	43.09/1.698	0.15/.006	14
35	49.44/1.948	0.15/.006	16
40	55.79/2.198	0.15/.006	20
45	62.14/2.448	0.23/.009	22
50	68.49/2.698	0.23/.009	24

ADD PNP PAD DIMS EC NO: LCP2015-5/93 DR: WINBARKER 2015/05/18 CHKD: TBARRA 2015/08/04 APPR: SMILLER 2015/08/07	QUALITY SYMBOLS 	GENERAL TOLERANCES (UNLESS SPECIFIED)		DIMENSION STYLE		SCALE	DESIGN UNITS	THIRD ANGLE PROJECTION
				MM/IN		4:1	INCH	
				DRAWN BY DATE		TITLE		
				CHECKED BY DATE		SEARAY SLIM (4 ROW) PLUG, ASSEMBLY 1.27/.050 PITCH		
		APPROVED BY DATE		MATERIAL NO.		DOCUMENT NO.		
		ANGULAR ±1/2°		SEE TABLE SHT 3		SD-46556-001		
		DRAFT WHERE APPLICABLE MUST REMAIN WITHIN DIMENSIONS		THIS DRAWING CONTAINS INFORMATION THAT IS PROPRIETARY TO MOLEX INCORPORATED AND SHOULD NOT BE USED WITHOUT WRITTEN PERMISSION		SHEET NO. 1 OF 3		

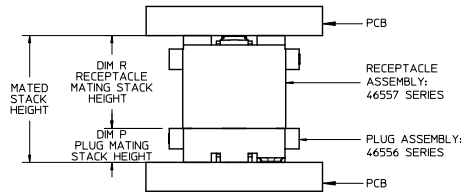
9 8 7 6 5 4 3 2 1

10 9 8 7 6 5 4 3 2 1



		DIM R RECEPTACLE STACK HEIGHT					
		MM	5.0	6.0	6.5	7.5	8.0
DIM P PLUG STACK HEIGHT	2.0	7.0	8.0	8.5	9.5	10.0	11.0
	3.0	8.0	9.0	9.5	10.5	11.0	11.5
	3.5	8.5	9.5	10.0	11.0	11.5	12.0
	2.5	7.5	8.5	9.0	10.0	10.5	11.0
	4.5	9.5	10.5	11.0	12.0	12.5	13.0
5.0	10.0	11.0	11.5	12.5	13.0	14.0	
7.0	12.0	13.0	13.5	14.5	15.0	16.0	

MATED STACK HEIGHTS  
 GIVEN IN MILLIMETERS (MM) FOR REFERENCE ONLY



STACK HEIGHTS  
 GIVEN IN MILLIMETERS (MM) FOR REFERENCE ONLY

SEE SHEET 1 E.C. NO.: ICP2015-5493 DR: WINBARKER 2015/05/18 CHKD: IBARRA 2015/08/04 APPR: MILLER 2015/08/07 REV	QUALITY SYMBOLS	GENERAL TOLERANCES (UNLESS SPECIFIED)		DIMENSION STYLE MM/IN		SCALE 4:1	DESIGN UNITS INCH	THIRD ANGLE PROJECTION
	$\sqrt{\text{R}}=0$	4 PLACES	± .010	± .010	DRAWN BY TGREGOR1	DATE 2007/05/17	TITLE SEARAY SLIM (4 ROW) PLUG, ASSEMBLY 1.27/.050 PITCH <b>molex</b> MATERIAL NO. SEE TABLE SHT 3 DOCUMENT NO. SD-46556-001 SHEET NO. 2 OF 3	
	$\sqrt{\text{R}}=0$	3 PLACES	± .015	± .015	CHECKED BY JCOMERC1	DATE 2007/05/17		
	$\sqrt{\text{R}}=0$	2 PLACES	± .025	± .025	APPROVED BY	DATE		
	1 PLACE	± .038	± .038	JCOMERC1	2010/03/05			
		0 PLACE	± .050	± .050				
		ANGULAR ±1/2° DRAFT WHERE APPLICABLE MUST REMAIN WITHIN DIMENSIONS						

9 8 7 6 5 4 3 2 1

DIM P:	2.0 MM	3.0 MM	3.5 MM	2.5 MM	4.5 MM	5.0 MM	7.0 MM
DIM H:	5.61/.221	6.60/.260	7.11/.280	6.12/.241	8.10/.319	8.61/.339	10.71/.418
POSITIONS	MATERIAL NO	MATERIAL NO	MATERIAL NO	MATERIAL NO	MATERIAL NO	MATERIAL NO	MATERIAL NO
10	46556-1145	46556-1245	46556-1345	46556-1445	46556-1545	46556-1645	46556-1745
20	46556-2145	46556-2245	46556-2345	46556-2445	46556-2545	46556-2645	46556-2745
30	46556-3145	46556-3245	46556-3345	46556-3445	46556-3545	46556-3645	46556-3745
40	46556-4145	46556-4245	46556-4345	46556-4445	46556-4545	46556-4645	46556-4745
50	46556-5145	46556-5245	46556-5345	46556-5445	46556-5545	46556-5645	46556-5745
15	46556-6145	46556-6245	46556-6345	46556-6445	46556-6545	46556-6645	46556-6745
25	46556-7145	46556-7245	46556-7345	46556-7445	46556-7545	46556-7645	46556-7745
35	46556-8145	46556-8245	46556-8345	46556-8445	46556-8545	46556-8645	46556-8745
45	46556-9145	46556-9245	46556-9345	46556-9445	46556-9545	46556-9645	46556-9745

MATING STACK HEIGHTS (DIMENSION P)  
GIVEN IN MILLIMETERS (MM) FOR REFERENCE ONLY

SEE SHEET 1 EC NO: JUCP2015-5493 DRAWN BY: DRWINBARKER 2015/05/18 CHKD: IBARRA 2015/08/04 APPR: SMILLER 2015/08/07	QUALITY SYMBOLS	GENERAL TOLERANCES (UNLESS SPECIFIED)		DIMENSION STYLE		SCALE	DESIGN UNITS	THIRD ANGLE PROJECTION
	▽=0	mm	INCH	MM/IN		1:1	INCH	
	▽=0	4 PLACES ± .---	± .---	DRAWN BY	DATE	TITLE		
	▽=0	3 PLACES ± .---	± .010	TGREGORI	2007/05/17	SEARAY SLIM (4 ROW) PLUG, ASSEMBLY 1.27/.050 PITCH		
	2 PLACES ± 0.25	± .015	CHECKED BY	DATE	molex			
	1 PLACE ± 0.38	± .---	JCOMERCI	2007/05/17	DOCUMENT NO.			
	0 PLACE ±	±	APPROVED BY	DATE	SD-46556-001			
			JCOMERCI	2010/03/05	SHEET NO.			
			MATERIAL NO. SEE TABLE		3 OF 3			
			ANGULAR ±1/2°					
			DRAFT WHERE APPLICABLE MUST REMAIN WITHIN DIMENSIONS					
			THIS DRAWING CONTAINS INFORMATION THAT IS PROPRIETARY TO MOLEX INCORPORATED AND SHOULD NOT BE USED WITHOUT WRITTEN PERMISSION					