



**Distributor of Molex Connector Corporation: Excellent Integrated System Limited**  
Datasheet of 0357252411 - Connector Quick Connect Receptacle 14-18 AWG 0.250"  
(6.35mm) Crimp

Contact us: [sales@integrated-circuit.com](mailto:sales@integrated-circuit.com) Website: [www.integrated-circuit.com](http://www.integrated-circuit.com)

---

## **Excellent Integrated System Limited**

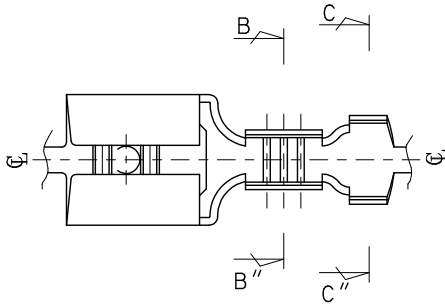
Stocking Distributor

Click to view price, real time Inventory, Delivery & Lifecycle Information:

[Molex Connector Corporation](#)  
[0357252411](#)

For any questions, you can email us directly:  
[sales@integrated-circuit.com](mailto:sales@integrated-circuit.com)

Contact us: [sales@integrated-circuit.com](mailto:sales@integrated-circuit.com) Website: [www.integrated-circuit.com](http://www.integrated-circuit.com)

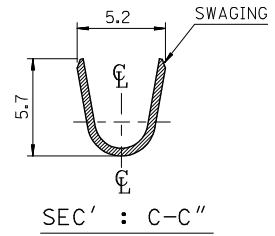
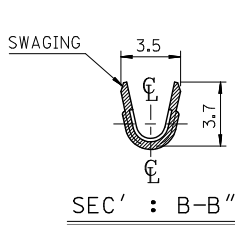
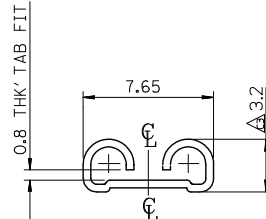
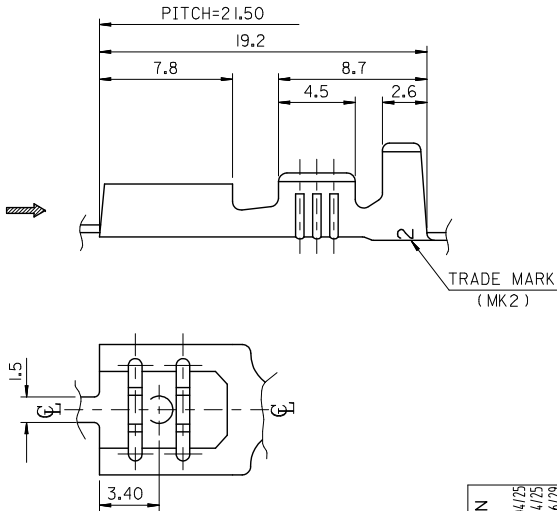


- NOTES  
 1. MATERIAL : BRASS . 0.45mm THICKNESS  
 2. PART NO. AND FINISH

PART NO.	MATERIAL NO.	FINISH	TRADE MARK
35725-2400	357252400	UNPLATED	MK2
35725-2411	357252411	POST PLATED TIN	H MK2
35725-2410	357252410	POST PLATED TIN	MK2

H (TRADE MARK) : HIGH TENSION TIN-PLATED PRODUCT

3. APPLICABLE WIRE RANGE : AWG #18 - #14  
 4. RECOMMENDED LENGTH OF WIRE STRIP IS 6.0-6.8mm



CHANGED DIMENSION EC NO.: KTR2012-0066 DRAWN BY: HIMOON 2012/04/25 CHECKED BY: BGYOON 2012/04/25 APPROVED BY: LISLE 2012/06/29	QUALITY SYMBOLS	GENERAL TOLERANCES (UNLESS SPECIFIED)	DIMENSION STYLE	SCALE	DESIGN UNITS	THIRD ANGLE PROJECTION	
	▼=0 ▽=0	mm INCH 4 PLACES ± --- ± --- 3 PLACES ± --- ± --- 2 PLACES ± 0.20 ± --- 1 PLACE ± 0.3 ± --- ANGULAR ± ---°	MM ONLY	4.5:1	METRIC	☉ □ THIRD ANGLE PROJECTION	
	DRAWN BY: HIMOON 2012/04/25 CHECKED BY: BGYOON 2012/04/25 APPROVED BY:	DRAFT WHERE APPLICABLE MUST REMAIN WITHIN DIMENSIONS	SEE TABLE	MATERIAL NO. DOCUMENT NO.	TITLE .250 SLIP-ON RECEPTACLE TERMINAL (SLOT TYPE)	MOLEX INCORPORATED	SHEET NO. 1 OF 1
	REV 3	THIS DRAWING CONTAINS INFORMATION THAT IS PROPRIETARY TO MOLEX INCORPORATED AND SHOULD NOT BE USED WITHOUT WRITTEN PERMISSION	SD-35725-002	MOLEX INCORPORATED	MOLEX INCORPORATED	MOLEX INCORPORATED	MOLEX INCORPORATED