

## Excellent Integrated System Limited

Stocking Distributor

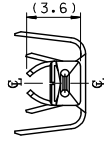
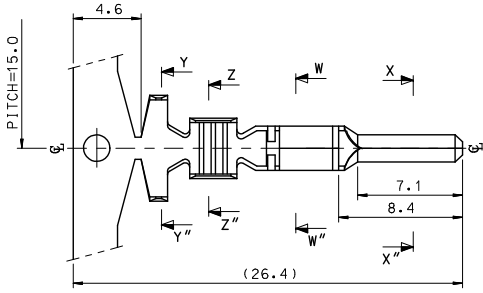
Click to view price, real time Inventory, Delivery & Lifecycle Information:

[Molex Connector Corporation](#)  
[0357470310](#)

For any questions, you can email us directly:

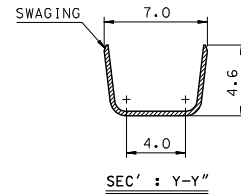
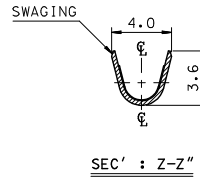
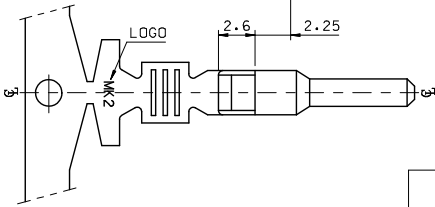
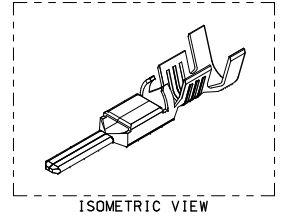
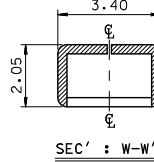
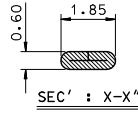
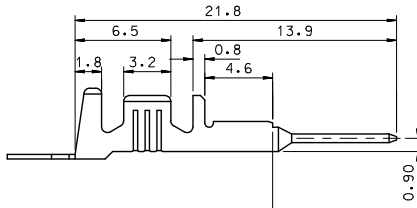
[sales@integrated-circuit.com](mailto:sales@integrated-circuit.com)

10 9 8 7 6 5 4 3 2 1



**NOTES.**

1. MATERIAL :  $\text{Cu}$  BRASS, PRE-TIN PLATED
2. FINISH : 0.8~1.8 $\mu\text{m}$  Tin(Sn) plating overall  
0.3~0.8 $\mu\text{m}$  Copper(Cu) plating
3. PRODUCT SPECIFICATION : PS-35150-001, PS-35180-002  
PS-35180-003, PS-35182-003, PS-35524-001
4. CRIMPING SPECIFICATION : CS-35745-001
5. RECOMMENDED LENGTH OF WIRE STRIP IS 4.0~4.8mm
6. APPLICABLE WIRE SIZE : AWG #20+#20  
AWG #18+#18



REVISED EC NO: KOR2009-0151 DRWN:HPARK01 CHKD:W.TANG APPR:YUNSKIM	DESCRIPTION 2009/05/18 2009/06/18 2009/07/01	QUALITY SYMBOLS	GENERAL TOLERANCES (UNLESS SPECIFIED)	DIMENSION STYLE	SCALE	DESIGN UNITS	THIRD ANGLE PROJECTION		
		▼=0 ▽=0	mm INCH 4 PLACES ± --- ± --- 3 PLACES ± --- ± --- 2 PLACES ± 0.2 ± --- 1 PLACE ± 0.3 ± --- ANGULAR ± 1°	MM ONLY	4:1	METRIC	DRAWN BY JS.KANG DATE 1998/01/19 CHECKED BY BK.CHOI DATE 1998/01/19 APPROVED BY CW.LEE DATE 1998/01/19	TITLE	
		DRAFT WHERE APPLICABLE MUST REMAIN WITHIN DIMENSIONS			MATERIAL NO.	DOCUMENT NO.		SHEET NO.	
					357470310	SD-35747-002		1 OF 01	

**.070 MALE TERMINAL-B (LARGE)**

**MOLEX INCORPORATED**

9 8 7 6 5 4 3 2 1