

Excellent Integrated System Limited

Stocking Distributor

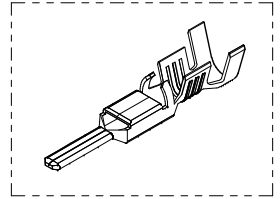
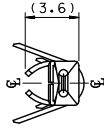
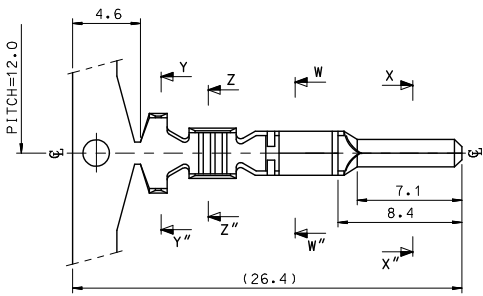
Click to view price, real time Inventory, Delivery & Lifecycle Information:

[Molex Connector Corporation](#)
[0357470110](#)

For any questions, you can email us directly:

sales@integrated-circuit.com

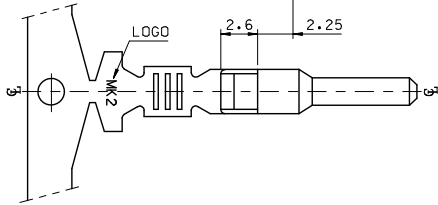
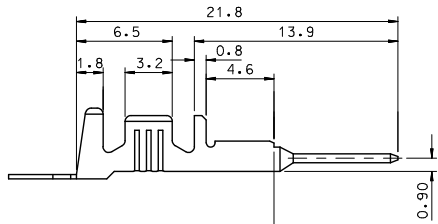
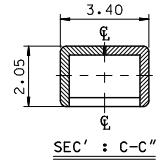
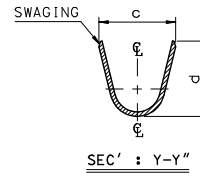
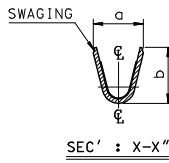
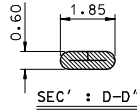
10 9 8 7 6 5 4 3 2 1



ISOMETRIC VIEW

NOTES.

1. MATERIAL : \odot BRASS, PRE-TIN PLATED
2. FINISH : 0.8~1.8 μ m,Tin(Sn) plating overall
0.3~0.8 μ m,Copper(Cu) plating
3. PRODUCT SPECIFICATION : PS-35150-001, PS-35180-002
PS-35180-003, PS-35524-001
4. CRIMPING SPECIFICATION : CS-35745-001
5. RECOMMENDED LENGTH OF WIRE STRIP IS 4.0~4.8mm



MATERIAL NO	ENG. No.	AWG	a	b	c	d	PITCH "P"
357470210	35747-0210	#18-#14	3.4	3.8	5.2	4.8	12.0
357470110	35747-0110	#22-#20	2.85	2.8	4.2	4.0	10.6
357470410	35747-0410	#24	2.2	1.75	3.85	3.5	10.6

REVISED EC NO: KOR2009-0151 TIDRAWN: JHPARK01 CHKCD: 2009/06/18 APPR: SUNS IKKIM 2009/07/01	QUALITY SYMBOLS	GENERAL TOLERANCES (UNLESS SPECIFIED)	DIMENSION STYLE	SCALE	DESIGN UNITS	THIRD ANGLE PROJECTION
	$\nabla=0$	mm INCH	MM ONLY	4:1	METRIC	
	$\nabla=0$	4 PLACES \pm --- \pm ---	DRAWN BY DATE	TITLE	.070 MALE TERMINAL (B-TYPE)	
		3 PLACES \pm --- \pm ---	JS.KANG 1998/01/19	1998/01/19	MOLEX INCORPORATED	
	2 PLACES \pm 0.2 \pm ---	CHECKED BY DATE	MATERIAL NO. DOCUMENT NO. SHEET NO.			
	1 PLACE \pm 0.3 \pm ---	BK.CHOI 1998/01/19	SD-35747-001 1 OF 01			
	ANGULAR \pm 1°	APPROVED BY DATE	THIS DRAWING CONTAINS INFORMATION THAT IS PROPRIETARY TO MOLEX INCORPORATED AND SHOULD NOT BE USED WITHOUT WRITTEN PERMISSION			
		CW.LEE 1998/01/19				
	DRAFT WHERE APPLICABLE MUST REMAIN WITHIN DIMENSIONS	SIZE				
		A3				

9 8 7 6 5 4 3 2 1