

Excellent Integrated System Limited

Stocking Distributor

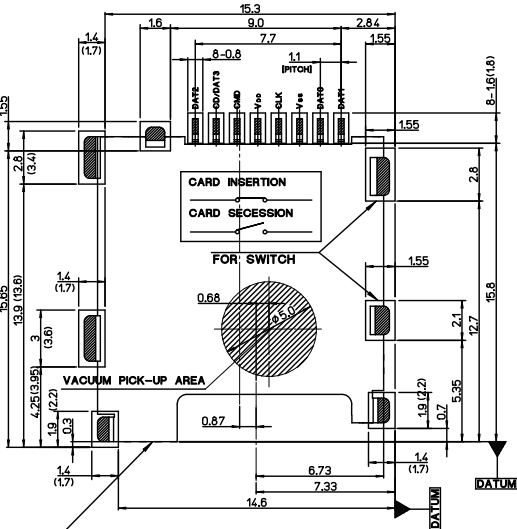
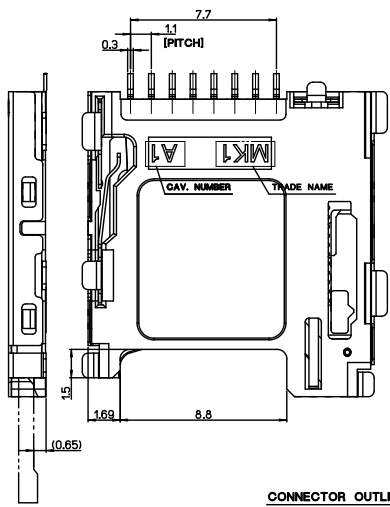
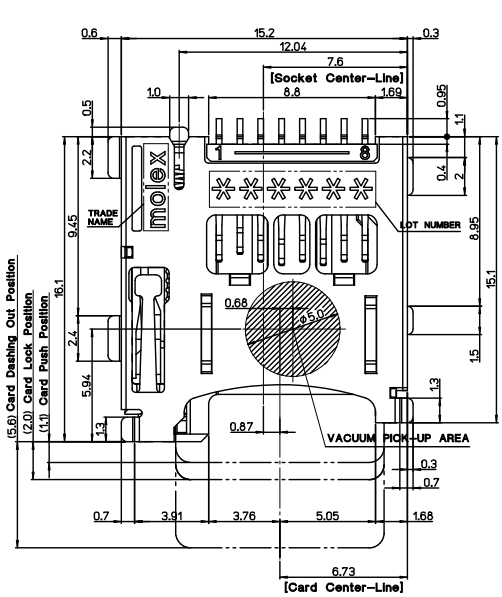
Click to view price, real time Inventory, Delivery & Lifecycle Information:

[Molex Connector Corporation](#)
[0492250821](#)

For any questions, you can email us directly:

sales@integrated-circuit.com

10 9 8 7 6 5 4 3 2 1



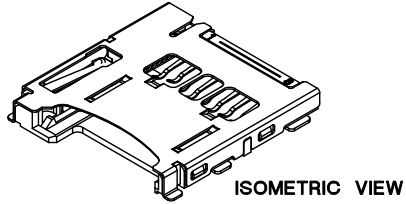
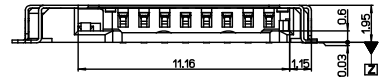
CONNECTOR OUTLINE RECOMMENDED PCB PATTERN LAYOUT TOLERANCE : ±0.05

* Normal DIM : Limited
* (DIM.) : Recommend

NOTES

1. MATERIALS: SEE TABLE
2. FINISHES: SEE TABLE
3. PRODUCT SPECIFICATION : PS-49225-001
4. COPLANARITY OF SOLDER TAIL : 0.1mm MAX. MISALIGNMENT OF SOLDER TAIL FROM "Z" UPPER DIRECTION 0.05 MAX., LOWER DIRECTION 0.1MAX.
5. PACKAGING SPECIFICATION : PK-49225-201

This connector has been tested for compatibility with both TransFlash and microSD cards, however, as this standard is in transition some specifications from different card makers may differ. Please contact Molex Korea before any design-in to discuss card compatibility issues



492250821	49225-0821
MATERIAL NO.	ENGINEERING NO.

REVISED EC NO.: B DRAWN: SINGHYUK DO 2010/02/23 CHKD: ISOOKIM APPR:	QUALITY SYMBOLS ▽=0 ▽=0	GENERAL TOLERANCES (UNLESS SPECIFIED)		DIMENSION STYLE		SCALE	DESIGN UNITS	THIRD ANGLE	
		mm	INCH	MM ONLY		5:1	METRIC	PROJECTION	
		4 PLACES ±---	±---	DRAWN BY	DATE	TITLE			
		3 PLACES ±---	±---	S. H. JOO	2005/09/14	M-SD MEMORY CARD SOCKET P/P, REVERSE, WITH SWT LOW RETENTION FORCE			
2 PLACES ±0.15	±---	CHECKED BY	DATE	APPROVED BY		DATE	MOLEX INCORPORATED		
1 PLACE ±0.20	±---	ANGULAR ± 1°		S. J. SEH	2005/09/14	DOCUMENT NO.		SHEET NO.	
DRAFT WHERE APPLICABLE MUST REMAIN WITHIN DIMENSIONS				SEE TABLE		SD-49225-201		1 OF 3	
THIS DRAWING CONTAINS INFORMATION THAT IS PROPRIETARY TO MOLEX INCORPORATED AND SHOULD NOT BE USED WITHOUT WRITTEN PERMISSION									

9 8 7 6 5 4 3 2 1

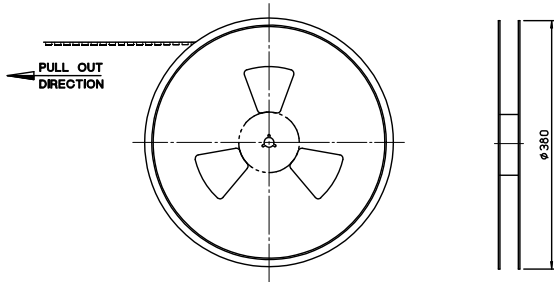
10 9 8 7 6 5 4 3 2 1

⑨	SPRING	49225-9001	STAINLESS STEEL	
⑧	PIN ROD	49225-9002	STAINLESS STEEL	
⑦	STOPPER TERMINAL	49772-8003	PHOS.-BRONZE	PURE-Sn over Ni
⑥	GND. TERMINAL	49771-8003	PHOS.-BRONZE	Selective-Au over Ni
⑤	SWITCH TERMINAL	49770-8003	PHOS.-BRONZE	Selective-Au over Ni
④	HEART CAM	49355-0001	LIQUID CRYSTAL POLYMER	Natural Color
③	HOUSING	49225-0891	LIQUID CRYSTAL POLYMER	
②	METAL SHELL	49769-5003	STAINLESS STEEL	Selective-Au over Ni
①	CONTACT TERMINAL 1,2,3	49768-8*30	PHOS.-BRONZE	Selective-Au over Ni
NO.	DESCRIPTION	ENGINEERING NO.	MATERIALS	FINISHES

REVISED EC NO: B APPR: DESCRIPTION DRWN: SINGH/UK:00 2010/02/23 CHKD: SODK/IN	QUALITY SYMBOLS	GENERAL TOLERANCES (UNLESS SPECIFIED)	DIMENSION STYLE	SCALE	DESIGN UNITS	THIRD ANGLE PROJECTION
	▽=0	4 PLACES ± --- ± ---	MM ONLY	5:1	METRIC	☉
	▽=0	3 PLACES ± --- ± ---	DRAWN BY DATE			
		2 PLACES ± 0.15 ± ---	S. H. JOO 2005/09/14	TITLE		
	1 PLACE ± 0.20 ± ---	CHECKED BY DATE				
	ANGULAR ± 1 °	APPROVED BY DATE				
		S. J. SEH 2005/09/14				
		MATERIAL NO.	SEE TABLE	DOCUMENT NO.	SD-49225-201	SHEET NO. 2 OF 3
		SIZE	A3	THIS DRAWING CONTAINS INFORMATION THAT IS PROPRIETARY TO MOLEX INCORPORATED AND SHOULD NOT BE USED WITHOUT WRITTEN PERMISSION		

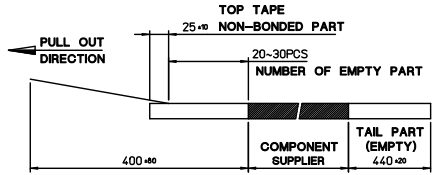
9 8 7 6 5 4 3 2 1

10 9 8 7 6 5 4 3 2 1

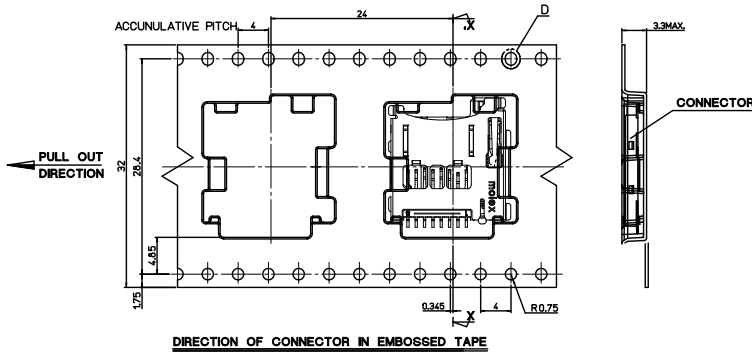


NOTES

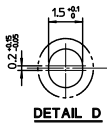
- 1. QUANTITY OF CONNECTORS : 1,100PCS/REEL
- 2. LEAD LENGTH



- 3. PEELING OFF FORCE OF COVER TAPE : 0.1N~0.59N(10.2GF~80GF)
(PEELING DIRECTION AS SHOW IN FOLLOW FIG.)
- PEELING OFF SPEED : 300mm/Min.(Ref.)



35902-1011	35908-1003	35902-2108	49225-0811	492250817	49225-0817	8
COVER TAPE	REEL	EMBOSSED TAPE	CONNECTOR	MATERIAL NO.	ENG. NO.	CKT



REVISED EC NO: B DRAWN: SINGHVIK:00 2010/02/23 CHKD: TSOKIM APPR: REV	QUALITY SYMBOLS	GENERAL TOLERANCES (UNLESS SPECIFIED) 4 PLACES ± --- ± --- 3 PLACES ± --- ± --- 2 PLACES ± 0.15 ± --- 1 PLACE ± 0.20 ± --- ANGULAR ± 1 °	DIMENSION STYLE	SCALE	DESIGN UNITS	THIRD ANGLE PROJECTION	
			MM ONLY	2:1	METRIC		
			DRAWN BY	DATE	TITLE		
			CHECKED BY	DATE			
			APPROVED BY	DATE	MATERIAL NO.	DOCUMENT NO.	
			S. J. SEH	2005/09/14	SEE TABLE	SD-49225-201	
			DRAFT WHERE APPLICABLE MUST REMAIN WITHIN DIMENSIONS				SHEET NO. 3 OF 3
			THIS DRAWING CONTAINS INFORMATION THAT IS PROPRIETARY TO MOLEX INCORPORATED AND SHOULD NOT BE USED WITHOUT WRITTEN PERMISSION				

9 8 7 6 5 4 3 2 1

9	SPRING	49225-9001	STAINLESS STEEL	
8	PIN ROD	49225-9002	STAINLESS STEEL	
7	STOPPER TERMINAL	49772-8003	PHOS.-BRONZE	PURE-Sn over Ni
6	GND. TERMINAL	49771-8003	PHOS.-BRONZE	Selective-Au over Ni
5	SWITCH TERMINAL	49770-8003	PHOS.-BRONZE	Selective-Au over Ni
4	HEART CAM	49355-0001	LIQUID CRYSTAL POLYMER	Natural Color
3	HOUSING	49225-0891	LIQUID CRYSTAL POLYMER	
2	METAL SHELL	49769-5003	STAINLESS STEEL	Selective-Au over Ni
1	CONTACT TERMINAL 1,2,3	49768-8*30	PHOS.-BRONZE	Selective-Au over Ni
NO.	DESCRIPTION	ENGINEERING NO.	MATERIALS	FINISHES

DWG. NO. SD-49225-201
 SIMILAR ITEM
 PROJECT NO.
 C
 B
 DO NOT SCALE DRAWING DIMENSION IN METRIC

NEW RELEASE ECN NO. KOR2007-0077 DRWN: S.H.JOO 06/12/28 CHK: APPR: S.J.SEH A	QUALITY SYMBOLS MAJOR CRITICAL REV DESCRIPTION	GENERAL TOLERANCES: (UNLESS SPECIFIED)	SCALE 5 / 1	DESIGN UNITS <input checked="" type="checkbox"/> mm <input type="checkbox"/> INCH	THIRD ANGLE PROJECTION 	MATERIAL NO. 49225-0821 ENGINEERING NO.
		4 PLACES ± 0.1 3 PLACES ± 0.15 2 PLACES ± 0.2 1 PLACE ± 0.2	DRAWN BY & DATE S.H.JOO 05/09/14	CHECKED BY & DATE S.H.JOO	APPROVED BY & DATE S.J.SEH	TITLE: microSD MEMORY CARD SOCKET PUSH-PUSH / REVERSE TYPE / WITH SWITCH (LOW RETENTION FORCE VERSION)
CAD FILENAME SD49225002.MI		MATERIAL NO. SEE TABLE	DRAWING NO. SD-49225-201	SHEET NO. 1 OF 2	KOREA MX-A3	
THIS DRAWING CONTAINS INFORMATION THAT IS PROPRIETARY TO MOLEX INCORPORATED AND SHOULD NOT BE USED WITHOUT WRITTEN PERMISSION.						

8 7 6 5 4 3 2 1