

Excellent Integrated System Limited

Stocking Distributor

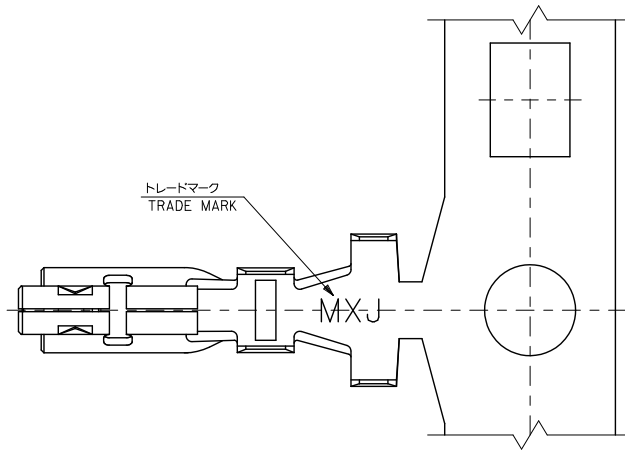
Click to view price, real time Inventory, Delivery & Lifecycle Information:

[Molex Connector Corporation](#)
[0561349000](#)

For any questions, you can email us directly:

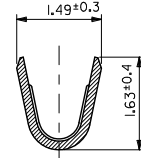
sales@integrated-circuit.com

10 9 8 7 6 5 4 3 2 1

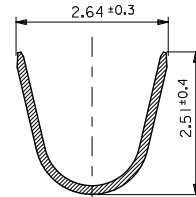


**注記
NOTES**

1. 使用材料 : 銅合金, 銅メッキ (t=0.15)
MATERIAL : PRE-TINNED COPPER ALLOY
2. 適合ハウジング : 51242, 51382, 51353シリーズ
APPLICABLE HOUSING : 51242, 51382, 51353 SERIES
3. ELV及びRoHS適合品
ELV AND RoHS COMPLIANT.

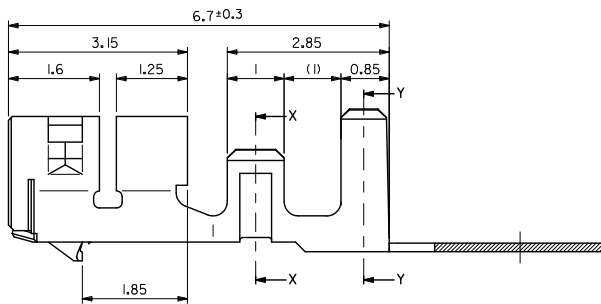
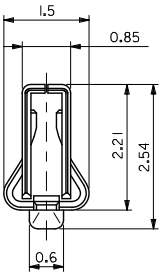


SECT. X-X



SECT. Y-Y

無鉛
LEAD FREE



56134-9100	バラ状 LOOSE
56134-9000	連続状 CHAIN
MATERIAL NO.	端子形状 FORM

MATERIAL 材料	FINISH 仕上げ
注記参照 SEE NOTES	//
WIRE RANGE 適用電線範囲	
AWG#22-#28 : 0.079-0.34mm ² KV0.2-0.4 : 0.2-0.4mm ²	
INS. RANGE 検査外径	
∅0.9 ~ ∅1.7 mm	

REVISED REV	DESCRIPTION	GENERAL TOLERANCES (UNLESS SPECIFIED)
1	2011/01/20 DRAWN HORI CHIKIDAKAWA	10 UNDER ±0.2
2	2011/01/20 CHECKED KASAKAWA	10 OVER 30 UNDER ±0.25
3	2011/01/21 APPROVED NIKITA	30 OVER ±0.3
		ANGULAR ±3°
		DRAFT WHERE APPLICABLE MUST REMAIN WITHIN DIMENSIONS

DIMENSION STYLE MM ONLY	SCALE 15:1	DESIGN UNITS METRIC	THIRD ANGLE PROJECTION
DRAWN BY NITO	DATE 2002/02/28	TITLE 2.0 WIRE TO BOARD CONN. CRIMP RECEPTACLE	
CHECKED BY KASAKAWA	DATE 2003/06/12		
APPROVED BY	DATE		
MATERIAL NO.	DOCUMENT NO.	MOLEX INCORPORATED	
SEE CHART	SD-56134-005	SHEET NO. 1 OF 1	
THIS DRAWING CONTAINS INFORMATION THAT IS PROPRIETARY TO MOLEX INCORPORATED AND SHOULD NOT BE USED WITHOUT WRITTEN PERMISSION			