



**Distributor of Molex Connector Corporation: Excellent Integrated System Limited**  
Datasheet of 0357253410 - Connector Quick Connect Receptacle 14-18 AWG 0.250"  
(6.35mm) Crimp

Contact us: [sales@integrated-circuit.com](mailto:sales@integrated-circuit.com) Website: [www.integrated-circuit.com](http://www.integrated-circuit.com)

---

## **Excellent Integrated System Limited**

Stocking Distributor

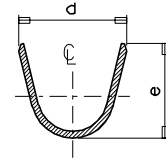
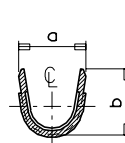
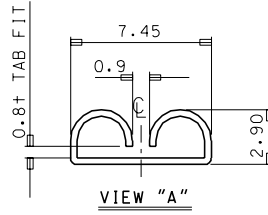
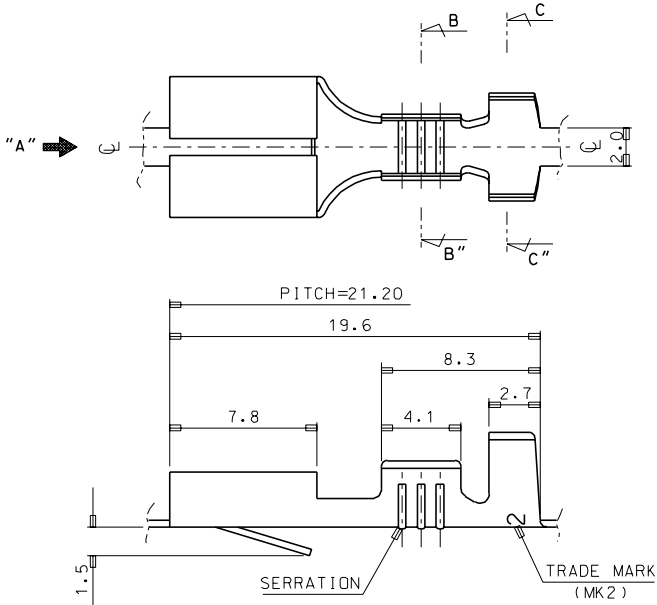
Click to view price, real time Inventory, Delivery & Lifecycle Information:

[Molex Connector Corporation](#)  
[0357253410](#)

For any questions, you can email us directly:  
[sales@integrated-circuit.com](mailto:sales@integrated-circuit.com)

Contact us: [sales@integrated-circuit.com](mailto:sales@integrated-circuit.com) Website: [www.integrated-circuit.com](http://www.integrated-circuit.com)

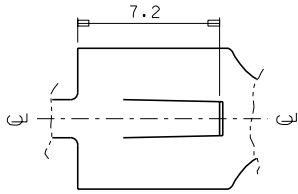
1. MATERIAL : BRASS, 0.35mm THICKNESS  
THICKNESS : 0.35 mm
2. FINISH : UNPLATED(35725-3300/3400/3500)  
POST-TIN PLATING(35725-3310/3410/3510)
3. RECOMMENDED LENGTH OF WIRE STRIP IS 5.2-5.8 mm



SECTION B-B''

SECTION C-C''

ENG. NO.	a	b	d	e	WIRE RANGE	Q'TY/REEL
35725-33*0	5.2	4.6	6.3	6.3	AWG #14-#10	4,000
35725-34*0	3.5	3.5	5.7	5.0	AWG #18-#14	5,000
35725-35*0	2.85	2.9	3.8	3.8	AWG #22-#20	5,000



WIRE RANGE SEE TABLE					MATERIAL SEE NOTES	MOLEX-KOREA CO.,LTD.	
INSULATION RANGE //	B	REVISED	95-007	95.1.17	GENERAL TOLERANCE DIMENSION : 1Pics:±0.30 ANGLE+ 2Pics:±0.20	DRAWN BY J. S. KANG	CHK'D BY
DIE FEED: //	A	CAD REDRAWING		93.6.3	DIMENSION CLASSIFICATION ▽: CRITICAL ▼: MAJOR ( ): REFERENCE	APP'D BY	SCALE 5:1 (CAD)
APPLICATOR FEED: 21.2	LTR	REVISION RECORD	ECN	DATE	ASS'Y PART DESCRIPTION ENG. NO.	TITLE: .250 SLIP-IN REC'	
Q'TY/ REEL OR PACK SEE TABLE	REVISE ONLY ON CAD SYSTEM				//	ENG. NO. SD 35725-3*0	SHEET 1 OF 1 REV B

THIS DRAWING CONTAINS INFORMATION THAT IS PROPRIETARY TO MOLEX(KOREA) AND SHOULD NOT BE USED WITHOUT WRITTEN PERMISSION  
MX-A3(ANSI:290,420)

ENG. NO. SD 35725-3\*0  
EDP NO.  
SIMILAR ITEM  
PROJECT NO. .250 SLIP-IN REC'