

Excellent Integrated System Limited

Stocking Distributor

Click to view price, real time Inventory, Delivery & Lifecycle Information:

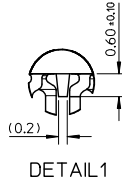
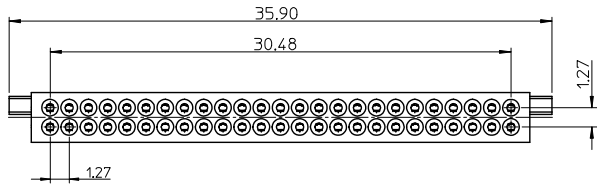
[Molex Connector Corporation](#)

[0677990004](#)

For any questions, you can email us directly:

sales@integrated-circuit.com

10 9 8 7 6 5 4 3 2 1



NOTE:

1.MATERIAL:

- HOUSING, HIGH TEMPERATURE POLYMER.
- TERMINAL, COPPER ALLOY.
- GROUNDING CLIP, COPPER ALLOY.

2.FINISH: TERMINAL:

- NICKEL OVERALL THICKNESS 0.5 MICRON MINIMUM.
- CONTACT AREA(SEE TABLE):
 - a. SELECTIVE GOLD 0.1 MICRON MINIMUM OVER PALLADIUM/NICKEL 0.5 MICRON MINIMUM.
 - b. SELECTIVE GOLD 0.75 MICRON MINIMUM OVER NICKEL 0.5 MICRON MINIMUM (FOR P/N:67799-0008).
- SOLDER AREA:(SEE TABLE)
 - a.MATTE TIN /TIN-LEAD 5.0 MICRON MINIMUM
 - b.GOLD FLASH 0.05 MICRON MINIMUM.

GROUNDING CLIP:

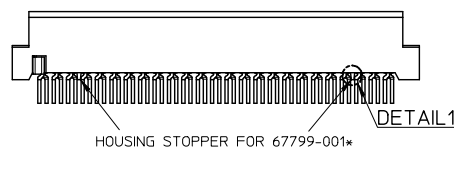
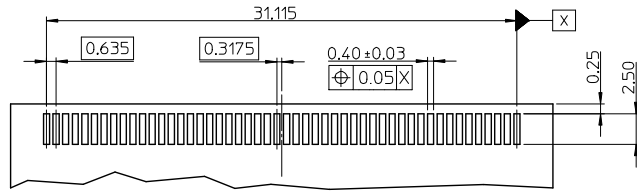
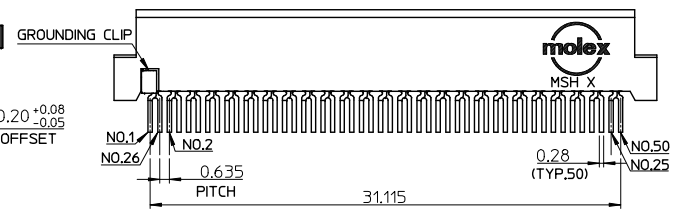
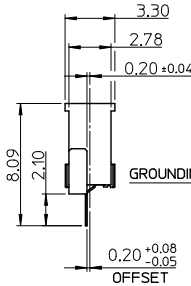
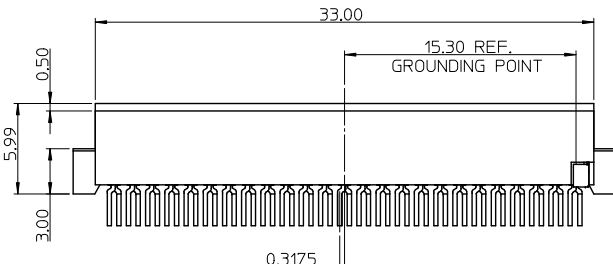
- GOLD FLASH OVERALL OVER NICKEL 1.25 MICRON MINIMUM.

3.TERMINAL COPLANARITY 0.08mm MAXIMUM.

4.PRODUCT SPECIFICATION: PS-67799-001.

5.PACKAGE: PK-67799-001.

6.GROUNDING CLIP CONDUCTS WITH TERMINAL NO.1, NO.26.

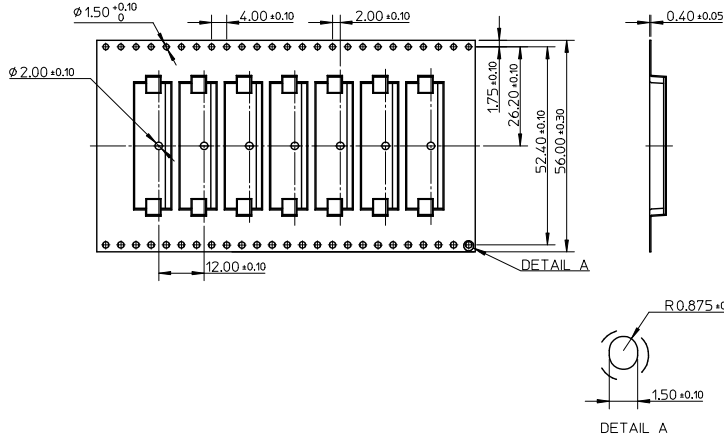


PLATING TYPE IN SOLDER TAIL	MATTE TIN PLATING		GOLD FLASH PLATING		CONTACT AREA: 30U' GOLD SOLDER TAIL: GOLD FLASH	
HOUSING STOPPER	WITHOUT	WITH	WITHOUT	WITH	WITHOUT	WITH
MATERIAL NO.	67799-0004	67799-0014	67799-0007	67799-0017	67799-0008	67799-0018

REVISED CARRIER TAPE EC NO: SZ014-0266 DRWN:JZENG 2013/09/12 CHKD:JIANZ 2013/10/22 APPR:KHLIM 2013/10/28 REV L1	QUALITY SYMBOLS √=0 ∇=0 ∇=0	GENERAL TOLERANCES (UNLESS SPECIFIED)		DIMENSION STYLE MM ONLY		SCALE 1:1	DESIGN UNITS METRIC	THIRD ANGLE PROJECTION	
		mm	INCH	DRAWN BY BRAD	DATE 2003/02/20	TITLE 50 CKT CF RECEPTACLE SMT TYPE B, OFFSET 0.20MM			
		4 PLACES ± ---	± ---	CHECKED BY WILSON	DATE 2003/02/20	molex MATERIAL NO. SD-67799-004 DOCUMENT NO. SD-67799-004 SHEET NO. 1 OF 2			
		3 PLACES ± ---	± ---	APPROVED BY AYIN	DATE 2012/10/26				
ANGULAR ± 3 °		DRAFT WHERE APPLICABLE MUST REMAIN WITHIN DIMENSIONS		SEE TABLE		THIS DRAWING CONTAINS INFORMATION THAT IS PROPRIETARY TO MOLEX INCORPORATED AND SHOULD NOT BE USED WITHOUT WRITTEN PERMISSION			

9 8 7 6 5 4 3 2 1

10 9 8 7 6 5 4 3 2 1



NOTES:

1. MATERIAL: POIYSTYRENE, THICKNESS: 0.40±0.05mm.
2. COMPONENT LOAD PER 13" REEL: 1,000 PCS.

SEE SHEET 1 IEC NO. S2014-0266 DRAWN: ZENG 2013/09/12 CHECKED: JIANG 2013/10/22 APPROVED: LI 2013/10/28	QUALITY SYMBOLS √=0 ∇=0 ∇=0	GENERAL TOLERANCES (UNLESS SPECIFIED)		DIMENSION STYLE MM ONLY		SCALE 1:1	DESIGN UNITS METRIC	THIRD ANGLE PROJECTION
		4 PLACES ± --- ± --- 3 PLACES ± --- ± --- 2 PLACES ± 0.25 ± --- 1 PLACE ± 0.25 ± --- 0 PLACE ± ±	mm INCH DRAWN BY DATE BRAD 2003/02/20 CHECKED BY DATE WILSON 2003/02/20 APPROVED BY DATE AYIN 2012/10/26	TITLE 50 CKT CF RECEPTACLE SMT TYPE B, OFFSET 0.20MM				
L1 REV	DESCRIPTION	ANGULAR ± 3 ° DRAFT WHERE APPLICABLE MUST REMAIN WITHIN DIMENSIONS		MATERIAL NO. SEE SHEET 1		DOCUMENT NO. SD-67799-004	SHEET NO. 2 OF 2	

9 8 7 6 5 4 3 2 1