

Excellent Integrated System Limited

Stocking Distributor

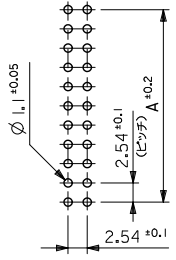
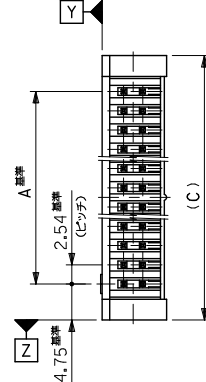
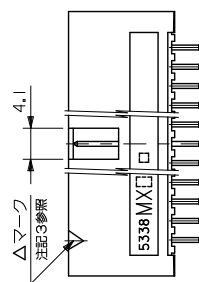
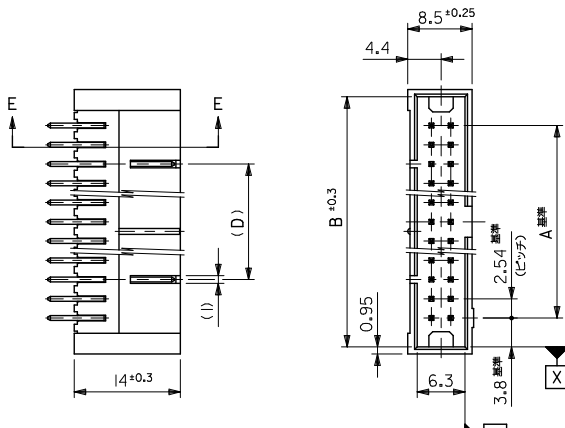
Click to view price, real time Inventory, Delivery & Lifecycle Information:

[Molex Connector Corporation](#)
[0039536104](#)

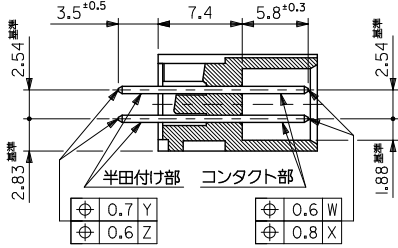
For any questions, you can email us directly:

sales@integrated-circuit.com

10 9 8 7 6 5 4 3 2 1



基板取付穴推奨寸法



SECT. E-E
(SCALE 3-1)

注記

- 材料 ウエハー : ガラス繊維 15% 入り PBTP (UL94V-0), 黒色
ピン : 黄銅, サイズ □0.635
- 嵌合相手 : 5320 シリーズ
- 使用符号の説明
ベースナンバー _____ 5332 - N *
極数 _____
ピンのメッキコード _____

コード*	△マークの色	コンタクト部	半田付け部	下地メッキ
GS3	青	金 0.25μm MIN.	半田 3μm MIN.	
LEAD-FREE GS17F	黄	金 0.1μm MIN.	錫 1μm MIN.	ニッケル 1μm MIN.
LEAD-FREE GS37F	青	金 0.25μm MIN.		
LEAD-FREE T2	黒		錫 1μm MIN.	ニッケル 0.5μm MIN.

60	73.66	81.26	83.16	63.50
50	60.96	68.56	70.46	50.80
40	48.26	55.86	57.76	38.10
34	40.64	48.24	50.14	30.48
30	35.56	43.16	45.06	25.40
26	30.48	38.08	39.98	—
20	22.86	30.46	32.36	—
16	17.78	25.38	27.28	—
14	15.24	22.84	24.74	—
10	10.16	17.76	19.66	—
極数	A寸法	B寸法	C寸法	D寸法

REVISED EC NO. J2012-0302 DRAWN HIRAHONOGAWA 2011/08/31 CHIKO INIITSU 2011/08/31 APPROVED BY YAGI 2011/09/07	GENERAL TOLERANCES (UNLESS SPECIFIED)	DIMENSION STYLE MM ONLY	SCALE 2:1	DESIGN UNITS METRIC	THIRD ANGLE PROJECTION	
	10 UNDER ±0.2 10 OVER 30 UNDER ±0.25 30 OVER ±0.3	DRAWN BY H. HIRAHONOGAWA DATE 1990/06/19	CHECKED BY M. SASAO DATE	TITLE QIK FLECS WAFER ASSY ST JAPANESE ONLY		
	ANGULAR ±3° DRAFT WHERE APPLICABLE MUST REMAIN WITHIN DIMENSIONS	APPROVED BY H. IKESUGI DATE	MATERIAL NO. SEE SHEET 2 OF 2	MOLEX INCORPORATED		
		SIZE A3	THIS DRAWING CONTAINS INFORMATION THAT IS PROPRIETARY TO MOLEX INCORPORATED AND SHOULD NOT BE USED WITHOUT WRITTEN PERMISSION			SHEET NO. 1 OF 2

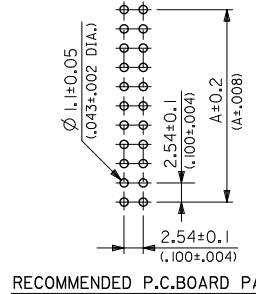
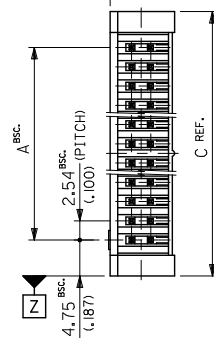
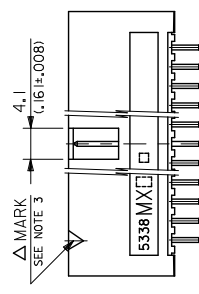
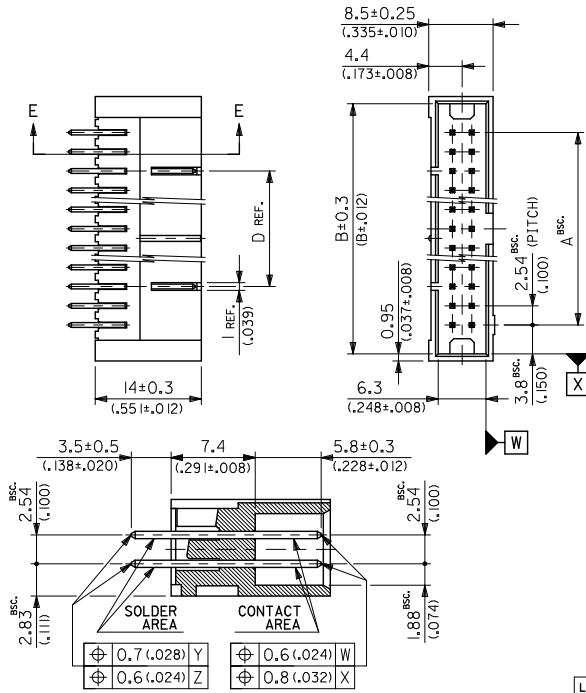
10 9 8 7 6 5 4 3 2 1

F
E
D
C
B
A

39-53-6266	5332-26GS37F	39-28-5261	5332-26T2	26
→→	→→	↓-5201	-20T2	20
→→	→→	39-28-5141	5332-14T2	14
EDP NO.	ENG. NO.	EDP NO.	ENG. NO.	極数
5332-NGS37F	-LEAD FREE-	5332-NT2	-LEAD FREE-	
39-53-6344	5332-34GS17F	→→	→→	34
↓-6264	↓-26GS17F	39-26-7267	5332-26GS3	26
↓-6204	↓-20GS17F	→→	→→	20
↓-6144	↓-14GS17F	→→	→→	14
39-53-6104	5332-10GS17F	→→	→→	10
EDP NO.	ENG. NO.	EDP NO.	ENG. NO.	極数
5332-NGS17F	-LEAD FREE-	5332-NGS3		

REVISED EC NO. J2012-0302 DRAWN H. HIRAMOTO 2011/08/31 CHECKED M. SASAO 2011/08/31 APPROVED H. IKESUGI 2011/09/07	DESCRIPTION	GENERAL TOLERANCES (UNLESS SPECIFIED)	DIMENSION STYLE MM ONLY	SCALE 2:1	DESIGN UNITS METRIC	THIRD ANGLE PROJECTION
	REV	10 UNDER ± 0.2	DRAWN BY H. HIRAMOTO	DATE 1990/06/19	TITLE QIK FLECS WAFER ASSY ST. JAPANESE ONLY	
		10 OVER 30 UNDER ± 0.25	CHECKED BY M. SASAO	DATE	MOLEX INCORPORATED	
		30 OVER ± 0.3	APPROVED BY H. IKESUGI	DATE	DOCUMENT NO. SD-5332-001	
		ANGULAR ± 3 °	MATERIAL NO.	SEE CHART	SHEET NO. 2 OF 2	
	DRAFT WHERE APPLICABLE MUST REMAIN WITHIN DIMENSIONS	THIS DRAWING CONTAINS INFORMATION THAT IS PROPRIETARY TO MOLEX INCORPORATED AND SHOULD NOT BE USED WITHOUT WRITTEN PERMISSION				

10 9 8 7 6 5 4 3 2 1



NOTES

- MATERIAL WAFER : G.F. 15% PBT (UL94V-0), COLOR---BLACK
PINS : BRASS, SIZE--- □0.635(.025 SQ.)
- MATES WITH MOLEX CONNECTOR SERIES OF 5320.
- LEGEND **5332 - N ***
BASE NUMBER _____
CIRCUIT SIZE _____
PLATING CODE OF PIN _____

	CODE:*	△ MARK COLOR	CONTACT AREA	SOLDER AREA	UNDER PLATE
LEAD-FREE	GS3	BLUE	GOLD 0.25 μm(.00001) MIN.	TIN-LEAD 3 μm(.00012) MIN.	
LEAD-FREE	GS17F	YELLOW	GOLD 0.1 μm(.000004) MIN.	TIN 1 μm(.00004) MIN.	NICKEL 1 μm(.00004) MIN.
LEAD-FREE	GS37F	BLUE	GOLD 0.25 μm(.00001) MIN.	TIN 1 μm(.00004) MIN.	
LEAD-FREE	T2	BLACK	TIN 1 μm(.00004) MIN.		NICKEL 0.5 μm(.00002) MIN.

SECT. E-E
(SCALE 3-1)

60	73.66 (2.900)	81.26 (3.200)	83.16 (3.274)	63.50 (2.500)
50	60.96 (2.400)	68.56 (2.700)	70.46 (2.774)	50.80 (2.000)
40	48.26 (1.900)	55.86 (2.200)	57.76 (2.274)	38.10 (1.500)
36	43.18 (1.700)	50.78 (2.000)	52.68 (2.074)	33.02 (1.300)
34	40.64 (1.600)	48.24 (1.900)	50.14 (1.974)	30.48 (1.200)
30	35.56 (1.400)	43.16 (1.700)	45.06 (1.774)	25.40 (1.000)
26	30.48 (1.200)	38.08 (1.500)	39.98 (1.574)	—
20	22.86 (.900)	30.46 (1.200)	32.36 (1.274)	—
16	17.78 (.700)	25.38 (1.000)	27.28 (1.074)	—
14	15.24 (.600)	22.84 (.900)	24.74 (.974)	—
10	10.16 (.400)	17.76 (.700)	19.66 (.774)	—

REVISED EC NO. J2012-0302 DRAWN: HIRAMOTO CHKD: INITSU APPR: YAGI 2011/08/31 2011/08/31 2011/09/07	GENERAL TOLERANCES (UNLESS SPECIFIED)	DIMENSION STYLE MM/IN	SCALE 2:1	DESIGN UNITS METRIC	THIRD ANGLE PROJECTION	
	10 UNDER ± 0.2 10 OVER 30 UNDER ± 0.25 30 OVER ± 0.3	DRAWN BY H. HIRAMOTO DATE 1989/07/18	CHECKED BY M. SASAO DATE	TITLE QIK FLECS WAFER ASSY ST ENGLISH ONLY		
	ANGULAR ± 3 ° DRAFT WHERE APPLICABLE MUST REMAIN WITHIN DIMENSIONS	APPROVED BY H. IKESUGI DATE	MATERIAL NO. SEE SHEET 2 OF 2	MOLEX INCORPORATED	DOCUMENT NO. SD-5332-003	
		SIZE A3	THIS DRAWING CONTAINS INFORMATION THAT IS PROPRIETARY TO MOLEX INCORPORATED AND SHOULD NOT BE USED WITHOUT WRITTEN PERMISSION			SHEET NO. 1 OF 2

ib_frame_A3_1_ME_S
Rev. D 2004/04/02

EN-02JA(021)

10 9 8 7 6 5 4 3 2 1

39-53-6266	5332-26GS37F	39-28-5261	5332-26T2	26
→	→	↓ 5201	↓ -20T2	20
→	→	39-28-5141	5332-14T2	14
EPD NO.	ENG. NO.	EPD NO.	ENG. NO.	CKT. SIZE.
5332-NGS37F	-LEAD FREE-	5332-NT2	-LEAD FREE-	
39-53-6364	5332-36GS17F	→	→	36
↑ -6344	↑ -34GS17F	→	→	34
↑ -6264	↑ -26GS17F	39-26-7267	5332-26GS3	26
↑ -6204	↑ -20GS17F	→	→	20
↓ -6144	↓ -14GS17F	→	→	14
39-53-6104	5332-10GS17F	→	→	10
EPD NO.	ENG. NO.	EPD NO.	ENG. NO.	CKT. SIZE.
5332-NGS17F	-LEAD FREE-	5332-NGS3		

REVISED EC NO. J2012-0302 DRAWN: HIRAMOTO 2011/08/31 CHECKED: IIMITSU 2011/08/31 APPROVED: IYAGI 2011/09/07	GENERAL TOLERANCES (UNLESS SPECIFIED)		DIMENSION STYLE MM/IN	SCALE 2:1	DESIGN UNITS METRIC	THIRD ANGLE PROJECTION
	10 UNDER	± 0.2	DRAWN BY H. HIRAMOTO	DATE 1989/07/18	TITLE QIK FLECS WAFER ASSY ST ENGLISH ONLY	
	10 OVER 30 UNDER	± 0.25	CHECKED BY M. SASAO	DATE	MOLEX INCORPORATED	
	30 OVER	± 0.3	APPROVED BY H. IKESUGI	DATE	DOCUMENT NO. SD-5332-003	SHEET NO. 2 OF 2
	ANGULAR ± 3 °		MATERIAL NO. SEE CHART		THIS DRAWING CONTAINS INFORMATION THAT IS PROPRIETARY TO MOLEX INCORPORATED AND SHOULD NOT BE USED WITHOUT WRITTEN PERMISSION	
DRAFT WHERE APPLICABLE MUST REMAIN WITHIN DIMENSIONS						

9 8 7 6 5 4 3 2 1 EN-02JA(021)