

Excellent Integrated System Limited

Stocking Distributor

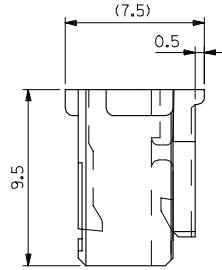
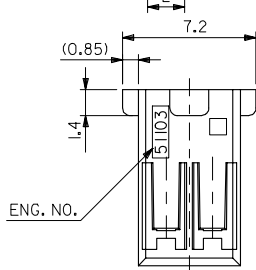
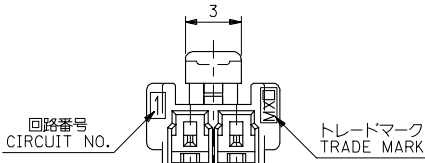
Click to view price, real time Inventory, Delivery & Lifecycle Information:

[Molex Connector Corporation](#)
[0511030800](#)

For any questions, you can email us directly:

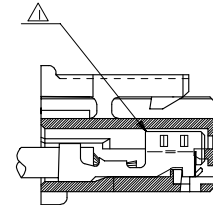
sales@integrated-circuit.com

10 9 8 7 6 5 4 3 2 1

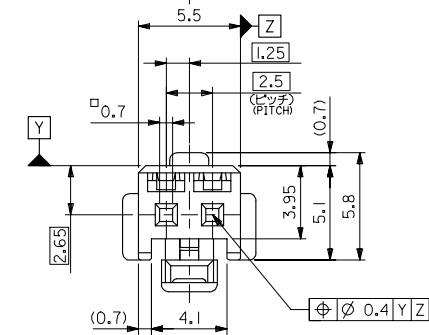


注記 NOTES

1. 適合ターミナル : 50351-8*00
APPLICABLE TERMINAL : 50351-8*00
2. 嵌合相手 : 53375,53426 シリーズ
MATE WITH : 53375,53426 SERIES
3. 偶数極の製品に適用。
APPLY EVEN CIRCUIT PRODUCTS.
4. 製品型番の下1桁は色を表す。
LAST DIGIT OF PART NUMBER INDICATES COLOR.
0 : 白 WHITE 1 : 黒 BLACK 2 : 赤 RED
3 : 黄 YELLOW 4 : 青 BLUE



ターミナル装着状態図
TERMINAL ASSEMBLY DRAWING



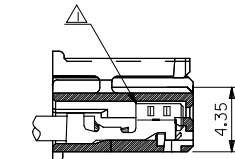
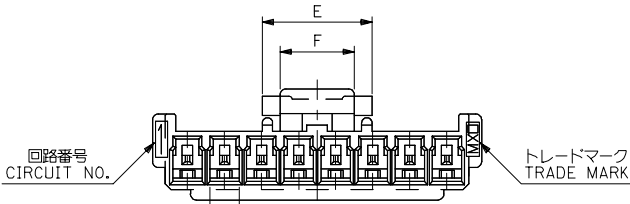
2極に適用
FOR 2 CKTS.

51103-020*	2
MATERIAL NO.	CIRCUIT
◎	THIRD ANGLE PROJECTION

RELEASED EC NO: J2005-2009 DRAWN BY: M.UMEDA CHKD BY: K.TOYODA APP: NUKITA REV: 0	GENERAL TOLERANCES (UNLESS SPECIFIED)		DIMENSION STYLE MM ONLY	SCALE ---	DESIGN UNITS METRIC	2.5 W/B CONN. HOUSING (POSITIVE LOCK)
	10 UNDER	± 0.2	DRAWN BY M.UMEDA	DATE 2005/01/14	TITLE	
	10 OVER 30 UNDER	± 0.25	CHECKED BY K.TOYODA	DATE 2005/01/14		
	30 OVER	± 0.3	APPROVED BY N.UKITA	DATE 2005/01/14		
	ANGULAR	± 3 °	MATERIAL NO.	DOCUMENT NO.	MOLEX INCORPORATED SD-51103-021	
	DRAFT WHERE APPLICABLE MUST REMAIN WITHIN DIMENSIONS		SEE CHART		SHEET NO. 1 OF 2	
SIZE A3 THIS DRAWING CONTAINS INFORMATION THAT IS PROPRIETARY TO MOLEX INCORPORATED AND SHOULD NOT BE USED WITHOUT WRITTEN PERMISSION						

10 9 8 7 6 5 4 3 2 1

F
E
D
C
B
A

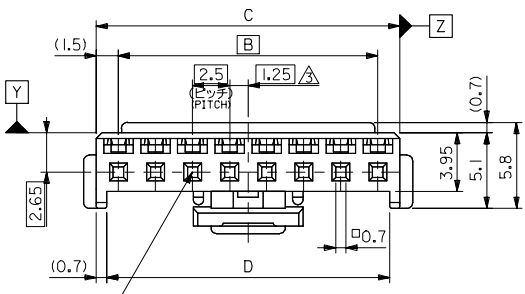
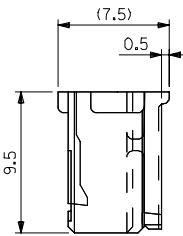
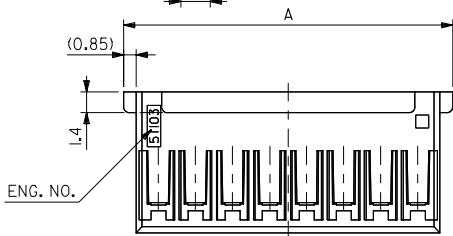


ターミナル装着状態図
TERMINAL ASSEMBLY DRAWING

注記 NOTES

- △ 適合ターミナル: 50351-8*00
APPLICABLE TERMINAL: 50351-8*00
2. 嵌合相手: 53375,53426 シリーズ
MATE WITH: 53375,53426 SERIES
- △ 偶数極の製品に適用。
APPLY EVEN CIRCUIT PRODUCTS.
4. 製品型番の下1桁は色を表す。
LAST DIGIT OF PART NUMBER INDICATES COLOR.
0:白 WHITE 1:黒 BLACK 2:赤 RED
3:黄 YELLOW 4:青 BLUE

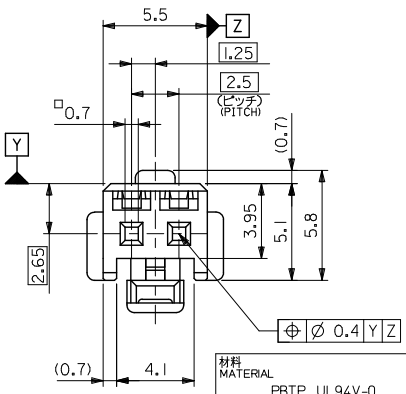
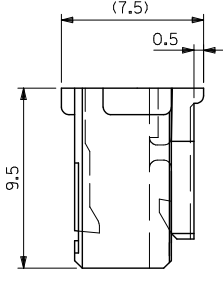
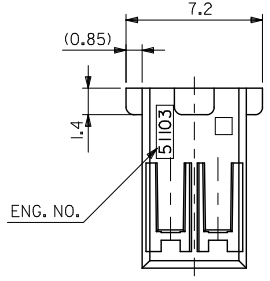
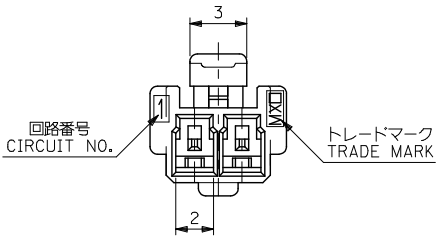
3-15 極に適用
FOR 3-15 CKTS.



5	7.4	36.6	38	35	39.7	51103-150*	15
↑	↑	34.1	35.5	32.5	37.2	↑ -140*	14
		31.6	33	30	34.7	↑ -130*	13
		29.1	30.5	27.5	32.2	↑ -120*	12
		26.6	28	25	29.7	↑ -110*	11
		24.1	25.5	22.5	27.2	↑ -100*	10
		21.6	23	20	24.7	↑ -090*	9
		19.1	20.5	17.5	22.2	↑ -080*	8
		16.6	18	15	19.7	↑ -070*	7
		14.1	15.5	12.5	17.2	↑ -060*	6
		11.6	13	10	14.7	↑ -050*	5
5	7.4	9.1	10.5	7.5	12.2	↓ -040*	4
3	5	6.6	8	5	9.7	↓ -030*	3
F	E	D	C	B	A	51103-030*	3
						MATERIAL NO.	CIRCUIT

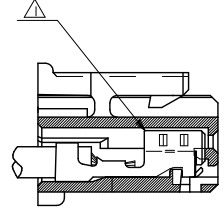
RELEASED EC NO: J2005-2009 DRAWN BY: M.UMEDA CHECKED BY: CHIKAKIYOYODA APPROVED BY: N. UKITA DATE: 2005/02/02 DATE: 2005/02/04 DATE: 2005/02/14	GENERAL TOLERANCES (UNLESS SPECIFIED)		DIMENSION STYLE MM ONLY		SCALE ---	DESIGN UNITS METRIC	THIRD ANGLE PROJECTION
	10 UNDER	± 0.2	DRAWN BY DATE M.UMEDA 2005/01/14		TITLE 2.5 W/B CONN. HOUSING (POSITIVE LOCK)		
	10 OVER 30 UNDER	± 0.25	CHECKED BY DATE KTOYODA 2005/01/14		MATERIAL NO. SD-51103-021		
	30 OVER	± 0.3	APPROVED BY DATE N. UKITA 2005/01/14		SHEET NO. 2 OF 2		
	ANGULAR ± 3 °		MATERIAL NO. SEE CHART		DOCUMENT NO. SD-51103-021		
DRAFT WHERE APPLICABLE MUST REMAIN WITHIN DIMENSIONS		THIS DRAWING CONTAINS INFORMATION THAT IS PROPRIETARY TO MOLEX INCORPORATED AND SHOULD NOT BE USED WITHOUT WRITTEN PERMISSION					

10 9 8 7 6 5 4 3 2 1



注記 NOTES

- △ 適合ターミナル: 50351-8*00
APPLICABLE TERMINAL: 50351-8*00
- 2. 嵌合相手: 53375,53426 シリーズ
MATE WITH: 53375,53426 SERIES



ターミナル装着状態図
TERMINAL ASSEMBLY DRAWING

2極に適用
FOR 2 CKTS.

材料 MATERIAL	PBTP, UL94V-0 (白色 WHITE)
仕上げ FINISH	—
適用電線範囲 WIRE RANGE	—
被覆外径 INS. RANGE	—

REVISED REV. NO. J2005-3799 DRAWN BY: 2005/06/20 CHKD BY: 2005/06/21 APPR. BY: 2005/06/27	DESCRIPTION	GENERAL TOLERANCES (UNLESS SPECIFIED)	DIMENSION STYLE	SCALE	DESIGN UNITS	51103-0200	2
		10 UNDER ±0.2 10 OVER 30 UNDER ±0.25 30 OVER ±0.3	MM ONLY	5:1	METRIC	MATERIAL NO.	NO. OF CKTS.
		ANGULAR ±3°	DRAWN BY: T. ITO DATE: '92/05/06	TITLE		THIRD ANGLE PROJECTION	
		DRAFT WHERE APPLICABLE MUST REMAIN WITHIN DIMENSIONS	CHECKED BY: H. HIRAMOTO DATE: '95/10/03	2.5 WIRE TO BOARD CONN HOUSING (POSITIVE LOCK)			
			APPROVED BY: M. FUKUSHIMA DATE: '95/10/03	MOLEX INCORPORATED			
			MATERIAL NO.	SEE CHART	DOCUMENT NO.	SHEET NO.	
			SIZE: A3	THIS DRAWING CONTAINS INFORMATION THAT IS PROPRIETARY TO MOLEX INCORPORATED AND SHOULD NOT BE USED WITHOUT WRITTEN PERMISSION		2 OF 2	
					SD-51103-023	EN-02JA(021)	