

Excellent Integrated System Limited

Stocking Distributor

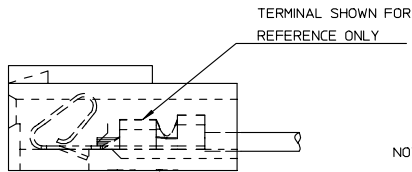
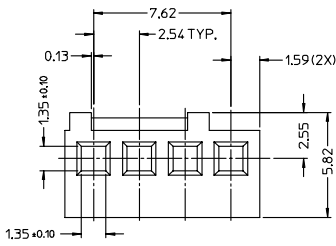
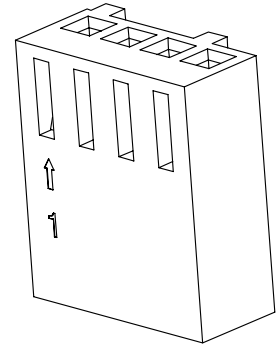
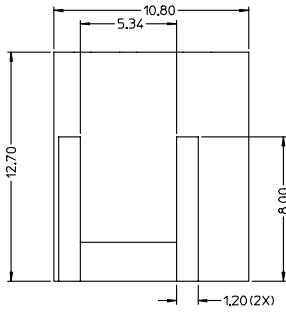
Click to view price, real time Inventory, Delivery & Lifecycle Information:

[Molex Connector Corporation](#)
[0470541000](#)

For any questions, you can email us directly:

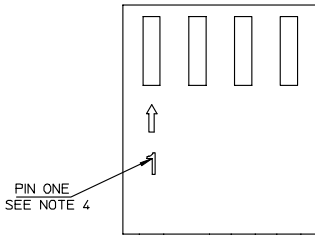
sales@integrated-circuit.com

47054



NOTES:

1. MATERIAL: NYLON, UL94V-0, COLOR: IVORY.
2. HOUSING TO BE USED WITH CRIMP TYPE TERMINAL NO.2759,22-30 GAUGE WIRE WITH 1.57 DIA. MAXIMUM WIRE INSULATION.
3. THIS HOUSING CONFORMS TO MOLEX PRODUCT SPEC. NO. PS-47053-001.
4. CIRCUIT NO. "1" TO APPEAR ON PARTS.



NEW PART	EC NO.	2004/04/28	QUALITY SYMBOLS	GENERAL TOLERANCES (UNLESS SPECIFIED)		SCALE	DESIGN UNITS	THIRD ANGLE PROJECTION	REVISE ON CAD ONLY		
	DRAWN BY	2004/06/04				1:1	METRIC				
	CHKD BY	2004/06/04		mm	INCH	DIMENSION STYLE MM ONLY		TITLE 4 PIN HOUSING FOR CRIMP TERMINALS			
	APPR. BY	2004/06/04		4 PLACES ± --- ± ---	3 PLACES ± --- ± ---						
REV	A	DESCRIPTION	2 PLACES ± 0.13 ± ---	1 PLACE ± 0.25 ± ---	DRAWN BY	DATE	MOLEX INCORPORATED				
			ANGULAR ± 3 °		RZHANG	2003/10/31			MATERIAL NO.	DOCUMENT NO.	SHEET NO.
DRAFT WHERE APPLICABLE MUST REMAIN WITHIN DIMENSIONS						APPROVED BY	DATE	47054-1000		SD-47054-001	1 OF 1
						THIS DRAWING CONTAINS INFORMATION THAT IS PROPRIETARY TO MOLEX INCORPORATED AND SHOULD NOT BE USED WITHOUT WRITTEN PERMISSION					