

Excellent Integrated System Limited

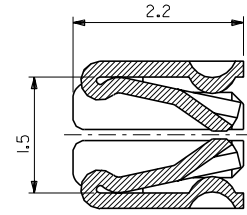
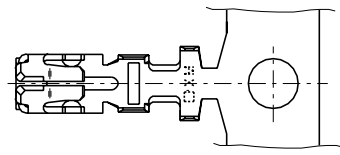
Stocking Distributor

Click to view price, real time Inventory, Delivery & Lifecycle Information:

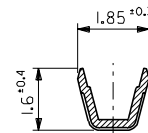
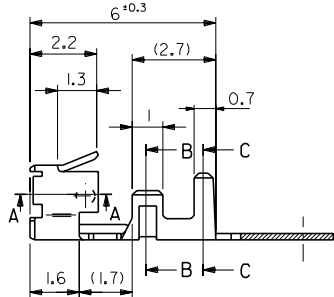
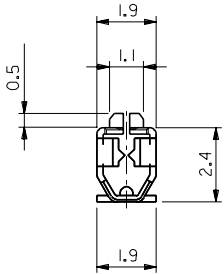
[Molex Connector Corporation](#)
[0039000031](#)

For any questions, you can email us directly:
sales@integrated-circuit.com

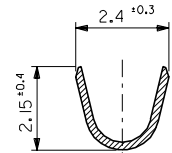
DWG. NO. SD-5479PBT*
F
D
C
B
A
DIMENSIONS IN METRIC DO NOT SCALE DRAWING



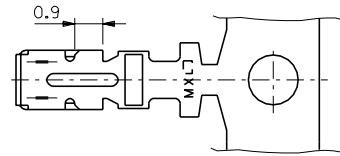
SECT. A-A
(SCALE 20:1)



SECT. B-B
(SCALE 10:1)



SECT. C-C
(SCALE 10:1)



注記
NOTES

1. 適用ハウジング : 5480-N シリーズ
APPLICABLE HOUSING : 5480-N SERIES

バラ状 LOOSE	39-00-0031	5479PBTL
連鎖状 CHAIN	39-00-0023	5479PBT
端子形状 FORM	EDP NO.	ENG. NO.

材料 MATERIAL リン青銅, 錫メッキ t=0.2 TIN PLATED PHOSPHOR BRONZE	仕上げ FINISH —	適用電線範囲 AWG #22-#28 WIRE RANGE 0.33-0.08 mm ²	被覆外径 INS. RANGE φ 1.8MAX	DRAWN BY '98/5/6 Y.KANNO	CHK'D BY '98/7/7 K.T.S.KUNISHI	REVISE ONLY ON CAD SYSTEM	TITLE 名称 2.5 LOW PROFILE CRIMP RECEPTACLE	DWG. NO. SD-5479PBT*	REV G
角度 ANGLE	+3°								
30 以上 OVER	+0.3								
10 以上 OVER 30 未満 UNDER	+0.25	G 変更 REVISED	JC900(2)	Y.K	98/1/6				
10 未満 UNDER	+0.2	F 変更及び再作図 REVISED & REDRAWN	JC806(19)	Y.K	98/5/6				
一般公差 GENERAL TOLERANCES		記号 LTR	変更内容 REVISION RECORD	DR CHK	日付 DATE				

THIS DRAWING CONTAINS INFORMATION THAT IS PROPRIETARY TO MOLEX(JAPAN) AND SHOULD NOT BE USED WITHOUT WRITTEN PERMISSION
本図面は日本モレックス(株)の所有する情報を含むもので 当社の許可なく複製を禁止する。
EN-01C(032)MXJ-32

8 7 6 5 4 3 2 1