

## Excellent Integrated System Limited

Stocking Distributor

Click to view price, real time Inventory, Delivery & Lifecycle Information:

[Molex Connector Corporation](#)  
[0050160281](#)

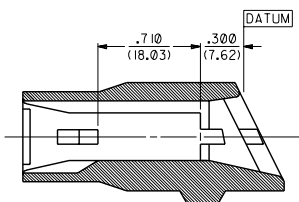
For any questions, you can email us directly:

[sales@integrated-circuit.com](mailto:sales@integrated-circuit.com)

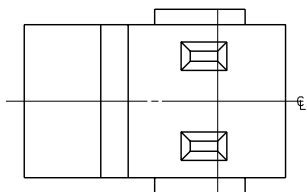
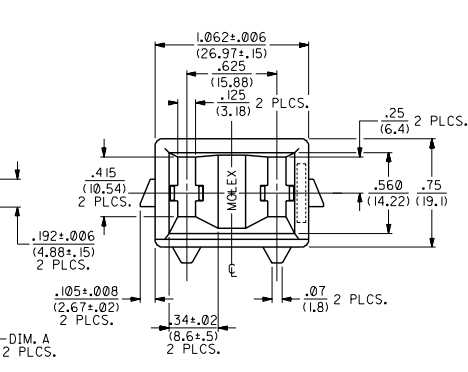
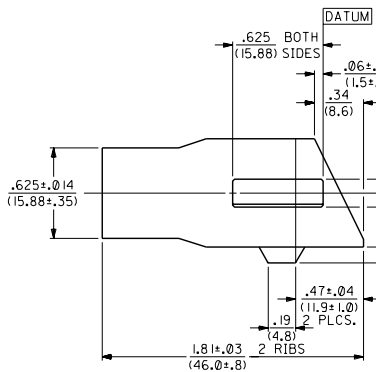
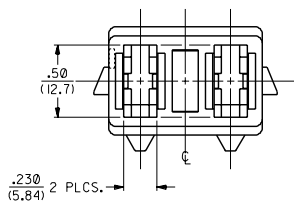
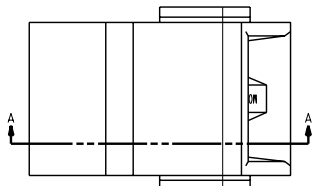
PART NO.	ENG. NO.	DIMENSION A	
050-16-0281	2481	.110 (2.79)	
050-16-0282	2481-15	.075 (1.91)	OBSOLETE

NOTES:

1. THIS HOUSING IS FOR USE WITH THE 6482 TYPE TERMINALS AND ASSEMBLES TO THE 2589-• MOUNTING CLIPS.



SECTION A-A  
TYPICAL CORE



MATERIAL:

PHENOLIC, MINERAL FILLED, 94V-0,  
COLOR: BLACK.  
PLENCO#4002  
(REF.: SMES-128E-6)

AC	OBSOLETE P/N UGR2002-0255 01/9/13 COMMERCIAL
AB	REVISED EON US 1011 04/06/95 RHR
AA	REDRAWN & REVISED EON US 0525 11/29/94 RHR

DIMENSIONS SHOWN IN METRIC INCH UNLESS OTHERWISE SPECIFIED TOLERANCES ANGULAR ± .50°*		REVISIONS	
3 PLACE ± .010	---	MFG. SH.	REV. LTR.
2 PLACE ± .014	± 0.25	REVISE ONLY ON CAD SYSTEM	
1 PLACE ---	± 0.35	HOUSING, RECEPTACLE, 2 CIRCUIT	
DRAFT ANGLES APPLICABLE MUST REMAIN WITHIN DIMENSIONS		MOLEX INCORPORATED SHEET NO. DATE 1 of 1 10/04/94	
DRG. OF: RHR CHG. BY: WRL		PART NO. DRG. NO.	
APP'D: WRL SCALE 2: 1		SEE CHART SD-2481-*	
FILE NAME: SD2481R1.DGN		DO NOT CHANGE CONTENTS INFORMATION THIS IS PROPRIETARY TO MOLEX INC. AND SHOULD NOT BE LOANED WITHOUT WRITTEN PERMISSION.	
NO P.S.		CP C	