

Excellent Integrated System Limited

Stocking Distributor

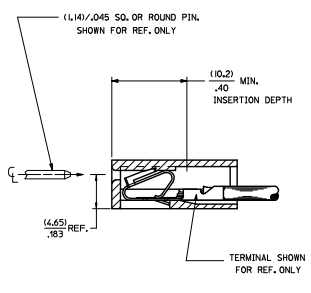
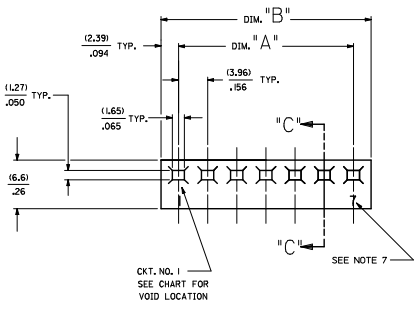
Click to view price, real time Inventory, Delivery & Lifecycle Information:

[Molex Connector Corporation](#)
[0026034020](#)

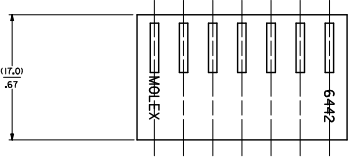
For any questions, you can email us directly:

sales@integrated-circuit.com

20 19 18 17 16 15 14 13 12 11 10 9 8 7 6 5 4 3 2 1



NO. OF CKT'S:	DIM. A	DIM. B
1	-----	(4.78±.18)
2	(3.96±.13)	(.188±.007)
3	(.56±.005)	(.344±.007)
4	(.792±.13)	(.1270±.18)
5	(.32±.005)	(.500±.007)
6	(.468±.005)	(.1665±.18)
7	(.585±.13)	(.2062±.18)
8	(.624±.005)	(.812±.007)
9	(.780±.005)	(.2459±.18)
10	(.2377±.13)	(.2855±.18)
11	(.296±.005)	(.124±.007)
12	(.2774±.25)	(.3251±.30)
13	(.1092±.010)	(.1780±.012)
14	(.3110±.25)	(.3547±.30)
15	(.248±.010)	(.1436±.012)
16	(.3566±.25)	(.4044±.30)
17	(.1404±.010)	(.1592±.012)
18	(.1785±.30)	(.4440±.30)
19	(.1560±.010)	(.1748±.012)
20	(.1716±.010)	(.1904±.012)
21	(.1872±.012)	(.2060±.014)
22	(.1511±.36)	(.5629±.41)
23	(.2028±.014)	(.2216±.016)
24	(.5847±.36)	(.6025±.41)
25	(.218±.014)	(.2372±.016)
26	(.5944±.36)	(.6421±.41)
27	(.2340±.014)	(.2528±.016)
28	(.6340±.36)	(.6817±.41)
29	(.2496±.014)	(.2684±.016)
30	(.6736±.36)	(.7214±.41)
31	(.2652±.014)	(.2840±.016)
32	(.7132±.36)	(.7610±.41)
33	(.2808±.014)	(.2996±.016)
34	(.7529±.46)	(.8006±.51)
35	(.2964±.018)	(.3151±.020)
36	(.7925±.46)	(.8402±.51)
37	(.3120±.018)	(.3309±.020)
38	(.8321±.46)	(.8759±.51)
39	(.3276±.018)	(.3464±.020)
40	(.8717±.46)	(.9155±.51)
41	(.3432±.018)	(.3620±.020)
42	(.9114±.46)	(.9515±.51)
43	(.3588±.018)	(.3776±.020)



- NOTES:
1. MATERIAL A: NYLON 6/6 UL94V-2, COLOR: NATURAL
 2. FINISH: N/A
 3. THIS PART COMPLIES WITH PRODUCT SPECIFICATION PS-40-02.
 4. PACKAGING SPECIFICATIONS PK-6442-001
 5. HOUSING SHOWN ABOVE IS STANDARD HOUSING WITH NO OPTIONS.
 6. THIS HOUSING FOR USE WITH TERMINAL NO. 45570-*, 18-20 GAJ WITH (3.32)/.123 MAX. INSULATION DIA. 6838-*, 18-24 GAJ WITH (2.79)/.110 MAX. INSULATION DIA. 7258-*, (22-26 GAJ) WITH (1.65)/.065 MAX. INSULATION DIA.
 7. LAST CIRCUIT ID. NOT PRESENT ON 2-3 CIRCUIT HOUSINGS AND MAY OR MAY NOT BE PRESENT ON 4 CIRCUIT HOUSINGS AND LARGER.
 8. THIS PART CONFORMS TO CLASS B REQUIREMENTS OF COSMETIC SPECIFICATION PS-45499-002.
 9. SEE SHEET 2 FOR OPTIONS.

6442- * N * * * *

CODE	HOOKS	SIDE HOOKS	RAMP
BLANK	NONE	NONE	NONE
A	NONE	YES	NONE
R	NONE	NONE	FRICTION
B	NONE	NONE	TYPE B
C	NONE	NONE	TYPE C

VOLTAGE RATING OPTION
BLANK=NONE
V = *250 VAC* ON HOUSING

MAT'L. OPTION
BLANK= MATERIAL A (SEE NOTE 1)

MOLDED VOID CODE
Z=NO VOIDS
A=CKT. 1 VOID,
B=CKT. 2 VOID, ETC.
5=1ST MULTIPLE VOID,
52=2ND MULTIPLE VOID, ETC.

NO. OF CKT'S.

QUALITY SYMBOLS	GENERAL TOLERANCES (UNLESS SPECIFIED)	DIMENSION STYLE	SCALE	DESIGN UNITS	THIRD ANGLE PROJECTION
∇=0	4 PLACES ±.010	MM/INCH	---	INCH	THIRD ANGLE PROJECTION
∇=0	3 PLACES ±.010				
∇=0	2 PLACES ±0.25 ±.014				
∇=0	1 PLACE ±0.36				
∇=0	0 PLACE ±				

REVISION NOTE 7
EC MOLLEP/2005-4588
DRAWN/MLP/2005/05/04
CHECKED/MLP/2005/05/04
APPROVED/MLP/2005/05/04

QUALITY SYMBOLS: ∇=0

GENERAL TOLERANCES (UNLESS SPECIFIED):
4 PLACES ±.010
3 PLACES ±.010
2 PLACES ±0.25 ±.014
1 PLACE ±0.36
0 PLACE ±

DIMENSION STYLE: MM/INCH

SCALE: ---

DESIGN UNITS: INCH

THIRD ANGLE PROJECTION

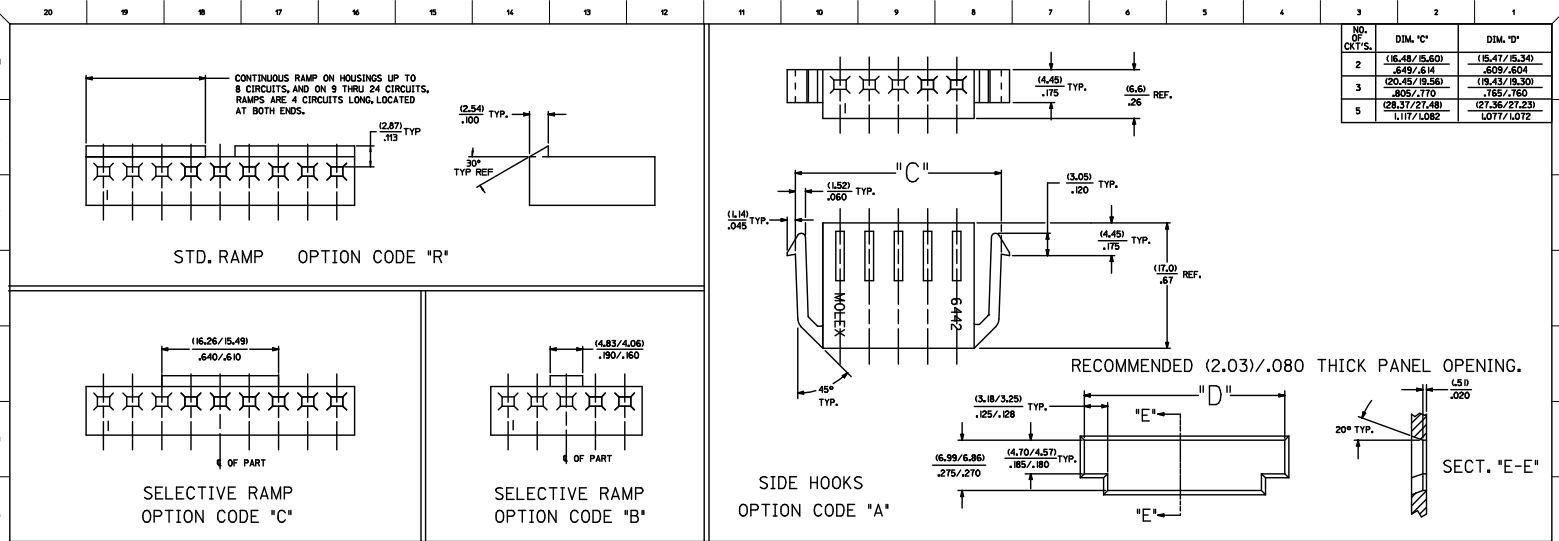
DRAWN BY: POLGAR DATE: 1986/12/03
CHECKED BY: PATEL DATE: 1986/12/03
APPROVED BY: LENZ DATE: 1986/12/03

MATERIAL NO.: SEE CHART

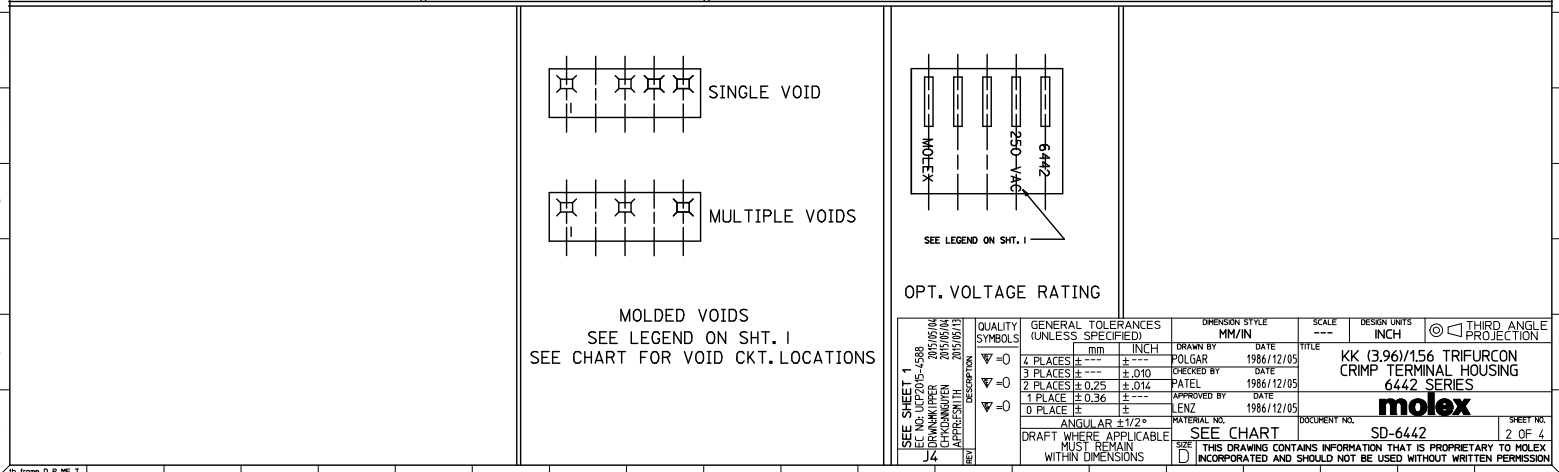
DOCUMENT NO.: SD-6442

SHEET NO.: 1 OF 4

INCORPORATED AND SHOULD NOT BE USED WITHOUT WRITTEN PERMISSION



NO. OF CRT'S.	DIM. "C"	DIM. "D"
2	(16.48/15.60)	(15.47/15.34)
	.649/.614	.609/.604
3	(20.45/19.56)	(19.43/19.30)
	.805/.770	.765/.760
5	(28.37/27.48)	(27.36/27.23)
	1.117/.1082	1.077/.1072



QUALITY SYMBOLS	GENERAL TOLERANCES (UNLESS SPECIFIED)		DIMENSION STYLE		SCALE	DESIGN UNITS	THIRD ANGLE PROJECTION
	mm	INCH	MM/IN	INCH			
∇=0	4 PLACES ±.010	±.010	DRAWN BY	DATE	---	INCH	⊙
∇=0	3 PLACES ±.025	±.014	POLGAR	1986/12/05			
∇=0	2 PLACES ±.036	±.014	CHECKED BY	DATE	TITLE		
∇=0	1 PLACE ±.036	±.014	PATEL	1986/12/05	KK (3.96)/156 TRIFURCON CRIMP TERMINAL HOUSING 6442 SERIES		
∇=0	0 PLACE ±.036	±.014	APPROVED BY	DATE	molex		
			LENZ	1986/12/05	DOCUMENT NO. SD-6442		
					SEE CHART		
					SHEET NO. 2 OF 4		

